

INNOVATIONS
MASTER CATALOG

TOOLING SYSTEMS
2013

www.kennametal.com



GENERAL ENGINEERING

TRANSPORTATION



AEROSPACE & DEFENSE

EARTHWORKS

ENERGY

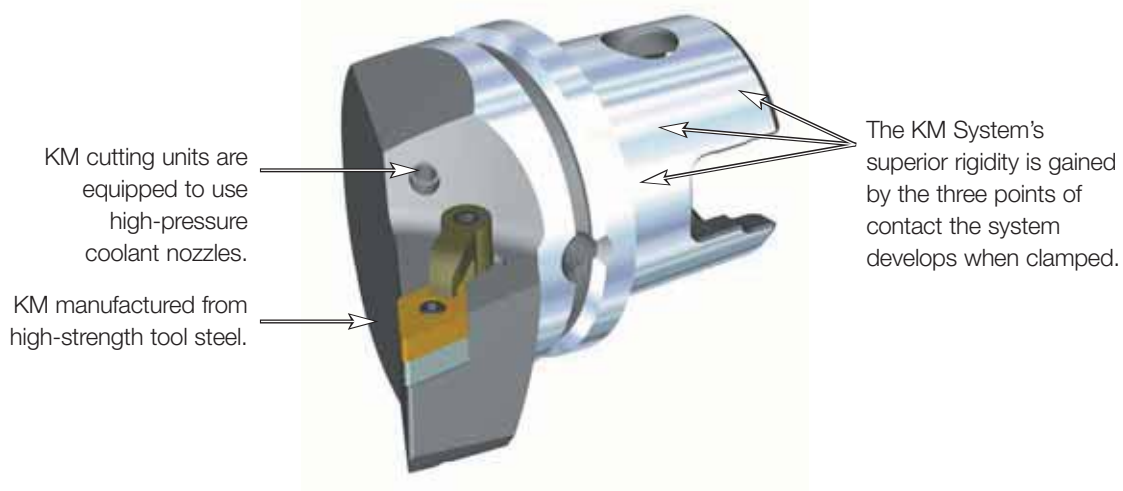
KM™ Quick Change Tooling System • KM63XMZ™ Series

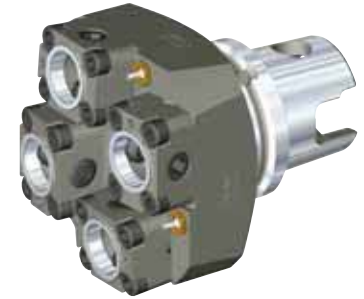
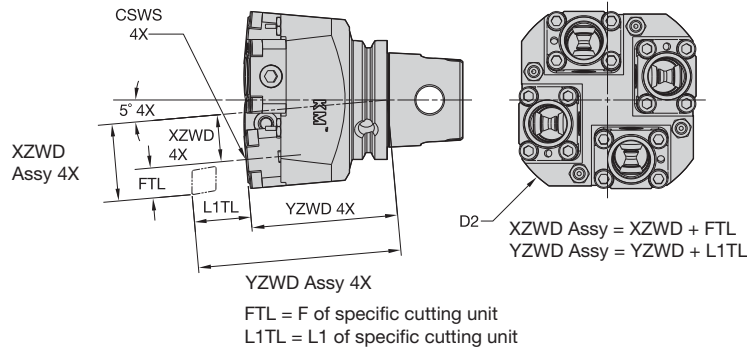
Primary Application

The KM Quick Change Clamping System is the best system on the market suitable for static, rotating, and multitasking operations. With its industry-leading design, the KM Quick Change System provides greater clamping forces than other quick-change systems. The KM Quick Change System gives you the flexibility to use KM on any application within your shop.

Features and Benefits

- KM63XMZ is designed to be used on Mazak® Mark IV Series and I- and J-Series INTEGREX® Machines.
- KM63XMZ is your solution for multitasking.





Left-Hand Tool

■ 4xSTAL • KM25

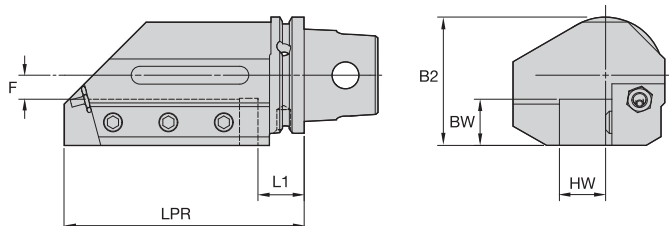
order number	catalog number	CSWS system size	XZWD		YZWD		Nm	kg	
			D2	mm	in	mm			in
2614687	KM63XMZ4XSTALFKM25Y	KM25	110	24	.945	80	3.150	34	3,11

■ Spare Parts



catalog number	nozzle	flange clamping unit	KM spare parts package
KM63XMZ4XSTALFKM25Y	PMT08420 COOLANT NOZZLE SPRAY	KM25NCMSF3140MST	KM25NRPKG

NOTE: For torque wrench, see pages L52–L53.



■ STA • Straight Side Mount • Metric



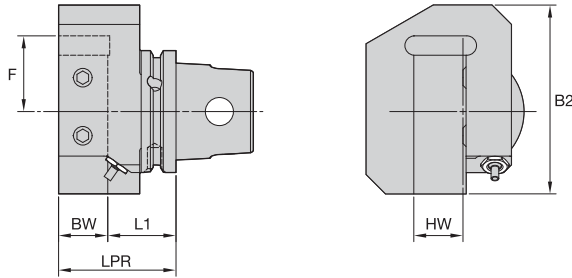
order number	catalog number	L1	LPR	F	HW	BW	B2	cup point socket set screw	nozzle	Nm	kg
1855652	KM63XMZSTALF2020Y	25	100	10	20	20	62	MS2049	PMT04526 COOLANT NOZZLE SPRAY	35	2,46
1506498	KM63XMZSTALF2525Y	25	130	13	25	25	70	MS1430	PMT04526 COOLANT NOZZLE SPRAY	55	3,54
1850241	KM63XMZSTAR2020Y	25	100	10	20	20	62	MS2049	PMT04526 COOLANT NOZZLE SPRAY	35	2,43
1514567	KM63XMZSTAR2525Y	25	130	13	25	25	70	MS1430	PMT04526 COOLANT NOZZLE SPRAY	55	3,58

■ STA • Straight Side Mount • Inch



order number	catalog number	L1	LPR	F	HW	BW	B2	cup point socket set screw	nozzle	ft. lbs.	lbs
1855684	KM63XMZSTALF12Y	.921	3.937	.378	.750	.750	2.421	MS2049	PMT04526 COOLANT NOZZLE SPRAY	26	5.38
1516687	KM63XMZSTALF16Y	.906	5.118	.522	1.000	1.000	2.762	MS1430	PMT04526 COOLANT NOZZLE SPRAY	40	7.83
1855683	KM63XMZSTAR12Y	.921	3.937	.378	.750	.750	2.421	MS2049	PMT04526 COOLANT NOZZLE SPRAY	26	5.32
1516683	KM63XMZSTAR16Y	.906	5.118	.522	1.000	1.000	2.762	MS1430	PMT04526 COOLANT NOZZLE SPRAY	40	7.92

NOTE: Do not overtighten clamp screw; use torque recommendations above.
Supplied with clamp screw.
Clamp screw wrench not included.



KM63XMZ Cutting Units



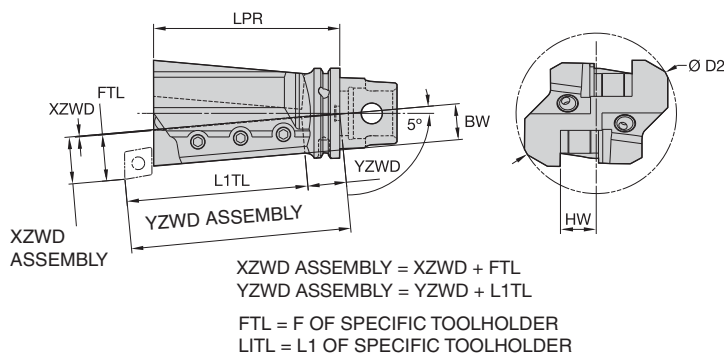
■ ETA • Straight End Mount • Inch

order number	catalog number	L1	LPR	F	HW	BW	B2	ft. lbs.	lbs
3103491	right hand KM63XMZETAR16Y	1.388	2.388	-1.539	1.000	1.000	3.839	40	4.97
3103492	left hand KM63XMZETALF16Y	1.388	2.388	-1.539	1.000	1.000	3.839	40	4.85

■ Spare Parts

catalog number	cup point socket set screw	nozzle
right hand KM63XMZETAR16Y	DWG 249618-23R05	PMT04526 COOLANT NOZZLE SPRAY
left hand KM63XMZETALF16Y	DWG 249618-23R05	PMT04526 COOLANT NOZZLE SPRAY

NOTE: Do not overtighten clamp screw; use torque recommendations above.
 Supplied with clamp screw.
 Clamp screw wrench not included.

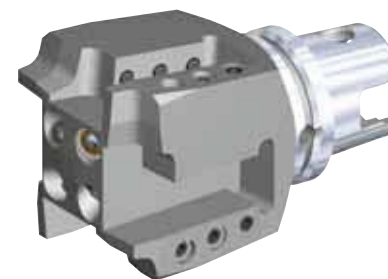
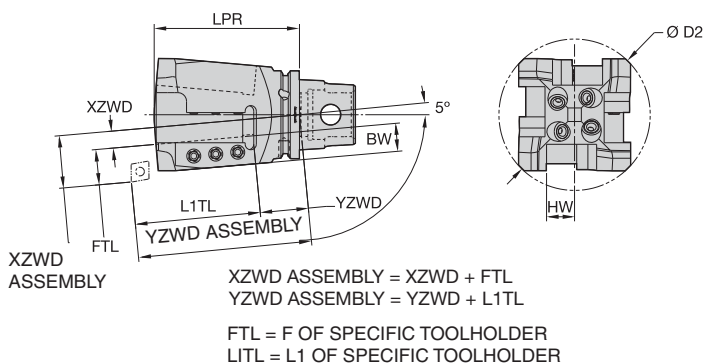


■ STA • 2x Straight Side Mount • Metric



order number	catalog number	D2	LPR	XZWD	YZWD	HW	BW	cup point socket set screw	Nm	nozzle	kg
1847363	right hand KM63XMZ2XSTAR2525Y	112	130	1	28	25	25	MS1430	55	PWZ1012	3,85
1868533	left hand KM63XMZ2XSTALF2525Y	112	130	1	28	25	25	MS1430	55	PWZ1012	3,85

NOTE: Do not overtighten clamp screw; use torque recommendations above.
Supplied with clamp screw.
Clamp screw wrench not included.

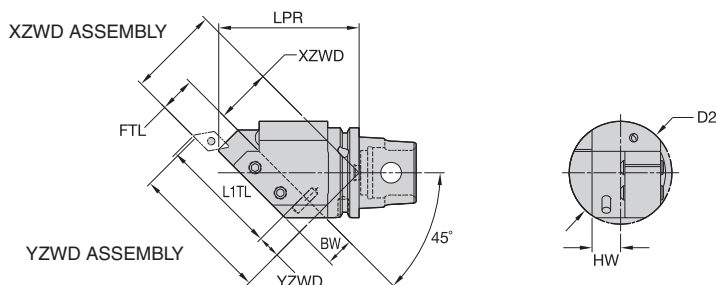


■ STA • 4x Straight Side Mount • Metric



order number	catalog number	D2	LPR	XZWD	YZWD	HW	BW	cup point socket set screw	Nm	nozzle	kg
1725301	KM63XMZ4XSTAR2020Y	108	104	12	34	20	20	121.830	18	PWZ1008	2,92

NOTE: Do not overtighten clamp screw; use torque recommendations above.
Supplied with clamp screw.
Clamp screw wrench not included.



XZWD ASSEMBLY = XZWD + FTL
 YZWD ASSEMBLY = YZWD + L1TL
 FTL = F OF SPECIFIC TOOLHOLDER
 L1TL = L1 OF SPECIFIC TOOLHOLDER



■ TA 45 • 45° Mount • Metric



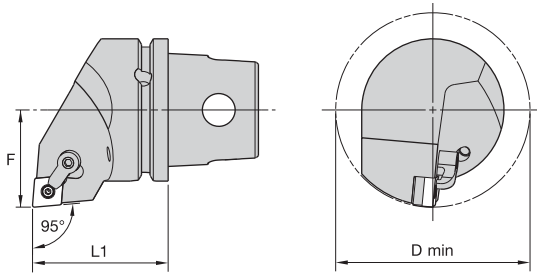
order number	catalog number	D2	LPR	XZWD	YZWD	HW	BW	cup point socket set screw	nozzle	Nm	kg
	right hand										
1855665	KM63XMZ45TAR2020Y	72	99	39	16	20	20	MS2049	PWZ1012	25	2,01
	left hand										
1855669	KM63XMZ45TALF2020Y	72	99	39	16	20	20	MS2049	PWZ1012	25	2,01

■ TA 45 • 45° Mount • Inch

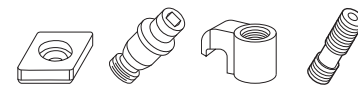


order number	catalog number	D2	LPR	XZWD	YZWD	HW	BW	cup point socket set screw	nozzle	ft. lbs.	lbs
	right hand										
1855685	KM63XMZ45TAR12Y	2.835	3.887	1.518	.451	.750	.750	MS2049	PWZ1012	18	4.38
	left hand										
1855686	KM63XMZ45TALF12Y	2.835	3.887	1.518	.451	.750	.750	MS2049	PWZ1012	18	4.38

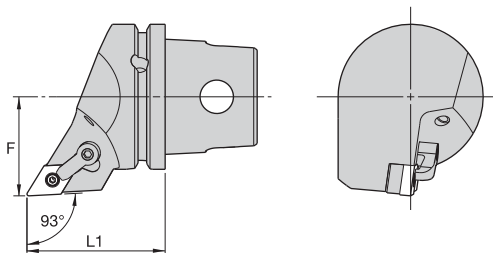
NOTE: Do not overtighten clamp screw; use torque recommendations above.
 Supplied with clamp screw.
 Clamp screw wrench not included.



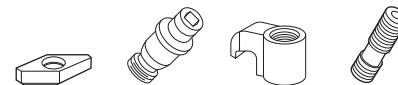
■ MCLN 95°



order number	catalog number	L1		F		D min		gage insert	shim	lock pin	clamp	clamp screw	kg	lbs
		mm	in	mm	in	mm	in							
	right hand													
1551813	KM63XMZMCLNR12Y	60	2.362	43	1.693	86	3.386	CN..120408/CN..432	ICSN432	KLM46	CKM20	STCM11	1,24	2.73
1603738	KM63XMZMCLNR16Y	60	2.362	43	1.693	86	3.386	CN..160612/CN..543	ICSN533	KLM58	CKM20	STCM11	1,24	2.74
	left hand													
3103485	KM63XMZMCLNLF12Y	60	2.362	43	1.693	86	3.386	CN..120408/CN..432	ICSN432	KLM46	CKM20	STCM11	1,24	2.73
3103486	KM63XMZMCLNLF16Y	60	2.362	43	1.693	86	3.386	CN..160612/CN..543	ICSN533	KLM58	CKM20	STCM11	1,24	2.74



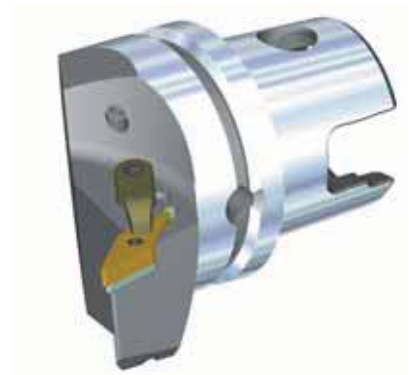
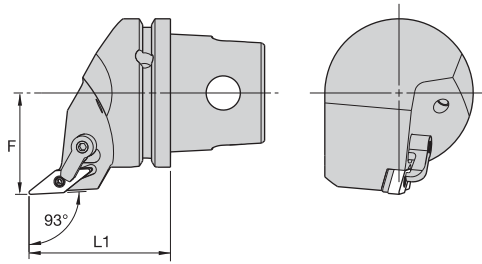
■ MDJN 93°



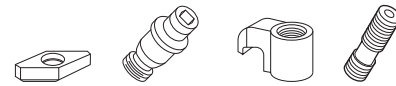
order number	catalog number	L1		F		gage insert	shim	lock pin	clamp	clamp screw	kg	lbs
		mm	in	mm	in							
	right hand											
3103487	KM63XMZMDJNR1504Y	60	2.362	43	1.693	DN..150408/DN..432	IDSN442	KLM46L	CKM23	STCM11	1,07	2.360
	left hand											
3103488	KM63XMZMDJNLF1504Y	60	2.362	43	1.693	DN..150408/DN..432	IDSN442	KLM46L	CKM23	STCM11	1,07	2.360



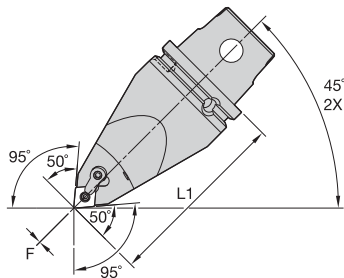
KM63XMZ Cutting Units



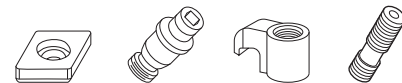
■ MVJN 93°



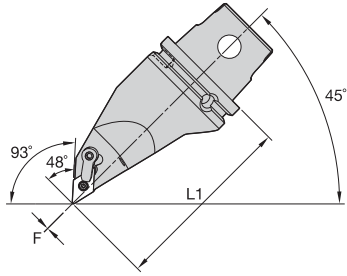
order number	catalog number	L1		F		gage insert	shim	lock pin	clamp	clamp screw	kg	lbs
		mm	in	mm	in							
		right hand										
3103489	KM63XMZMVJNR16Y	60	2.362	43	1.693	VN..160408/VN..332	IVSN322	KLM34L	CKM23	STCM11	1,05	2.32
		left hand										
3103490	KM63XMZMVJNLF16Y	60	2.362	43	1.693	VN..160408/VN..332	IVSN322	KLM34L	CKM23	STCM11	1,05	2.32



■ MCMN 50° • 95° Application • Centerline

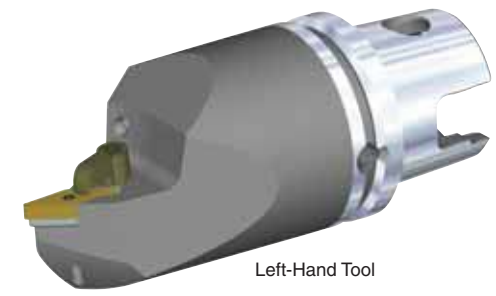
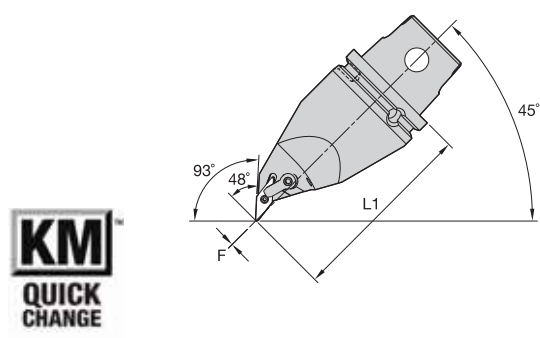
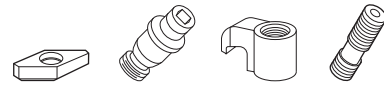


order number	catalog number	L1		F		gage insert	shim	lock pin	clamp	clamp screw	kg	lbs
		mm	in	mm	in							
3180556	KM63XMZMCMNNF12115Y	115	4.528	0	.000	CN..120408/CN..432	ICSN432	KLM46	CKM20	STCM11	2,07	4.57



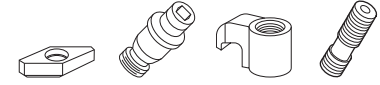
■ MDMN 48° • 93° Application • Centerline

order number	catalog number	L1		F		gage insert	shim	lock pin	clamp	clamp screw	kg	lbs
		mm	in	mm	in							
right hand												
3487461	KM63XMZMDMNR1504115Y	115	4.528	0	.000	DN..150408/DN..432	IDSN442	KLM46L	CKM23	STCM11	1,88	4.14
3487462	KM63XMZMDMNR1506115Y	115	4.528	0	.000	DN..150608/DN..442	IDSN432	KLM46L	CKM23	STCM11	1,88	4.13
left hand												
3487458	KM63XMZMDMNL1504115Y	115	4.528	0	.000	DN..150408/DN..432	IDSN442	KLM46L	CKM23	STCM11	1,87	4.11
3487459	KM63XMZMDMNL1506115Y	115	4.528	0	.000	DN..150608/DN..442	IDSN432	KLM46L	CKM23	STCM11	1,86	4.10



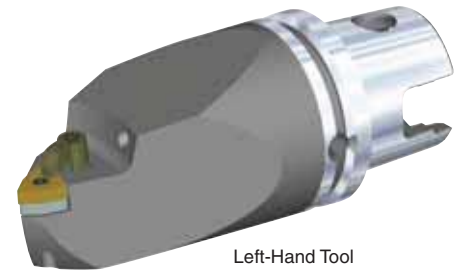
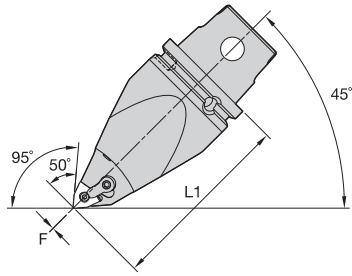
■ MVMN 48° • 93° Application • Centerline

order number	catalog number	L1		F		gage insert	shim	lock pin	clamp	clamp screw	kg	lbs
		mm	in	mm	in							
right hand												
3487473	KM63XMZMVMNR16115Y	115	4.528	0	.000	VN..160408/VN..332	IVSN322	KLM34L	CKM23	STCM11	1,97	4.35
left hand												
3487460	KM63XMZMVMNL16115Y	115	4.528	0	.000	VN..160408/VN..332	IVSN322	KLM34L	CKM23	STCM11	1,97	4.35

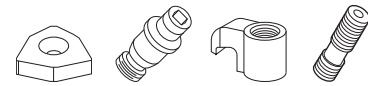




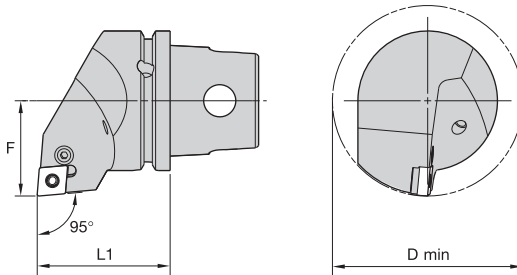
KM63XMZ Cutting Units



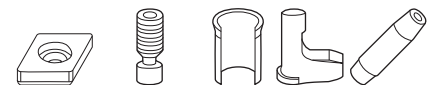
■ MWMN 50° • 95° Application • Centerline



order number	catalog number	L1		F		gage insert	shim	lock pin	clamp	clamp screw	kg	lbs
		mm	in	mm	in							
		right hand										
3487572	KM63XMZMWMNR08115Y	115	4.528	0	.000	WN..080408/WN..432	IWSN433	KLM46	CKM20	STCM11	2,03	4.47
		left hand										
3487571	KM63XMZMWMNLF08115Y	115	4.528	0	.000	WN..080408/WN..432	IWSN433	KLM46	CKM20	STCM11	2,02	4.46



■ PCLN 95°



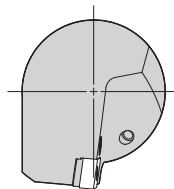
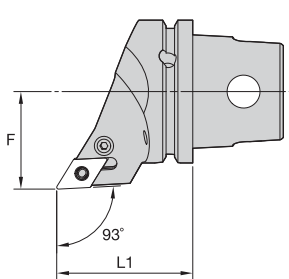
order number	catalog number	L1		F		D min		gage insert	shim	lever screw	shim pin	toggle lever	punch	kg	lbs
		mm	in	mm	in	mm	in								
		right hand													
2231263	KM63XMZPCLNR12Y	60	2.362	43	1.693	86	3.386	CN..120408/CN..432	512.112	514.023	513.023	511.023	515.018	1,23	2.71
		left hand													
2231264	KM63XMZPCLNLF12Y	60	2.362	43	1.693	86	3.386	CN..120408/CN..432	512.112	514.023	513.023	511.023	515.018	1,23	2.71

KM63XMZ™ Cutting Units

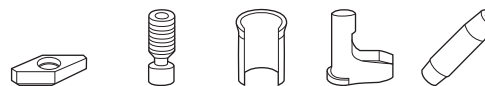
P-Clamping • S-Clamping



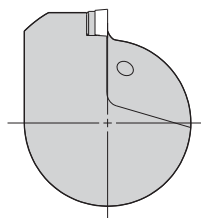
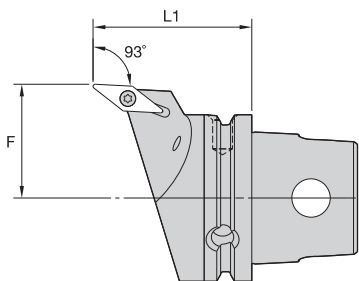
KM63XMZ Cutting Units



■ PDJN 93°



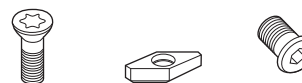
order number	catalog number	L1		F		gage insert	shim	lever screw	shim pin	toggle lever	punch	kg	lbs
		mm	in	mm	in								
2231265	KM63XMZPDJNR15Y	60	2.362	43	1.693	DN..150608/DN..442	512.153	514.028	513.023	511.024	515.018	1,04	2.29



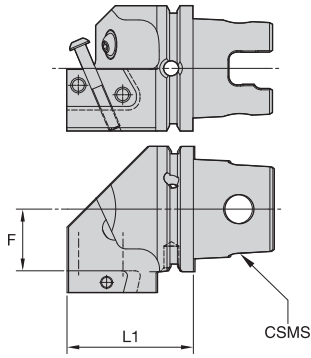
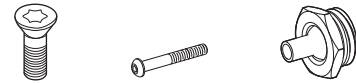
Left-Hand Tool



■ SVJB 93°

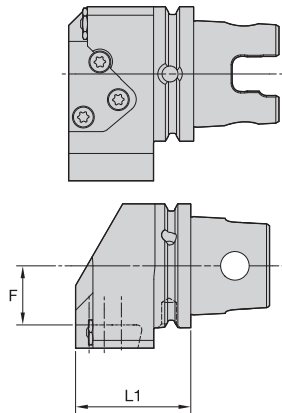


order number	catalog number	L1		F		gage insert	insert screw	shim	shim screw	kg	lbs
		mm	in	mm	in						
2231270	KM63XMZSVJBLF16Y	60	2.362	43	1.693	VB..160408/VB..332	MS1156	SKVN343	SRS3	1,07	2.35


KM63XMZ Cutting Units

■ KGMS • Side Mount


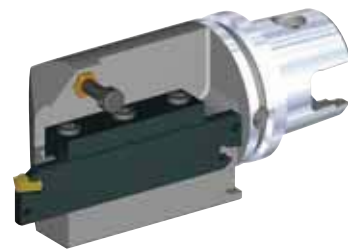
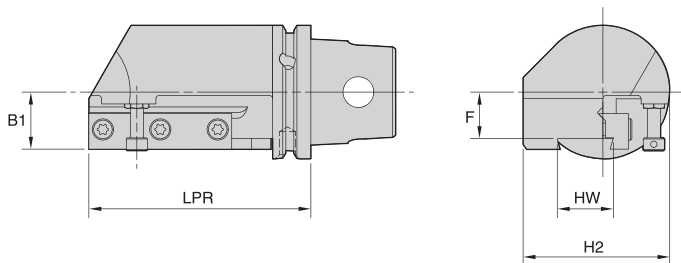
order number	catalog number	L1		F		cartridge size	blade screw	clamp screw	nozzle	kg
		mm	in	mm	in					
	right hand									
1756550	KM63XMZKGMSR50Y	63,5	2.500	31	1.220	50	MS1162	MS2002	SB09530PWZ1012	1,40
	left hand									
1756574	KM63XMZKGMSLF50Y	63,5	2.500	31	1.220	50	MS1162	MS2002	SB09530PWZ1012	1,40

NOTE: For A3/A4 modular blades, see the Kennametal Innovations Master Catalog Cutting Tools 2013.
 Right-hand cutting units use right-hand blades.


■ KGMS • Side Mount


order number	catalog number	L1		F		cartridge size	blade screw	nozzle	kg
		mm	in	mm	in				
	left hand								
3588680	KM63XMZKGMSLF65Y	58,5	2.303	30	1.181	65	MS1163	PMT04525	1,74

NOTE: For A3/A4 modular blades, see the Kennametal Innovations Master Catalog Cutting Tools 2013.
 Right-hand cutting units use right-hand blades.



■ BS • Side Mount

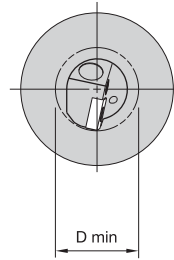
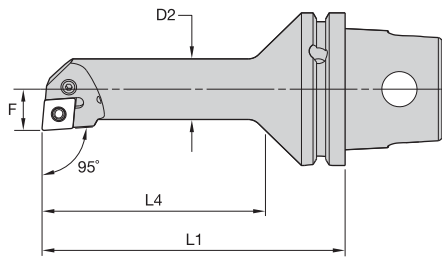


order number	catalog number	B1		LPR		F		H2		HW		cartridge size	cartridge 1	clamp	clamp screw	kg
		mm	in	mm	in	mm	in	mm	in	mm	in					
right hand																
1982386	KM63XMZBSR4Y	37,6	1.480	104,6	4.118	21,92	.863	69,1	2.720	26,0	1.024	26	A2BNSN26...	CGS4	MS1595	2,27
1831638	KM63XMZBSR5Y	40,0	1.575	123,8	4.874	39,92	1.572	71,5	2.814	32,0	1.260	32	A2BNSN32...	CGS5	MS1595	3,64
left hand																
1982387	KM63XMZBSLF4Y	37,6	1.480	104,6	4.118	21,92	.863	69,1	2.720	26,0	1.024	26	A2BNSN26...	CGS4	MS1595	2,31
1831634	KM63XMZBSLF5Y	40,0	1.575	123,8	4.874	39,92	1.572	71,5	2.814	32,0	1.260	32	A2BNSN32...	CGS5	MS1595	3,63

NOTE: Blades are ordered separately. See the Kennametal Innovations Master Catalog Cutting Tools 2013.





KM63XMZ Internal Cutting Units

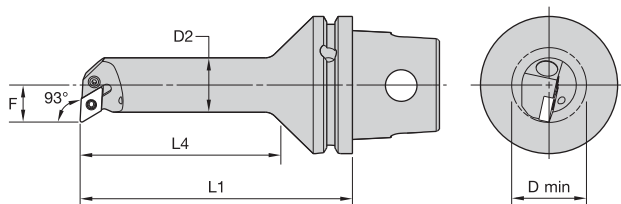


■ PCLN 95°

order number	catalog number	D2		D min		F		L4		L1		gage insert	kg	lbs
		mm	in	mm	in	mm	in	mm	in	mm	in			
2231271	right hand	25	.98	32	1.26	17	.669	88	3.45	125	4.921	CN..120408/CN..432	1,17	2.57
	left hand													
2231272	KM63XMZS25KPCLNLF12Y	25	.98	32	1.26	17	.669	88	3.45	125	4.921	CN..120408/CN..432	1,17	2.57

■ Spare Parts



catalog number	 lever screw	 toggle lever
right hand KM63XMZS25KPCLNR12Y	514.022	511.022
left hand KM63XMZS25KPCLNLF12Y	514.022	511.022



■ PDUN 93°

order number	catalog number	D2		D min		F		L4		L1		gage insert	kg	lbs
		mm	in	mm	in	mm	in	mm	in	mm	in			
2231273	right hand	25	.98	32	1.26	17	.669	88	3.45	125	4.921	DN..110408/DN..332	1,15	2.530
	KM63XMZS25KPDUNR11Y													
2231274	left hand	25	.98	32	1.26	17	.669	88	3.45	125	4.921	DN..110408/DN..332	1,15	2.530
	KM63XMZS25KPDUNLF11Y													

■ Spare Parts

catalog number	 lever screw	 toggle lever
right hand KM63XMZS25KPDUNR11Y	514.012	511.015
left hand KM63XMZS25KPDUNLF11Y	514.012	511.015



KSRM™

Multipurpose Milling Cutters

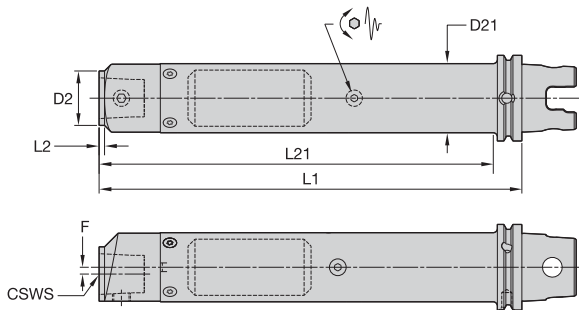
Specially developed for machining titanium and stainless steel. KSRM platform enables you to pocket, profile, ramp, and plunge with up to 1mm (.039") fz with consistent performance, providing outstanding metal removal rates with the lowest cutting forces in roughing applications.

- Anti-rotation feature with eight indexes.
- High positive topography with strong cutting edges.
- High clearance on the cutters and inserts.
- Wide cutter offering with internal coolant.
- Ground and PSTS inserts.
- Provides more stability and reliability.
- Lower cutting forces generated.
- Cutters can run with higher feed rates and better ramping capacities.
- Take advantage of through-spindle coolant to use the latest holders offered.
- Cover extensive workpiece materials.
- Superior productivity and better insert utilization/cost per edge.
- Long tool life and better metal removal rates.
- Able to convert all milling applications.
- Improve tool life and chip evacuation.
- Superior overall performance.

Experience the advantages at your Authorized Kennametal Distributor or at www.kennametal.com.

www.kennametal.com

 **KENNAMETAL®**



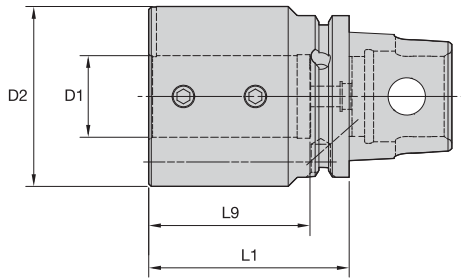
■ TTB • KM Tunable Bar • KM

order number	catalog number	CSWS system size	D2		D21		F		L1		L2		L21	
			mm	in	mm	in	mm	in	mm	in	mm	in	mm	in
3901271	KM63XMZD24TTB9KM40	KM40	38,10	1.500	—	—	0,00	.000	234,55	9.234	216,55	8.526	—	—
3901274	KM63XMZD28TTB14KM40	KM40	44,45	1.750	—	—	0,00	.000	361,52	14.233	4,00	.157	341,52	13.446
3901272	KM63XMZD32TTB12KM40	KM40	50,00	1.969	—	—	5,00	.197	310,71	12.233	4,00	.157	290,71	11.445
3901275	KM63XMZD32TTB16KM40	KM40	50,00	1.969	—	—	5,00	.197	412,32	16.233	4,00	.157	392,32	15.446
3901273	KM63XMZD40TTB15KM40	KM40	63,50	2.500	—	—	11,75	.463	386,92	15.233	4,00	.157	368,92	14.524
3901276	KM63XMZD40TTB20KM40	KM40	63,50	2.500	—	—	11,75	.463	513,92	20.233	4,00	.157	495,92	19.524

NOTE: Tunable technical section, see page M90.



KM63XMZ Adapters



■ BA • Boring Bar Adapter • Internal and External Coolant • Metric



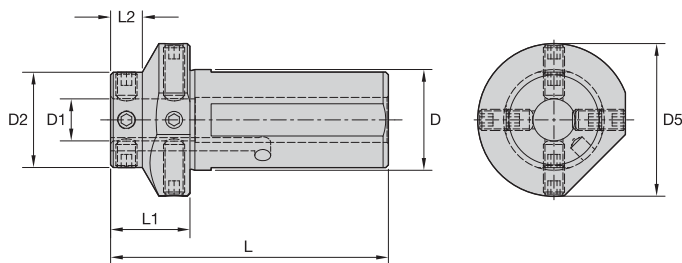
order number	catalog number	D1	D2	L1	L9	clamp screw	nozzle	wrench size clamp screw	Nm	kg
1855688	KM63XMZBA3278Y	32	70	78	63	MS1561	PWZ1012	5mm	25	2
1510611	KM63XMZBA40105Y	40	80	105	76	MS1858	PWZ1012	6mm	45	3

■ BA • Boring Bar Adapter • Internal and External Coolant • Inch



order number	catalog number	D1	D2	L1	L9	clamp screw	nozzle	wrench size clamp screw	ft. lbs.	lbs
1855692	KM63XMZBA125307Y	1 1/4	2.76	3.071	2.48	MS1561	PWZ1012	5mm	18	4
1516678	KM63XMZBA150413Y	1 1/2	3.15	4.134	2.99	MS1858	PWZ1012	6mm	33	7
1831641	KM63XMZBA200512Y	2	3.54	5.118	3.98	MS1858	PWZ1012	6mm	33	9

NOTE: Do not overtighten clamp screw; use torque recommendations above.
 Supplied with clamp screw.
 Clamp screw wrench not included.
 For boring bar reducers, see page A570.



■ BR • Boring Bar Reducer • Metric



order number	catalog number	D	D1	D2	D5	L	L1	L2	flat point socket set screw	wrench size clamp screw	Nm	kg
1521853	KM63XMZBR4008Y	40	8	36	58	105	30	12	—	3mm	7	1,07
1521854	KM63XMZBR4010Y	40	10	36	58	105	30	12	—	3mm	7	1,04
1521857	KM63XMZBR4012Y	40	12	36	58	105	30	12	MS1109	4mm	15	0,93
1521859	KM63XMZBR4016Y	40	16	36	58	105	30	12	MS1109	4mm	15	0,85
1521860	KM63XMZBR4020Y	40	20	58	58	105	30	30	MS1878	4mm	15	0,62
1521858	KM63XMZBR4025Y	40	25	54	54	105	30	30	MS1878	4mm	15	1,03
1521856	KM63XMZBR4032Y	40	32	54	54	105	30	30	MS1878	4mm	15	0,99

■ BR • Boring Bar Reducer • Inch



order number	catalog number	D	D1	D2	D5	L	L1	L2	flat point socket set screw	wrench size clamp screw	ft. lbs.	lbs
1566093	KM63XMZBR150031Y	1.50	5/16	1.42	2.27	4.13	1.181	.472	—	3mm	5	2.21
1566078	KM63XMZBR150038Y	1.50	3/8	1.42	2.27	4.13	1.181	.472	—	3mm	5	2.14
1566079	KM63XMZBR150050Y	1.50	1/2	1.42	2.27	4.13	1.181	.472	MS1109	4mm	11	2.03
1566080	KM63XMZBR150062Y	1.50	5/8	1.42	2.27	4.13	1.181	.472	MS1109	4mm	11	1.90
1566211	KM63XMZBR150075Y	1.50	3/4	2.27	2.27	4.13	1.181	1.181	MS1878	4mm	11	2.13
1566212	KM63XMZBR150100Y	1.50	1	2.27	2.27	4.13	1.181	1.181	MS1878	4mm	11	1.73
1566213	KM63XMZBR150125Y	1.50	1 1/4	2.27	2.27	4.13	1.181	1.181	MS-1879	4mm	11	1.21

NOTE: Do not overtighten clamp screw; use torque recommendations above.
Supplied with clamp screw.
Clamp screw wrench not included.

Looking for a product that's not shown in this catalog?
Check the Kennametal website!

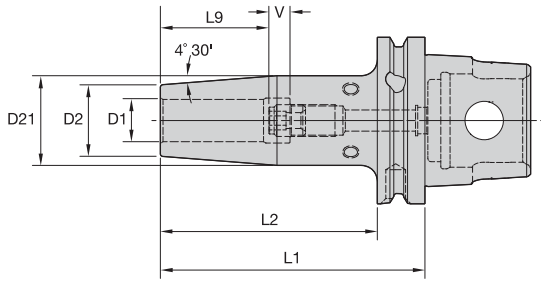


Tooling Systems

Online product catalog available 24/7

Visit <http://www.kennametal.com/toolingsystems/> to browse our electronic catalog any time you're looking for Kennametal's best tooling solutions. It's fast, free, and always available. The online e-catalog is updated weekly with products and solutions for milling, turning, holemaking, and tooling systems applications.

- Balanceable — fine tune with optional M6 set screws.
- Suitable for carbide and HSS cutting tools (requirements below).



Cutting Tool Shank Requirements
metric (ISO standard)

cutting tool shank diameter	tolerance	
4	h4	0,000/-0,004
6	h6	0,000/-0,008
8 & 10	h6	0,000/-0,009
12, 14, 16, & 18	h6	0,000/-0,011
20 & 25	h6	0,000/-0,013
32	h6	0,000/-0,016



■ HPV TT • Metric



order number	catalog number	D1	D2	D21	L1	L2	L9	V	stop screw	wrench size stop screw	kg
3661833	KM63XMZHPVTT04080MY	4	9		80	52	15	10	TTSS05014M	2,5mm	0,74
3661823	KM63XMZHPVTT06080MY	6	21	1	80	62	26	10	TTSS05014M	2,5mm	0,85
3661824	KM63XMZHPVTT08080MY	8	21	1	80	62	26	10	TTSS06014M	3mm	0,84
3661825	KM63XMZHPVTT10090MY	10	24	1	90	72	31	10	TTSS08014M	4mm	0,97
3661826	KM63XMZHPVTT12090MY	12	24	1	90	72	36	10	TTSS10014M	5mm	0,95
3661827	KM63XMZHPVTT14100MY	14	27	1	100	82	36	10	TTSS10014M	5mm	1,08
3661828	KM63XMZHPVTT16100MY	16	27	1	100	82	39	10	TTSS12014M	6mm	1,05
3661829	KM63XMZHPVTT18100MY	18	33	2	100	82	39	10	TTSS12014M	6mm	1,27
3661830	KM63XMZHPVTT20100MY	20	33	2	100	82	41	10	TTSS16014M	8mm	1,24
3661831	KM63XMZHPVTT25120MY	25	44	2	120	102	47	10	TTSS16014M	8mm	1,96
3661832	KM63XMZHPVTT32120MY	32	44	2	120	102	51	10	TTSS16014M	8mm	1,79

(continued)

(HPV TT continued)

Cutting Tool Shank Requirements
inch (industry standard)

cutting tool shank diameter	tolerance
1/4, 5/16, & 3/8	-.0001/-.0004
7/16, 1/2, 9/16, 5/8, & 11/16	.0000/-.0004
3/4, 7/8, 1, & 1-1/4	.0000/-.0005

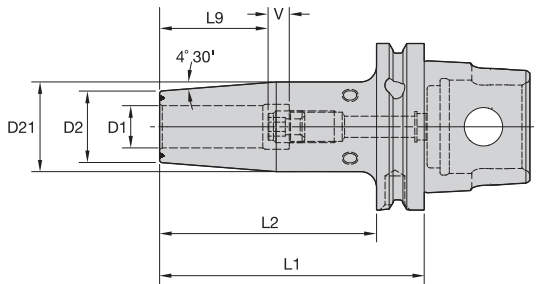
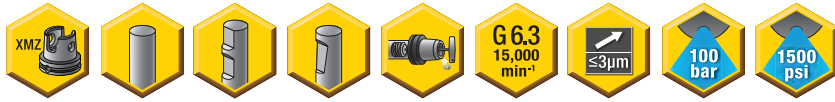
■ HPV TT • Inch



order number	catalog number	D1	D2	D21	L1	L2	L9	V	stop screw	wrench size stop screw	lbs
3858932	KM63XMZHPVTT025315Y	1/4	.827	1.059	3.150	2.441	1.024	.394	TTSS05014M	2,5mm	1.85
3858943	KM63XMZHPVTT031315Y	5/16	.827	1.059	3.150	2.441	1.024	.394	TTSS06014M	3mm	1.84
3858944	KM63XMZHPVTT038335Y	3/8	.945	1.256	3.347	2.638	1.221	.394	TTSS08014M	4mm	2.05
3858945	KM63XMZHPVTT044354Y	7/16	.945	1.256	3.543	2.835	1.417	.394	TTSS10014M	5mm	2.09
3858946	KM63XMZHPVTT050354Y	1/2	.945	1.256	3.543	2.835	1.417	.394	TTSS10014M	5mm	2.06
3858947	KM63XMZHPVTT056354Y	9/16	1.063	1.335	3.543	2.835	1.417	.394	TTSS10014M	5mm	2.19
3858948	KM63XMZHPVTT062374Y	5/8	1.063	1.335	3.740	3.032	1.535	.394	TTSS12014M	6mm	2.22
3858949	KM63XMZHPVTT068374Y	11/16	1.299	1.650	3.740	3.032	1.535	.394	TTSS12014M	6mm	2.68
3858950	KM63XMZHPVTT075394Y	3/4	1.299	1.650	3.937	3.228	1.614	.394	TTSS16014M	8mm	2.73
3858951	KM63XMZHPVTT088394Y	7/8	1.299	1.650	3.937	3.228	1.614	.394	TTSS16014M	8mm	2.64
3858952	KM63XMZHPVTT100453Y	1	1.732	2.083	4.528	3.819	1.850	.394	TTSS16014M	8mm	4.10
3858953	KM63XMZHPVTT125472Y	1 1/4	1.732	2.083	4.724	4.016	2.008	.394	TTSS16014M	8mm	3.96

NOTE: Do not overheat. Overheating will destroy the accuracy and functionality of the toolholder.
Shrink Fit technical section, see page M78.
Supplied with stop screw.
Adjusting stop screw gage, see page M81.
Shrink Fit accessories, see page L12–L13.
Optional M6–1.0P x 5 lg fine-balancing screw set (10 pieces) is available. Order number is MS1276PKG and must be ordered separately.

- 30–50% higher clamping torque compared to GP line.
- Balanceable — fine tune with optional M6 set screws.
- Suitable for carbide only, designated by groove in front face (requirements below).
- 10 kW power or greater Shrink Fit device must be used.



**Cutting Tool Shank Requirements
metric (ISO standard)**

cutting tool shank diameter	tolerance	
12, 14, 16, & 18	h6	0,000/-0,011
20 & 25	h6	0,000/-0,013
32	h6	0,000/-0,016

■ HPV TT HT • Metric



order number	catalog number	D1	D2	D21	L1	L2	L9	V	stop screw	wrench size stop screw	kg
3661834	KM63XMZHPVTTHT12090MY	12	24	1	90	72	36	10	TTSS10014M	5mm	0,95
3661835	KM63XMZHPVTTHT14100MY	14	27	1	100	82	36	10	TTSS10014M	5mm	1,08
3661836	KM63XMZHPVTTHT16100MY	16	27	1	100	82	39	10	TTSS12014M	6mm	1,05
3661837	KM63XMZHPVTTHT18100MY	18	33	2	100	82	39	10	TTSS12014M	6mm	1,27
3661838	KM63XMZHPVTTHT20100MY	20	33	2	100	82	41	10	TTSS16014M	8mm	1,24
3661839	KM63XMZHPVTTHT25120MY	25	44	2	120	102	47	10	TTSS16014M	8mm	1,96
3661840	KM63XMZHPVTTHT32120MY	32	44	2	120	102	51	10	TTSS16014M	8mm	1,79

(continued)

(HPV TT HT continued)

Cutting Tool Shank Requirements
inch (industry standard)

cutting tool shank diameter	tolerance
1/2, 9/16, 5/8, & 11/16	.0000/- .0004
3/4, 7/8, 1, & 1-1/4	.0000/- .0005

■ HPV TT HT • Inch



order number	catalog number	D1	D2	D21	L1	L2	L9	V	stop screw	wrench size stop screw	lbs
3858954	KM63XMZHPVTTHT050354Y	1/2	.94	1.26	3.543	2.83	1.42	.39	TTSS10014M	5mm	2.06
3858955	KM63XMZHPVTTHT056354Y	9/16	1.06	1.33	3.543	2.83	1.42	.39	TTSS10014M	5mm	2.19
3858956	KM63XMZHPVTTHT062374Y	5/8	1.06	1.33	3.740	3.03	1.54	.39	TTSS12014M	6mm	2.22
3858957	KM63XMZHPVTTHT068374Y	11/16	1.30	1.65	3.740	3.03	1.54	.39	TTSS12014M	6mm	2.68
3858958	KM63XMZHPVTTHT075394Y	3/4	1.30	1.65	3.937	3.23	1.61	.39	TTSS16014M	8mm	2.73
3858959	KM63XMZHPVTTHT088394Y	7/8	1.30	1.65	3.937	3.23	1.61	.39	TTSS16014M	8mm	2.64
3858960	KM63XMZHPVTTHT100453Y	1	1.73	2.08	4.528	3.82	1.85	.39	TTSS16014M	8mm	4.10
3858961	KM63XMZHPVTTHT125472Y	1 1/4	1.73	2.08	4.724	4.02	2.01	.39	TTSS16014M	8mm	3.96

NOTE: Do not overheat. Overheating will destroy the accuracy and functionality of the toolholder.

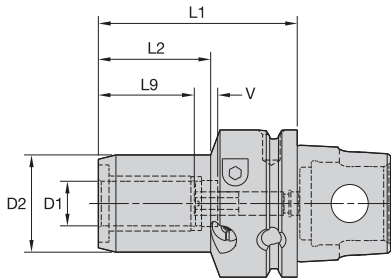
Shrink Fit technical section, see page M78.

Supplied with stop screw.

Adjusting stop screw gage, see page M81.

Shrink Fit accessories, see page L12-L13.

Optional M6-1.0P x 5 lg fine-balancing screw set (10 pieces) is available. Order number is MS1276PKG and must be ordered separately.



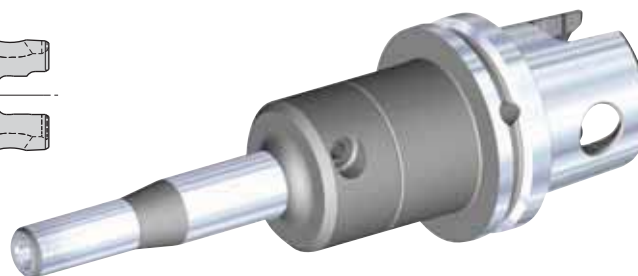
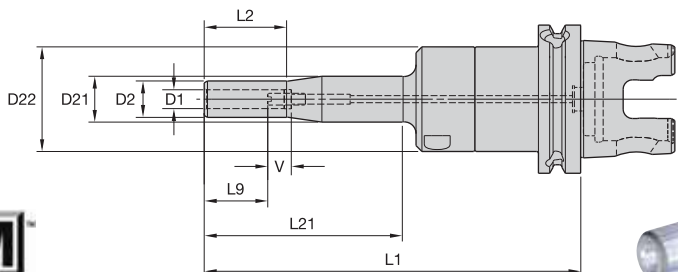
■ HC • Metric

order number	catalog number	D1	D2	L1	L2	L9	V	actuation wrench	wrench size actuation screw	length adjustment wrench	wrench size stop screw	kg
1514516	KM63XMZHC2085Y	20	42	85	48	41	10	170.135	5mm	170.003	3mm	1,36
1514517	KM63XMZHC32100Y	32	60	100	59	51	10	170.136	6mm	170.004	4mm	1,97

■ HC • Inch

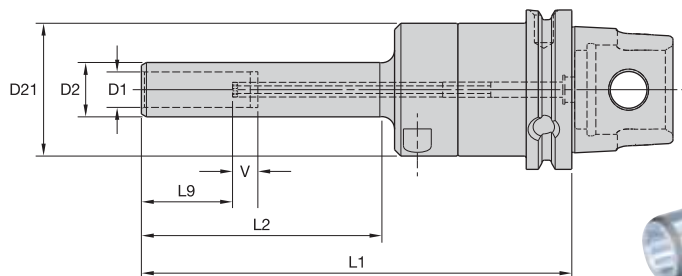
order number	catalog number	D1	D2	L1	L2	L9	V	actuation wrench	wrench size actuation screw	length adjustment wrench	wrench size stop screw	lbs
1514514	KM63XMZHC075335Y	3/4	1.64	3.347	1.89	1.61	.39	170.135	5mm	170.003	3mm	3.04
1514515	KM63XMZHC125394Y	1 1/4	2.35	3.937	2.32	2.01	.39	170.136	6mm	170.004	4mm	4.39

NOTE: Do not overtorque clamp screw. Use supplied wrench and tighten by hand until stop is felt.
Hydraulic chuck technical section, see page M84.
Supplied with stop screw.
Reduction sleeves are available and must be ordered separately; see page J2.


■ HCSLT • Metric

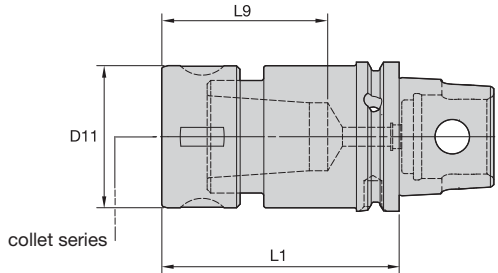
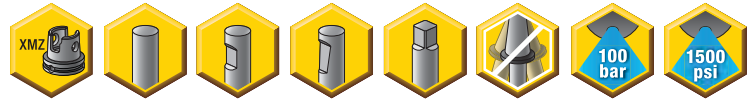
order number	catalog number	D1	D2	D21	D22	L1	L2	L21	L9	V	actuation wrench	wrench size actuation screw	length adjustment wrench	wrench size stop screw	kg
3055511	KM63XMZHCSLT06160MY	6	14	20	44	160	35	85	27	10	170.135	5mm	170.002	2,5mm	1,38
3055512	KM63XMZHCSLT08160MY	8	16	20	44	160	35	85	27	10	170.135	5mm	170.002	2,5mm	1,39
3055513	KM63XMZHCSLT10160MY	10	18	44	—	160	85	142	31	10	170.135	5mm	170.003	3mm	1,37

NOTE: Do not overtorque clamp screw. Use supplied wrench and tighten by hand until stop is felt.
 Hydraulic chuck technical section, see page M84.
 Supplied with stop screw.
 Reduction sleeves are available and must be ordered separately; see page J2.


■ HCSL • Metric

order number	catalog number	D1	D2	D21	L1	L2	L9	V	actuation wrench	wrench size actuation screw	length adjustment wrench	wrench size stop screw	kg
3055514	KM63XMZHCSL12170MY	12	20	44	170	95	36	10	170.135	5mm	170.002	2,5mm	1,41
3055515	KM63XMZHCSL14170MY	14	22	52	170	95	36	10	170.135	5mm	170.002	2,5mm	1,69
3055516	KM63XMZHCSL16170MY	16	24	52	170	95	39	10	170.135	5mm	170.002	2,5mm	1,70
3055517	KM63XMZHCSL18170MY	18	26	52	170	95	39	10	170.135	5mm	170.002	2,5mm	1,75
3055518	KM63XMZHCSL20170MY	20	28	52	170	95	41	10	170.135	5mm	170.002	2,5mm	1,78

- Tremendous grip (3:1 advantage).



TG collet series	Collet Capacity			
	mm		inch	
	min	max	min	max
TG50	1,1	13,5	1/32	17/32
TG75	2,6	20,0	3/64	3/4
TG100	2,6	25,5	5/64	1

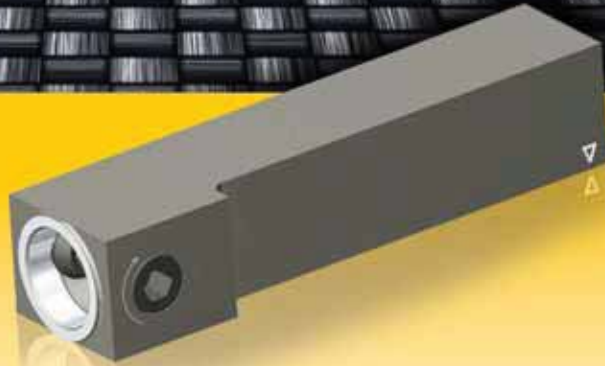
■ TG Collet Chuck • Round Nut

order number	catalog number	collet series	D11		L1		L9		kg	lbs
			mm	in	mm	in	mm	in		
1566225	KM63XMZTG05050Y	TG50	38	1.50	50	1.969	42,0	1.65	0,74	1.63
1516675	KM63XMZTG07575Y	TG75	50	1.97	75	2.953	54,0	2.13	1,30	2.88
1516677	KM63XMZTG100100Y	TG100	60	2.36	100	3.937	70,0	2.72	1,87	4.12

■ Spare Parts

catalog number	locknut	wrench	Nm	ft. lbs.
KM63XMZTG05050Y	LNA050M	HSW34M	55 - 68	40 - 50
KM63XMZTG07575Y	LNA075M	HSW45M	108 - 136	80 - 100
KM63XMZTG100100Y	LNA100M	HSW58M	163 - 203	120 - 150

NOTE: Collet must be loaded into locknut first. Before loading into the chuck body, insert the cutting tool, then tighten to the recommended tightening torque.
Collet chuck technical section, see page M98.
Supplied with locknut.
Locknut wrench must be ordered separately.
Interchangeable locknuts, coolant-style locknuts, and coolant disks are available and must be ordered separately; see pages L16-L17.
Balanceable/interchangeable locknuts are available and must be ordered separately; see page L16.
TG standard straight-bore collets, see page J10.
TG tap collets, see page J10.



KM MicroTM and KMTM Mini

The most economical modular quick-change tooling system available.

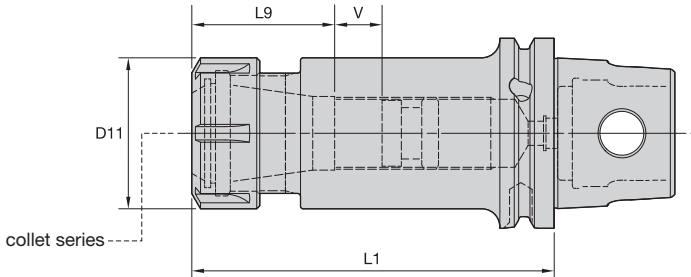
The KM Micro and KM Mini couplings offer a very rigid joint with a high degree of repeatability while maintaining a very compact envelope. This permits a high degree of versatility without sacrificing cutting performance.

- Reduce downtime, increase productivity.
- Replaces conventional square-shank tooling.
- No machine modifications required.
- KM Mini is ideal for machines up to 30 hp (22kW).

Experience the advantages at your Authorized Kennametal Distributor or at www.kennametal.com.

www.kennametal.com





ER collet series	Collet Capacity			
	mm		inch	
	min	max	min	max
ER11	0,5	7,0	.02	.28
ER25	1,0	16,0	.04	.63
ER32	2,0	20,0	.08	.81
ER40	3,0	26,0	.12	1.00

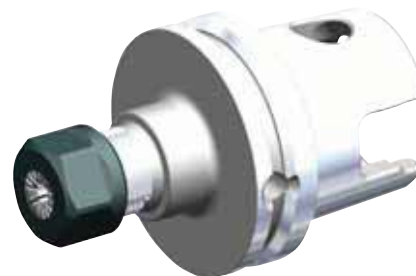
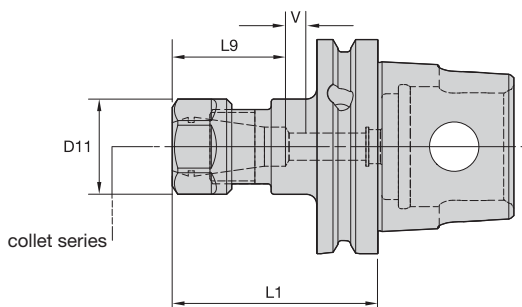
■ ER Collet Chuck • Round Nut



order number	catalog number	collet series	D11		L1		L9		V		locknut	wrench	stop screw	Nm	ft. lbs.	kg	lbs
			mm	in	mm	in	mm	in	mm	in							
1826965	KM63XMZER1160Y	ER11	16	.63	60	2.362	24,0	.94	—	—	LER11M	ER11WEM	—	16	12	0,71	1.56
1822413	KM63XMZER1190Y	ER11	16	.63	90	3.543	24,0	.94	—	—	LER11M	ER11WEM	—	16	12	0,82	1.81
1504983	KM63XMZER2560Y	ER25	42	1.65	60	2.362	40,0	1.57	—	—	LNSER25M	ER25WM	—	104	77	0,85	1.88
1714892	KM63XMZER25120Y	ER25	42	1.65	120	4.724	40,0	1.57	40	1.57	LNSER25M	ER25WM	SS075041G	104	77	1,41	3.11
1516809	KM63XMZER3260Y	ER32	50	1.97	60	2.362	47,0	1.83	—	—	LNSER32M	ER32WM	—	136	100	0,91	2.00
1798651	KM63XMZER32120Y	ER32	50	1.97	120	4.724	46,0	1.81	34	1.34	LNSER32M	ER32WM	SS094041G	136	100	1,69	3.72
1714893	KM63XMZER4090Y	ER40	63	2.48	90	3.543	70,3	2.77	—	—	LNSER40M	ER40WM	—	176	130	1,65	3.64

(continued)

(ER Collet Chuck continued)



KM63XMZ Shank Tools

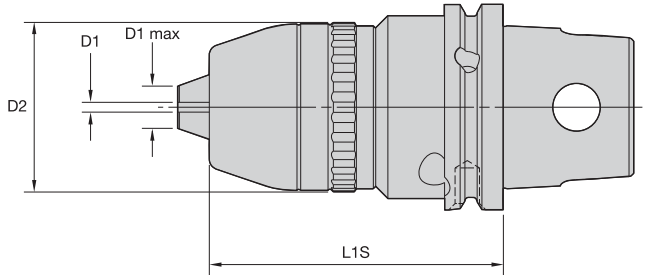
ER collet series	mm		inch	
	min	max	min	max
ER16	0,5	10,0	.02	.41



■ ER Collet Chuck • Hex Nut

order number	catalog number	collet series	D11		L1		L9		V		locknut	wrench	stop screw	Collet Capacity			
			mm	in	mm	in	mm	in	mm	in				mm	in	Nm	ft. lbs.
1532048	KM63XMZER16120Y	ER16	28	1.10	120	4.724	32	1.26	48	1.89	LNHSER16M	OEW25M	SS044038G	56	42	1,00	2.21
1516808	KM63XMZER1660Y	ER16	28	1.10	60	2.362	32	1.26	9	.35	LNHSER16M	OEW25M	SS044038G	56	42	0,74	1.63

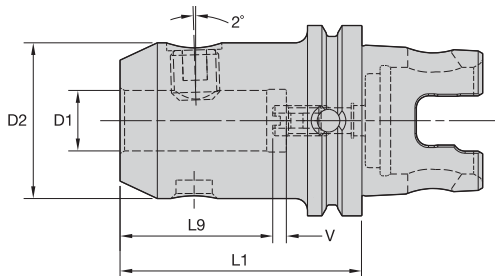
NOTE: Collet must be loaded into locknut first. Before loading into the chuck body, insert the cutting tool, then tighten to the recommended tightening torque.
 Collet chuck technical section, see page M98.
 Supplied with locknut and stop screw.
 Locknut wrench must be ordered separately.
 Interchangeable coolant-style locknuts and coolant disks are available and must be ordered separately; see page L19.
 Stop screw coolant caps are available and must be ordered separately; see pages L34–L35.
 ER standard straight-bore collets, see page J50.
 ER tap collets, see pages J58–J59.
 ER TCT tension-only tap collets, see page J60.



■ RDC • Drill Chuck

order number	catalog number	D1		D1 max		D2		L1S	
		mm	in	mm	in	mm	in	mm	in
1921511	KM63XMZRDC1390Y	1	.031	13	.500	50	1.949	90,0	3.543
3049855	KM63XMZRDC1690Y	3	.125	16	.625	52	2.047	90,0	3.543

NOTE: Activation size is 6mm.
 Activation wrench included.
 Wrench reorder number is 170.136.

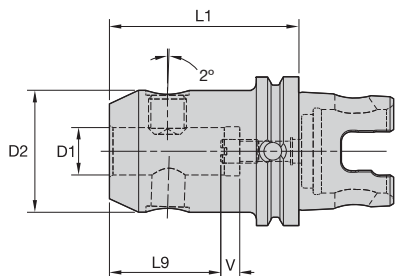


■ WN • Whistle Notch Adapter



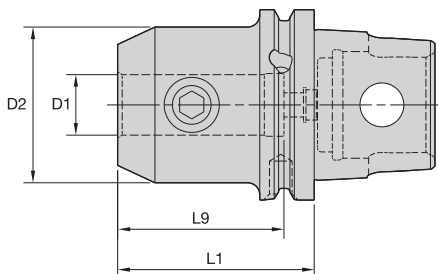
order number	catalog number	D1	D2	L1	L9	V	lock screw	wrench size lock screw	Nm	stop screw	wrench size stop screw	kg
1982384	KM63XMZWV0660Y	6	25	60	30	8	SS03M012	3mm	7	571.060	2,5mm	0,76
1831642	KM63XMZWV0865Y	8	28	65	30	8	SS03M014	4mm	15	571.067	3mm	0,82
1831703	KM63XMZWV1070Y	10	35	70	35	7	SS03M018	5mm	25	571.068	4mm	0,96
1831704	KM63XMZWV1275Y	12	42	75	40	7	SS03M023	6mm	35	571.074	5mm	1,15
1831705	KM63XMZWV1475Y	14	44	75	40	7	SS03M023	6mm	35	571.074	5mm	1,19
1831706	KM63XMZWV1680Y	16	48	80	43	7	SS03M025	6mm	50	571.074	5mm	1,37
1982385	KM63XMZWV1880Y	18	50	80	43	7	SS03M025	6mm	50	571.074	5mm	1,41
1714887	KM63XMZWV2080Y	20	52	80	45	7	SS03M026	8mm	95	571.074	5mm	1,45
1714888	KM63XMZWV2585Y	25	65	85	50	8	SS03M027	10mm	135	571.074	5mm	2,01
1714889	KM63XMZWV3295Y	32	72	95	54	10	SS03M029	10mm	160	571.075	6mm	2,54

NOTE: Do not overtighten lock screw; use torque recommendations above.
 Supplied with lock screw and stop screw.
 Lock screw and stop screw wrenches are not included.


■ WN/EM • Whistle Notch and End Mill Adapter

order number	catalog number	D1	D2	L1	L9	V	lock screw		stop screw		kg	
							wrench size lock screw	Nm	wrench size stop screw	Nm		
2231550	KM63XMZWNE0680Y	6	25	80	32	8	SS03M012	3mm	7	571.060	2,5mm	0,88
2231551	KM63XMZWNE0880Y	8	28	80	32	8	SS03M014	4mm	15	571.067	3mm	0,94
2231552	KM63XMZWNE1080Y	10	35	80	37	8	SS03M018	5mm	25	571.068	4mm	1,07
2231593	KM63XMZWNE1280Y	12	42	80	42	8	SS03M023	6mm	35	571.074	5mm	1,24
2231594	KM63XMZWNE1480Y	14	44	80	42	8	SS03M023	6mm	35	571.074	5mm	1,29
2231595	KM63XMZWNE1680Y	16	48	80	45	8	SS03M025	6mm	50	571.074	5mm	1,39
2231596	KM63XMZWNE1880Y	18	50	80	45	8	SS03M025	6mm	50	571.074	5mm	1,44
2231597	KM63XMZWNE2080Y	20	52	80	47	8	SS03M026	8mm	95	571.074	5mm	1,49
2231598	KM63XMZWNE2580Y	25	65	80	52	8	SS03M027	10mm	135	571.074	5mm	1,85
2231599	KM63XMZWNE3280Y	32	72	80	56	8	SS03M029	10mm	160	571.074	5mm	2,10
2231600	KM63XMZWNE4095Y	40	80	95	67	8	SS03M029	10mm	160	571.074	5mm	2,75

NOTE: Do not overtighten lock screw; use torque recommendations above.
 Supplied with lock screw and stop screw.
 Lock screw and stop screw wrenches are not included.



■ EM • Metric



order number	catalog number	D1	D2	L1	L9	lock screw	wrench size lock screw	Nm	kg
1621006	KM63XMZEM06100Y	6	25	100	40	SS03M012	3mm	7	0,98
1621010	KM63XMZEM08100Y	8	28	100	40	SS03M014	4mm	15	1,05
1621054	KM63XMZEM10100Y	10	35	100	45	SS03M018	5mm	25	1,22
1510191	KM63XMZEM1255Y	12	42	55	50	SS03M023	6mm	35	0,94
1511879	KM63XMZEM1660Y	16	48	60	53	SS03M025	6mm	50	1,09
1844636	KM63XMZEM1860Y	18	50	60	53	SS03M025	6mm	50	1,12
1511880	KM63XMZEM2065Y	20	52	65	55	SS03M026	8mm	95	1,21
1512091	KM63XMZEM2580Y	25	65	80	60	SS03M027	10mm	135	1,88
1714890	KM63XMZEM3290Y	32	72	90	65	SS03M029	10mm	160	2,38

■ EM • Inch

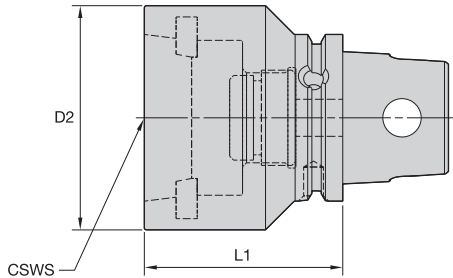


order number	catalog number	D1	D2	L1	L9	lock screw	wrench size lock screw	ft. lbs.	lbs
1723304	KM63XMZEM050216Y	1/2	1.38	2.165	1.97	ELS044038PKG	7/32	20	1.80
1516667	KM63XMZEM062236Y	5/8	1.63	2.362	2.09	ELS056050PKG	1/4	40	2.07
1516669	KM63XMZEM075256Y	3/4	1.75	2.559	2.22	ELS062050PKG	5/16	70	2.25
1516672	KM63XMZEM100315Y	1	2.00	3.150	2.46	ELS075056PKG	3/8	110	2.87
1516673	KM63XMZEM125335Y	1 1/4	2.50	3.346	2.51	ELS075062PKG	3/8	110	3.97
1831838	KM63XMZEM200492Y	2	3.75	4.921	3.53	ELS100088PKG	1/2	150	10.47

NOTE: Do not overtighten lock screw; use torque recommendations above.
Supplied with lock screw.
Lock screw wrench not included.



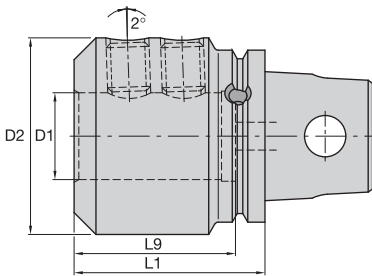
KM63XMZ Shank Tools



■ KR • Romicron Boring Head Adapter

order number	catalog number	CSWS system size	D2	L1	kg
1831590	KM63XMZKR5060Y	KR50	65	60	1,40
1831589	KM63XMZKR6375Y	KR63	85	75	2,20

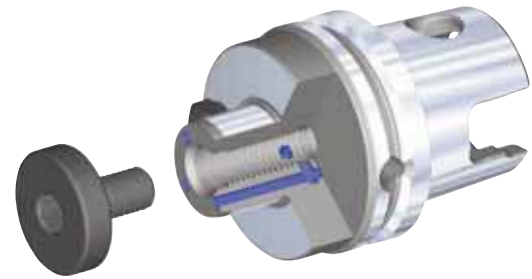
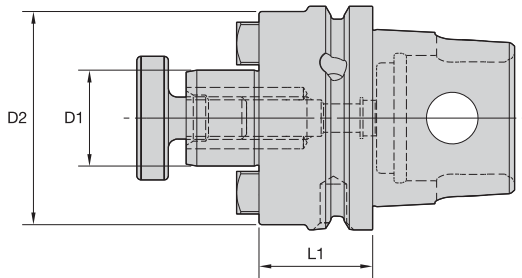
NOTE: Do not overtighten lock screw; use torque recommendations above.
Supplied with lock screw.
Lock screw wrench not included.
For a complete listing of Romicron boring adapters, see the Kennametal Innovations Master Catalog Cutting Tools 2013.



■ DAI

order number	catalog number	D1	D2	L1	L9	clamp screw	wrench size clamp screw	Nm	kg
1516811	KM63XMZDAI3270Y	32	72	70	59	SS03M026	8 mm	95	1,81
1516812	KM63XMZDAI40100Y	40	90	100	75	SS03M029	10 mm	160	4,30





■ SMC • Metric



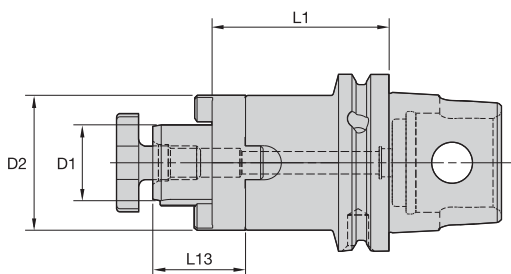
order number	catalog number	D1	D2	L1	lock screw	drive key	wrench size lock screw	kg
3950758	KM63XMZSMC16028MY	16	44	28	MS1294	KDK16M	6mm	0,78
3950759	KM63XMZSMC22028MY	22	49	28	MS1234	KDK22M	8mm	0,84
3950760	KM63XMZSMC27032MY	27	60	32	KLSS27M	KDK27M	10mm	1,05
3950761	KM63XMZSMC32040MY	32	78	40	KLSS32M	KDK32M	14mm	1,60

■ SMC/SM2C • Inch



order number	catalog number	D1	D2	L1	lock screw	drive key	wrench size lock screw	lbs
3950898	KM63XMZSMC050102Y	1/2	1.44	1.024	KLS05	KDK04	3/16	1.56
3950900	KM63XMZSM2C075102Y	3/4	1.46	1.024	KLS07	—	1/4	1.63
3950899	KM63XMZSMC075102Y	3/4	1.75	1.024	KLS07	KDK05	3/16	1.70
3950902	KM63XMZSM2C100126Y	1	2.19	1.260	KLS10	KDK06	5/16	2.19
3950901	KM63XMZSMC100126Y	1	2.75	1.260	KLS10	KDK06	5/16	2.49
3950903	KM63XMZSMC125157Y	1 1/4	2.88	1.575	KLS12	KDK08	5/16	3.35
3950904	KM63XMZSMC150177Y	1 1/2	3.69	1.770	KLS15	KDK10	3/8	5.11

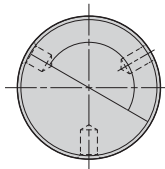
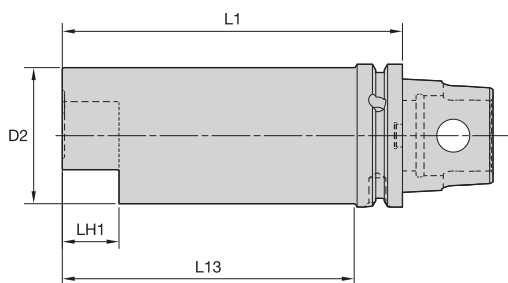
NOTE: Do not overtighten lock screw.
Supplied with lock screw and drive keys.
Interchangeable coolant-style lock screws are available and must be ordered separately; see page L38.
Lock screw wrench not included.



■ CS • Metric

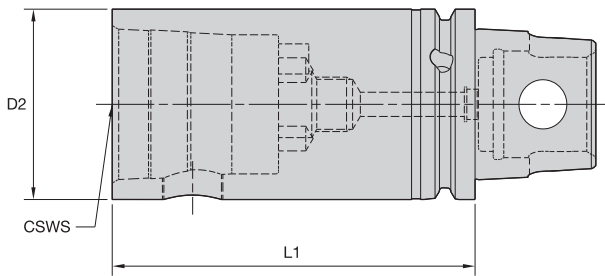
order number	catalog number	D1	D2	L1	L13	lock screw	lock screw	wrench size lock screw	wrench	kg
2231604	KM63XMZCS1663Y	16	32	63	17	MS1294	—	6mm	—	0,98
2231606	KM63XMZCS22110Y	22	50	110	19	MS1234	—	8mm	—	2,29
2231601	KM63XMZCS2228Y	22	50	28	19	MS1234	—	8mm	—	1,87
2231605	KM63XMZCS2263Y	22	50	63	19	MS1234	—	8mm	—	0,88
2231608	KM63XMZCS27110Y	27	63	110	21	—	KLS27M	—	SMW27M	1,70
2231602	KM63XMZCS2732Y	27	63	32	21	—	KLS27M	—	SMW27M	2,98
2231607	KM63XMZCS2763Y	27	63	63	21	—	KLS27M	—	SMW27M	3,46
2231610	KM63XMZCS32110Y	32	78	110	24	—	KLS32M	—	SMW32M	2,20
2231603	KM63XMZCS3240Y	32	78	40	24	—	KLS32M	—	SMW32M	1,10
2231609	KM63XMZCS3263Y	32	78	63	24	—	KLS32M	—	SMW32M	1,42

NOTE: Do not overtighten lock screw.
Supplied with lock screw, drive ring, and key.
Lock screw wrench not included.



■ GB • Gage Bar

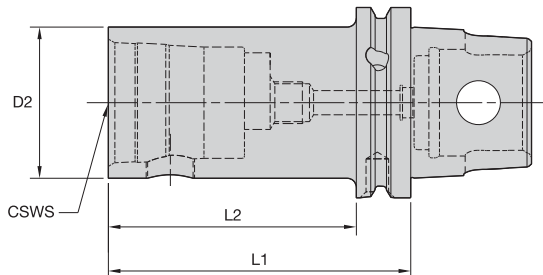
order number	catalog number	D2		L1		L13		LH1		kg	lbs
		mm	in	mm	in	mm	in	mm	in		
1797483	KM63XMZGB50200Y	50	1.97	200	7.87	178	7.00	20	.79	3,28	7.22
1661912	KM63XMZGB60150Y	60	2.36	150	5.91	129	5.07	25	.98	3,26	7.20



■ S • KM Extensions



order number	catalog number	CSWS system size	D2		L1		wrench size actuation screw			spare parts package	kg lbs	
			mm	in	mm	in	Nm	ft. lbs.	kg		lbs	
1319536	KM63XMZS6380Y	KM63	63	2.480	80	3.150	12mm	47-54	35-40	KM63PKG3S	1,73	3.81
1511923	KM63XMZS63120Y	KM63	63	2.480	120	4.724	12mm	47-54	35-40	KM63PKG3S	2,68	5.92



■ S • KM Reducer



order number	catalog number	CSWS system size	D2		L1		L2		wrench size actuation screw			spare parts package	kg lbs	
			mm	in	mm	in	mm	in	Nm	ft. lbs.	kg		lbs	
1512243	KM63XMZS3270Y	KM32	32	1.260	70	2.756	46	1.811	5mm	8-11	6-8	KM32PKG3S	0,91	2.00
1511925	KM63XMZS4080Y	KM40	40	1.575	80	3.150	59	2.323	6mm	12-16	9-12	KM40PKG3S	1,14	2.51
1831639	KM63XMZS5058Y	KM50	50	1.969	58	2.299	36	1.417	10mm	27-34	20-25	KM50PKG3S	0,87	1.91
1509861	KM63XMZS50100Y	KM50	50	1.969	100	3.937	79	3.110	10mm	27-34	20-25	KM50PKG3S	1,67	3.68

■ S • KM Reducer • Centerline

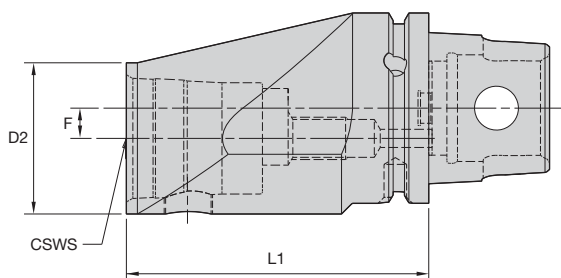


order number	catalog number	CSWS system size	D2		L1		wrench size actuation screw			spare parts package	kg lbs	
			mm	in	mm	in	Nm	ft. lbs.	kg		lbs	
3306139	KM63XMZS5065Y	KM50	50	1.969	65	2.559	10 mm	27-34	20-25	KM50PKG3L	1,42	3.13

NOTE: Designed for centerline KM cutting units.



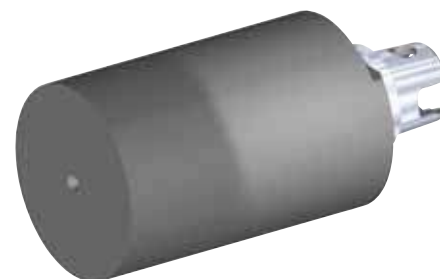
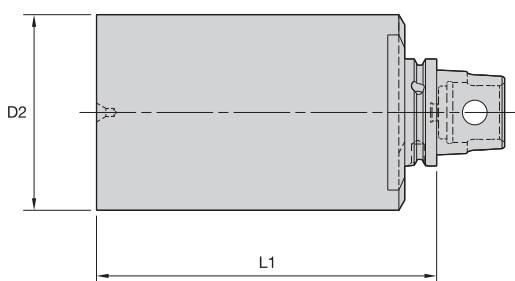
KM63XMZ Adapters



■ ES • KM Offset Reducer



order number	catalog number	CSWS system size	D2		L1		F		wrench size actuation screw			spare parts package	kg	lbs
			mm	in	mm	in	mm	in	mm	Nm	ft. lbs.			
1831587	KM63XMZES40110Y	KM40	40	1.575	110	4.331	18	.709	6mm	12-16	9-12	KM40PKG3S	2,38	5.25
1516814	KM63XMZES50100Y	KM50	50	1.969	100	3.937	10	.394	10mm	27-34	20-25	KM50PKG3S	2,21	4.87



■ BN • Blank

order number	catalog number	D2		L1		hardness range	kg	lbs
		mm	in	mm	in			
1831586	KM63XMZBN115200Y	115	4.528	200	7.874	32-38 RW C	15,21	33.54