

INNOVATIONS  
**MASTER CATALOG**

**TOOLING SYSTEMS**  
2013

[www.kennametal.com](http://www.kennametal.com)



**GENERAL ENGINEERING**

**TRANSPORTATION**



**AEROSPACE & DEFENSE**

**EARTHWORKS**

**ENERGY**

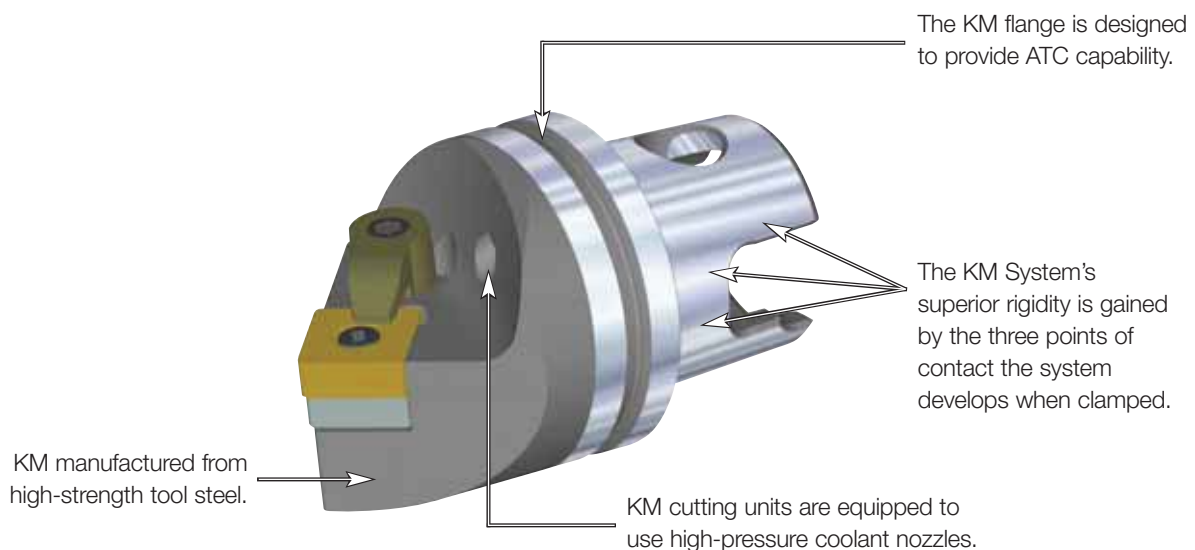
# KM™ Quick Change Clamping System • KM32TS™ Series

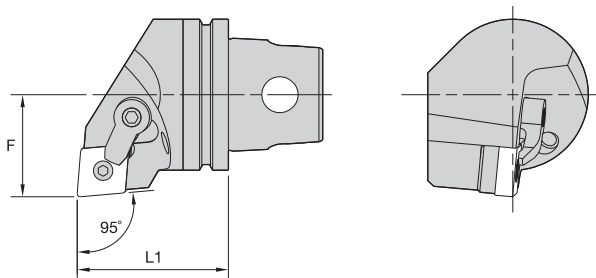
## Primary Application

The KM Quick Change Clamping System is the best system on the market suitable for static, rotating, and multitasking operations. With its industry-leading design, the KM Quick Change System provides greater clamping forces than other quick-change systems. The KM Quick Change System gives you the flexibility to use KM on any application within your shop.

## Features and Benefits

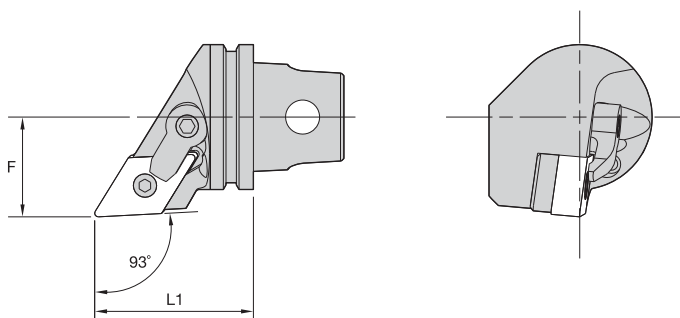
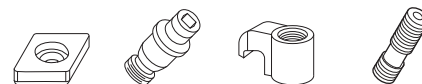
- KM is an ISO standard (ISO 26622).
- KM clamping units provide a 4:1 mechanical advantage.
- KM cutting units are capable of 100 bar (1,500 psi) coolant pressure.





■ MCLN 95°

order number	catalog number	L1		F		gage insert	shim	lock pin	clamp	clamp screw
		mm	in	mm	in					
1023224	KM32TSMCLNR12	35	1.378	22	.866	CN..120408/CN..432	ICSN432	KLM46	CKM20LP	STCM11
1023228	KM32TSMCLNL12	35	1.378	22	.866	CN..120408/CN..432	ICSN432	KLM46	CKM20LP	STCM11

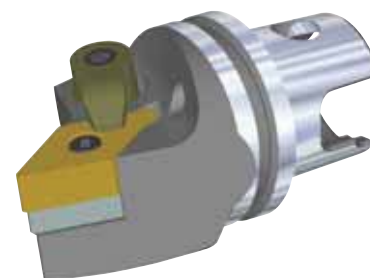
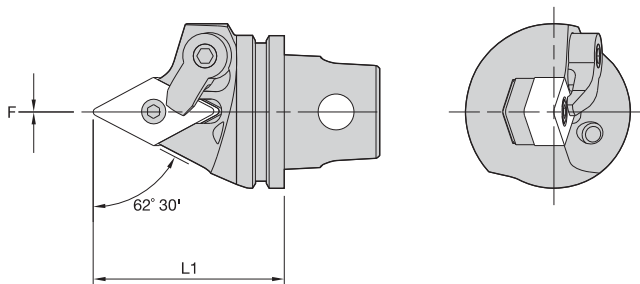


■ MDJN 93°

order number	catalog number	L1		F		gage insert	shim	lock pin	clamp	clamp screw
		mm	in	mm	in					
3095644	KM32TSMDJNR1504	35	1.378	22	.866	DN..150408/DN..432	IDSN442	KLM46L	CKM20LP	STCM11
1023232	KM32TSMDJNR1506	35	1.378	22	.866	DN..150608/DN..442	IDSN432	KLM46L	CKM20LP	STCM11
3095643	KM32TSMDJNL1504	35	1.378	22	.866	DN..150408/DN..432	IDSN442	KLM46L	CKM20LP	STCM11
1023275	KM32TSMDJNL1506	35	1.378	22	.866	DN..150608/DN..442	IDSN432	KLM46L	CKM20LP	STCM11



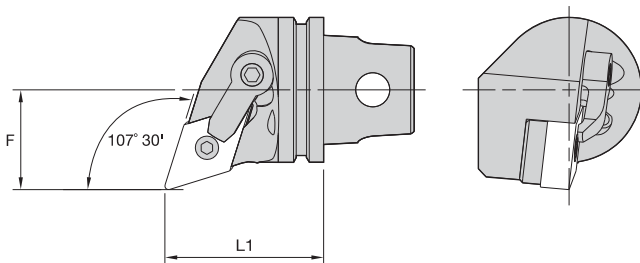




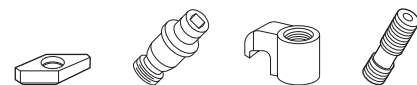
■ MDPN 62° 30'



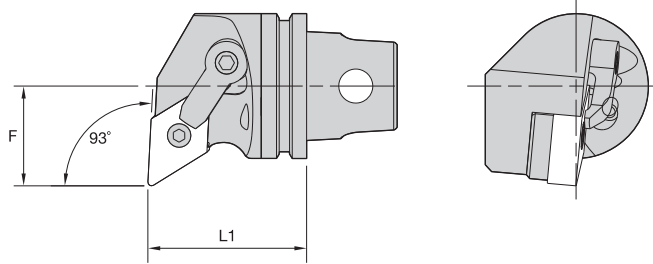
order number	catalog number	L1		F		gage insert	shim	lock pin	clamp	clamp screw
		mm	in	mm	in					
3095645	KM32TSM DPNN1504	40	1.575	0	.000	DN..150408/DN..432	IDSN442	KLM46L	CKM20LP	STCM11
1022560	KM32TSM DPNN1506	40	1.575	0	.000	DN..150608/DN..442	IDSN432	KLC46L	CKM20LP	STCC11



■ MDQN 107° 30'



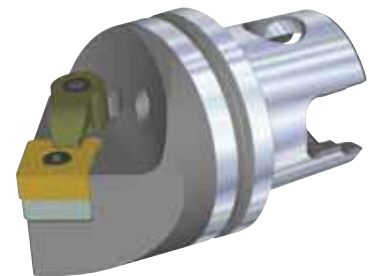
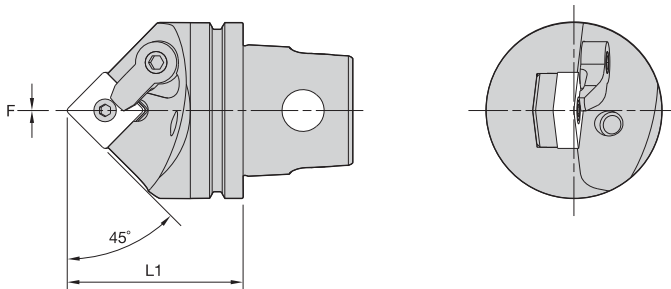
order number	catalog number	L1		F		gage insert	shim	lock pin	clamp	clamp screw
		mm	in	mm	in					
1023233	right hand KM32TSM DQNR1506	35	1.378	22	.866	DN..150608/DN..442	IDSN432	KLM46L	CKM23LP	STCM11
1023276	left hand KM32TSM DQNL1506	35	1.378	22	.866	DN..150608/DN..442	IDSN432	KLM46L	CKM23LP	STCM11



■ MDUN 93°



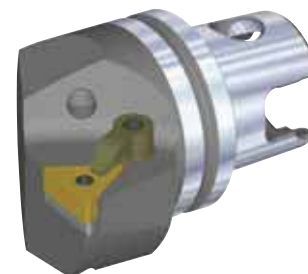
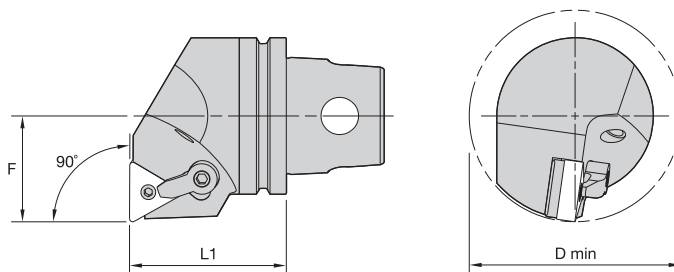
order number	catalog number	L1		F		gage insert	shim	lock pin	clamp	clamp screw
		mm	in	mm	in					
1023274	right hand	35	1.378	22	.866	DN..150608/DN..442	IDSN432	KLM46L	CKM23LP	STCM11
	left hand									
1023277	KM32TSM DUNL1506	35	1.378	22	.866	DN..150608/DN..442	IDSN432	KLM46L	CKM23LP	STCM11



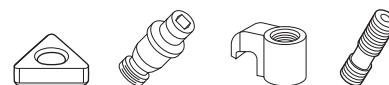
■ MSDN 45°



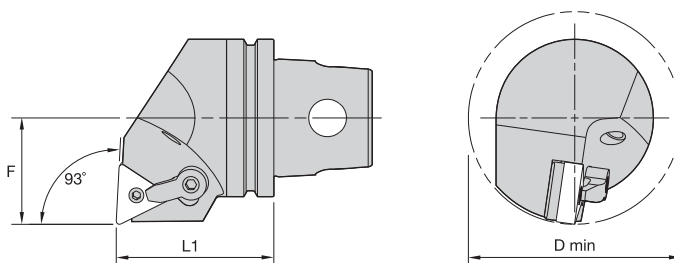
order number	catalog number	L1		F		gage insert	shim	lock pin	clamp	clamp screw
		mm	in	mm	in					
1144875	KM32TSM SDNN12	40	1.575	0	.000	SN..120408/SN..432	ISSN432	KLM46	CKM20LP	STCM11



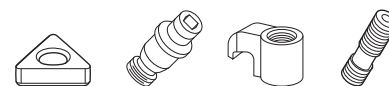
■ MTFN 90°



order number	catalog number	L1		F		D min		gage insert	shim	lock pin	clamp	clamp screw
		mm	in	mm	in	mm	in					
1023281	KM32TSMTFNL16	35	1.378	22	.866	44	1.732	TN..160408/TN..332	ITSN322	KLM34L	CKM7LP	STCM9

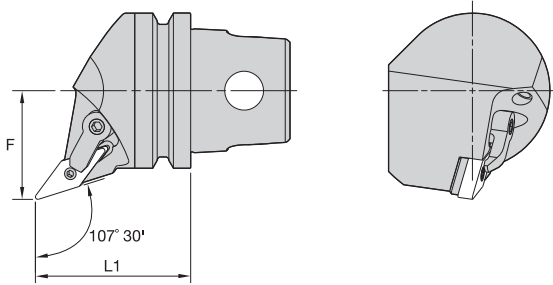


■ MTUN 93°



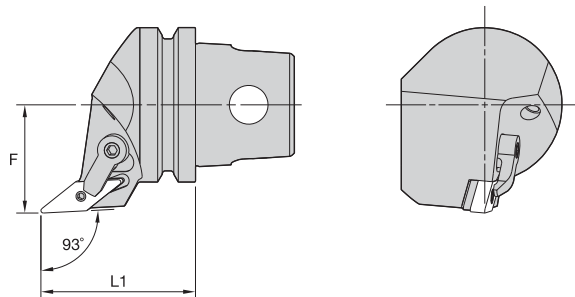
order number	catalog number	L1		F		D min		gage insert	shim	lock pin	clamp	clamp screw
		mm	in	mm	in	mm	in					
1144903	KM32TSMTUNR16	35	1.378	22	.866	44	1.732	TN..160408/TN..332	ITSN322	KLM34L	CKM7LP	STCM9





■ MVHN 107° 30'

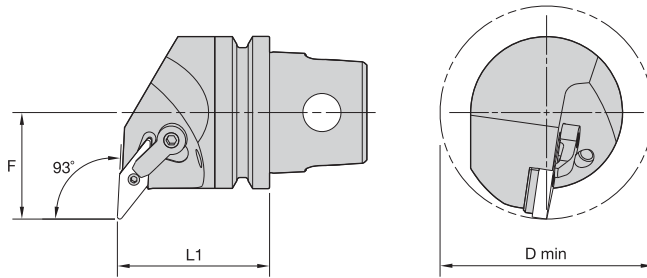
order number	catalog number	L1		F		gage insert	shim	lock pin	clamp	clamp screw
		mm	in	mm	in					
1144909	KM32TSMVHNR16	35	1.378	22	.866	VN..160408/VN..332	IVSN322	KLM34L	CKM23LP	STCM11
1144910	KM32TSMVHNL16	35	1.378	22	.866	VN..160408/VN..332	IVSN322	KLM34L	CKM23LP	STCM11



■ MVJN 93°

order number	catalog number	L1		F		gage insert	shim	lock pin	clamp	clamp screw
		mm	in	mm	in					
1023280	KM32TSMVJNR16	40	1.575	22	.866	VN..160408/VN..332	IVSN322	KLM34L	CKM23LP	STCM11
1023283	KM32TSMVJNL16	40	1.575	22	.866	VN..160408/VN..332	IVSN322	KLM34L	CKM23LP	STCM11

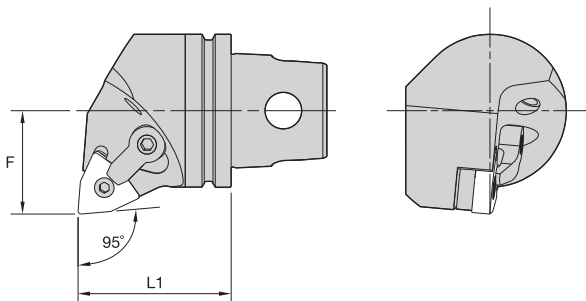




■ MVUN 93°



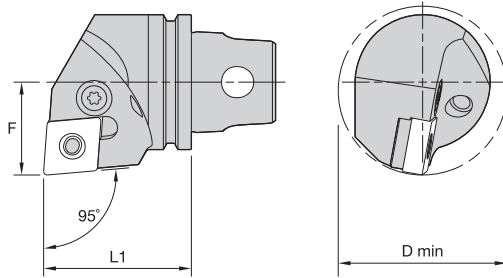
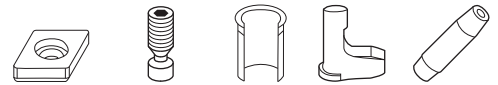
order number	catalog number	L1		F		D min		gage insert	shim	lock pin	clamp	clamp screw
		mm	in	mm	in	mm	in					
1144911	right hand	35	1.378	27	1.063	54	2.126	VN..160408/VN..332	IVSN322	KLM34L	CKM23LP	STCM11
	KM32TSMVUNR16											
1144912	left hand	35	1.378	27	1.063	54	2.126	VN..160408/VN..332	IVSN322	KLM34L	CKM23LP	STCM11
	KM32TSMVUNL16											



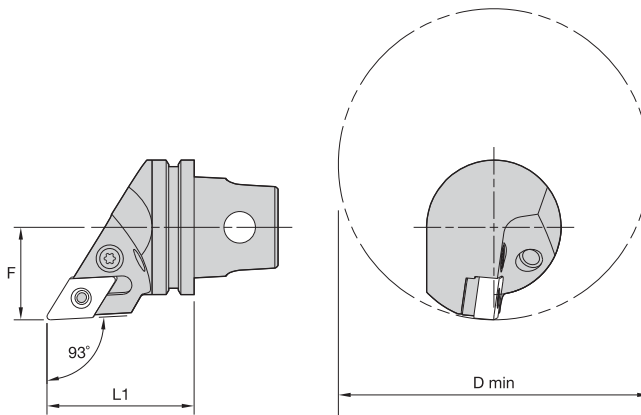
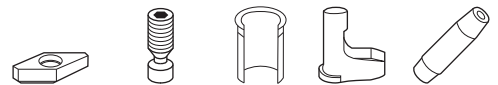
■ MWLN 95°



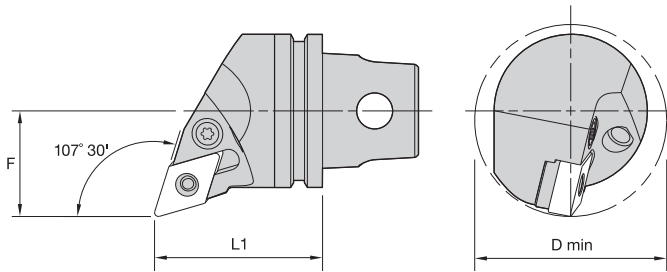
order number	catalog number	L1		F		gage insert	shim	lock pin	clamp	clamp screw
		mm	in	mm	in					
1144914	right hand	35	1.378	22	.866	WN..080408/WN..432	IWSN433	KLM46	CKM20LP	STCM11
	KM32TSMWLN R08									
1144915	left hand	35	1.378	22	.866	WN..080408/WN..432	IWSN433	KLM46	CKM20LP	STCM11
	KM32TSMWLN L08									


**■ PCLN 95°**


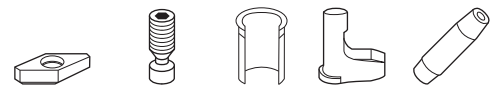
order number	catalog number	L1		F		D min		gage insert	shim	lever screw	shim pin	toggle lever	punch
		mm	in	mm	in	mm	in						
1624632	<b>right hand</b> KM32TSPCLNR12	35	1.378	22	.866	40	1.575	CN..120408/CN..432	512.112	514.123	513.023	511.023	515.018
1135468	<b>left hand</b> KM32TSPCLNL12	35	1.378	22	.866	40	1.575	CN..120408/CN..432	512.112	514.123	513.023	511.023	515.018


**■ PDJN 93°**


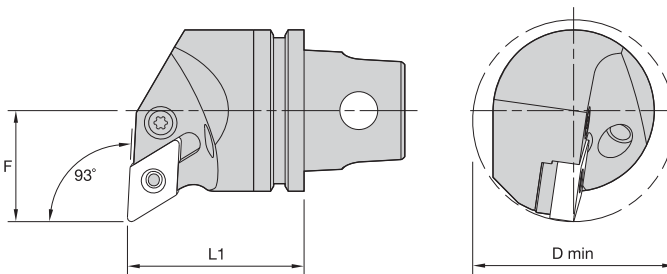
order number	catalog number	L1		F		D min		gage insert	shim	lever screw	shim pin	toggle lever	punch
		mm	in	mm	in	mm	in						
1232377	<b>right hand</b> KM32TSPDJNR11	35	1.378	22	.866	74	2.913	DN..110408/DN..332	512.060	514.118	513.060	511.060	515.018
1232378	<b>left hand</b> KM32TSPDJNL11	35	1.378	22	.866	74	2.913	DN..110408/DN..332	512.060	514.118	513.060	511.060	515.018



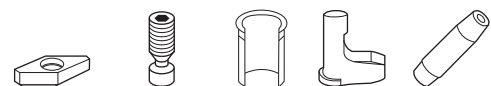
■ PDQN 107° 30'



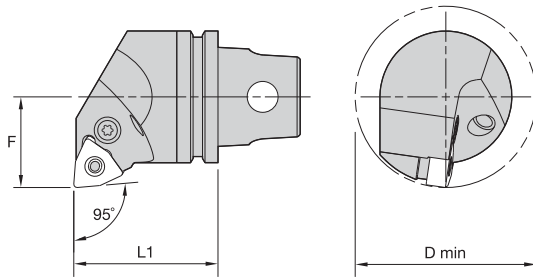
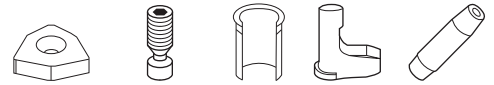
order number	catalog number	L1		F		D min		gage insert	shim	lever screw	shim pin	toggle lever	punch
		mm	in	mm	in	mm	in						
1671515	KM32TSPDQNR11	35	1.378	22	.866	44	1.732	DN..110408/DN..332	512.060	514.118	513.060	511.060	515.018



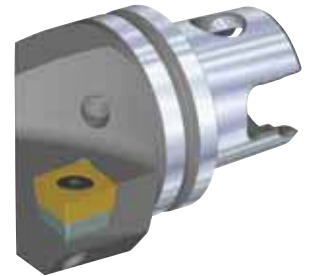
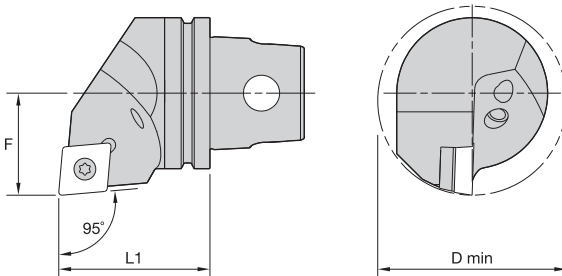
■ PDUN 93°



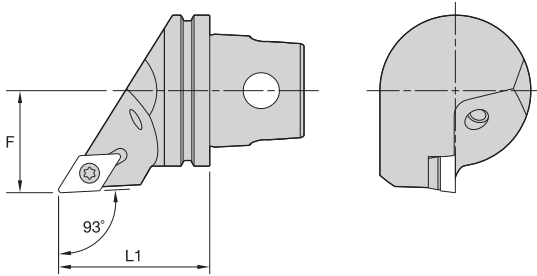
order number	catalog number	L1		F		D min		gage insert	shim	lever screw	shim pin	toggle lever	punch
		mm	in	mm	in	mm	in						
1232375	KM32TSPDUNR11	35	1.378	22	.866	40	1.575	DN..110408/DN..332	512.060	514.118	513.060	511.060	515.018
1232376	KM32TSPDUNL11	35	1.378	22	.866	40	1.575	DN..110408/DN..332	512.060	514.118	513.060	511.060	515.018


**■ PWLN 95°**


order number	catalog number	L1		F		D min		gage insert	shim	lever screw	shim pin	toggle lever	punch
		mm	in	mm	in	mm	in						
	right hand												
1232372	KM32TSPWLN R06	35	1.378	22	.866	44	1.732	WN..060408/WN..332	512.134	514.118	513.018	511.018	515.018
	left hand												
1232374	KM32TSPWLN L06	35	1.378	22	.866	44	1.732	WN..060408/WN..332	512.134	514.118	513.018	511.018	515.018


**■ SCLC 95°**

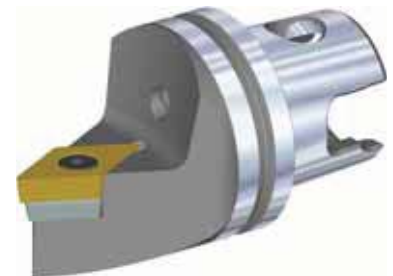
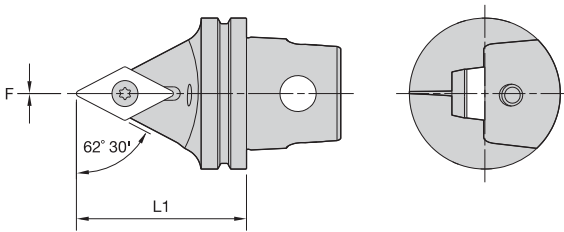

order number	catalog number	L1		F		D min		gage insert	shim	insert screw	shim screw
		mm	in	mm	in	mm	in				
	right hand										
1144416	KM32TSSCLCR09	35	1.378	22	.866	44	1.732	CC..09T308/CC..3252	SKCP343	MS1156	SRS3
1144430	KM32TSSCLCR12	35	1.378	22	.866	44	1.732	CC..120408/CC..432	SKCP453	MS1158	SRS4
	left hand										
1144417	KM32TSSCLCL09	35	1.378	22	.866	44	1.732	CC..09T308/CC..3252	SKCP343	MS1156	SRS3
1144434	KM32TSSCLCL12	35	1.378	22	.866	44	1.732	CC..120408/CC..432	SKCP453	MS1158	SRS4



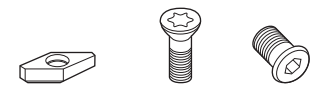
■ SDJC 93°



order number	catalog number	L1		F		gage insert	shim	insert screw	shim screw
		mm	in	mm	in				
1144422	KM32TSSDJCR11	35	1.378	22	.866	DC..11T308/DC..3252	SKDP343	MS1156	SRS3
1144427	KM32TSSDJCL11	35	1.378	22	.866	DC..11T308/DC..3252	SKDP343	MS1156	SRS3

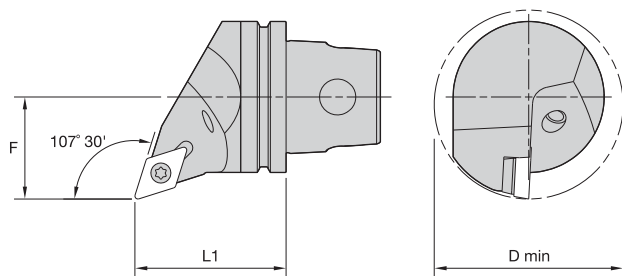


■ SDNC 62° 30'

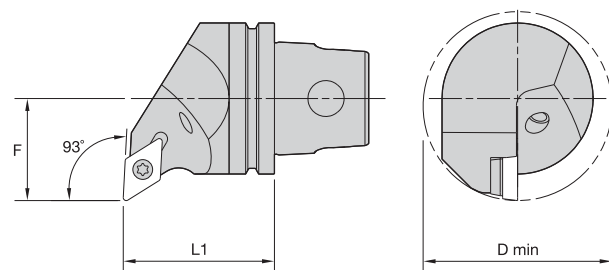


order number	catalog number	L1		F		gage insert	shim	insert screw	shim screw
		mm	in	mm	in				
1144424	KM32TSSDNCN11	35	1.378	0	.000	DC..11T308/DC..3252	SKDP343	MS1156	SRS3

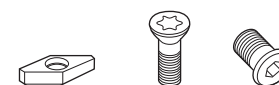


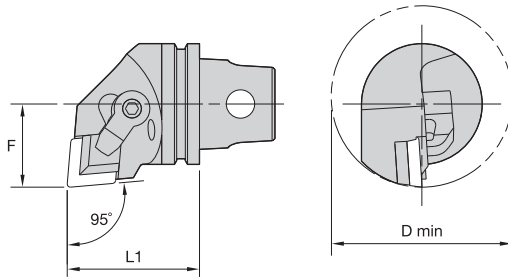

**■ SDQC 107° 30'**

order number	catalog number	L1		F		D min		gage insert	shim	insert screw	shim screw
		mm	in	mm	in	mm	in				
1144423	right hand	35	1.378	22	.866	44	1.732	DC..11T308/DC..3252	SKDP343	MS1156	SRS3
	KM32TSSDQCR11										
1144428	left hand	35	1.378	22	.866	44	1.732	DC..11T308/DC..3252	SKDP343	MS1156	SRS3
	KM32TSSDQCL11										

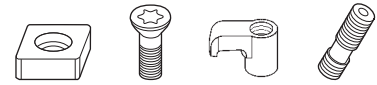

**■ SDUC 93°**

order number	catalog number	L1		F		D min		gage insert	shim	insert screw	shim screw
		mm	in	mm	in	mm	in				
1144425	right hand	35	1.378	22	.866	44	1.732	DC..11T308/DC..3252	SKDP343	MS1156	SRS3
	KM32TSSDUCR11										
1144429	left hand	35	1.378	22	.866	44	1.732	DC..11T308/DC..3252	SKDP343	MS1156	SRS3
	KM32TSSDUCL11										



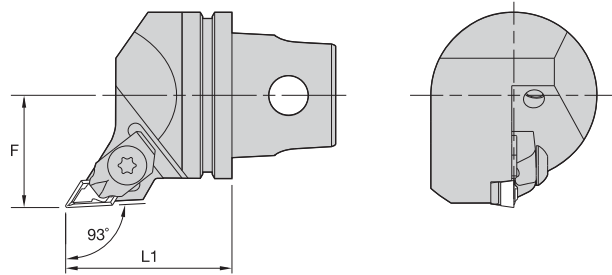


■ CCLP 95°



order number	catalog number	L1		F		D min		gage insert	shim	shim screw	clamp	clamp screw
		mm	in	mm	in	mm	in					
1091617	KM32TSCCLPL12	35	1.378	22	.866	48	1.890	CP..120308/CP.422	SM891	MS109	CKM37	STCM11

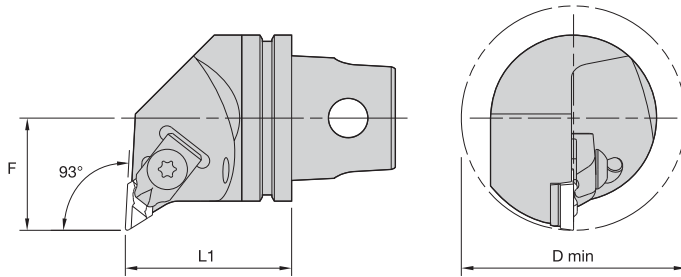
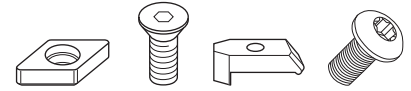
NOTE: Chipbreakers must be ordered separately. Chipbreaker catalog number is CBD-16N.



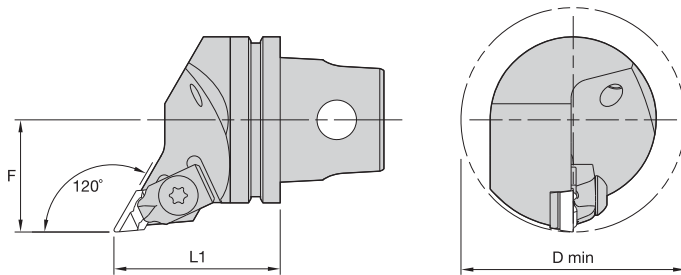
■ NKJC 93°



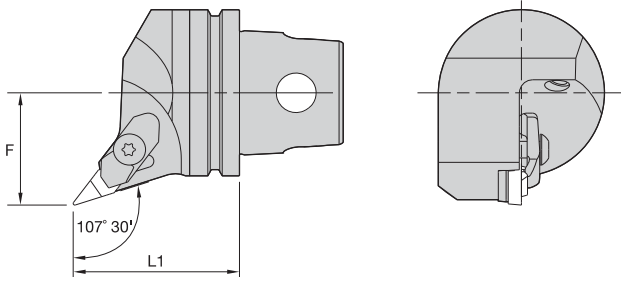
order number	catalog number	L1		F		gage insert	shim	shim screw	clamp	clamp screw
		mm	in	mm	in					
1019508	KM32TSNKJCR11	35	1.378	22	.866	KC..110304R08/NP..51R	SM885	MS959	CM71	MS1220
1019565	KM32TSNKJCL11	35	1.378	22	.866	KC..110304L08/NP..51L	SM886	MS959	CM79	MS1220


**■ NKUC 93°**


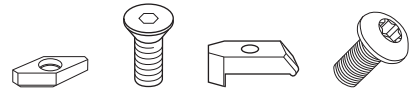
order number	catalog number	L1		F		D min		gage insert	shim	shim screw	clamp	clamp screw
		mm	in	mm	in	mm	in					
		<b>right hand</b>										
1019509	KM32TSNKUCR11	35	1.378	22	.866	44	1.732	KC..110304L08/NP..51L	SM886	MS959	CM68	MS1220
		<b>left hand</b>										
1019566	KM32TSNKUCL11	35	1.378	22	.866	44	1.732	KC..110304R08/NP..51R	SM885	MS959	CM68	MS1220


**■ NKXC 120°**

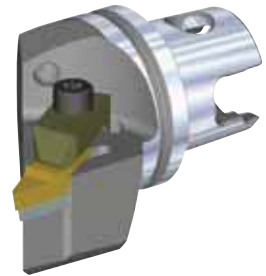
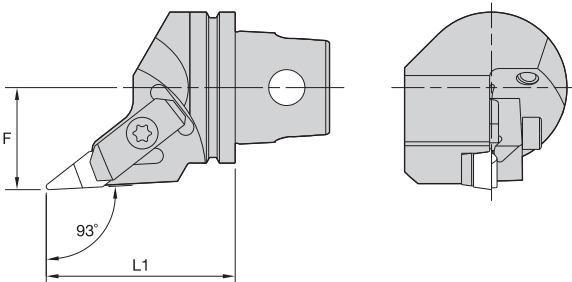

order number	catalog number	L1		F		D min		gage insert	shim	shim screw	clamp	clamp screw
		mm	in	mm	in	mm	in					
		<b>left hand</b>										
1019567	KM32TSNKXCL11	35	1.378	22	.866	44	1.732	KC..110304R08/NP..51R	SM885	MS959	CM68	MS1220



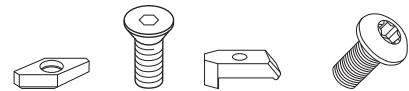
■ NVHB 107° 30'



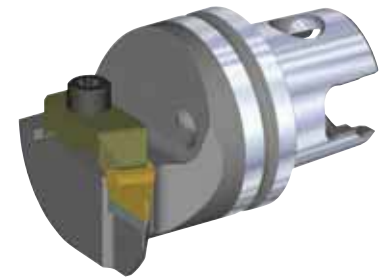
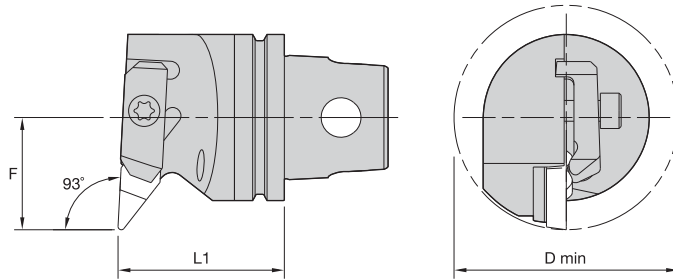
order number	catalog number	L1		F		gage insert	shim	shim screw	clamp	clamp screw
		mm	in	mm	in					
	right hand									
1144421	KM32TSNVHBR11	35	1.378	22	.866	VBMR110304/VBMR221	SM813	MS959	CM158	MS1375



■ NVJC 93°



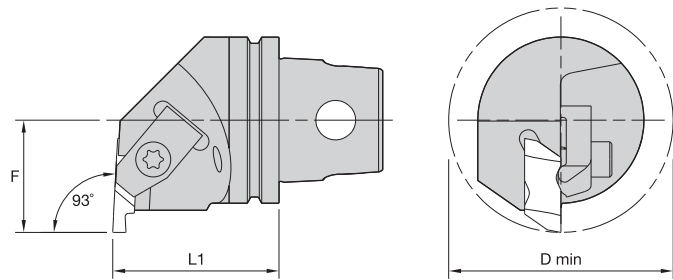
order number	catalog number	L1		F		gage insert	shim	shim screw	clamp	clamp screw
		mm	in	mm	in					
	right hand									
1144437	KM32TSNVJCR16	47	1.850	22	.866	VCGR160408/VPGR332	SM812	MS959	CM113	MS1489PKG
	left hand									
1144440	KM32TSNVJCL16	47	1.850	22	.866	VCGR160408/VPGR332	SM812	MS959	CM114	MS1489PKG



■ NVUC 93°



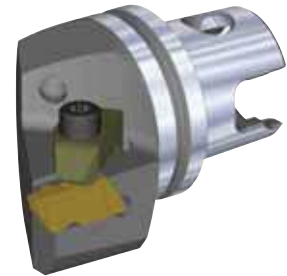
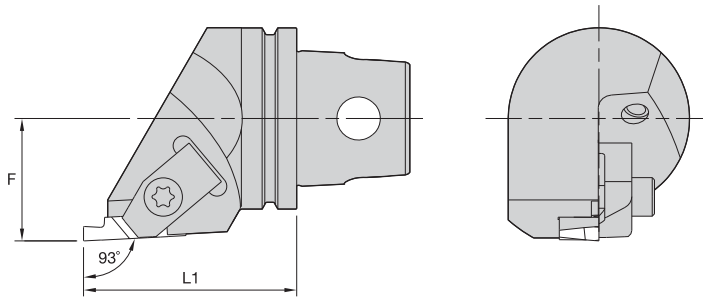
order number	catalog number	L1		F		D min		gage insert	shim	shim screw	clamp	clamp screw
		mm	in	mm	in	mm	in					
	right hand											
1091627	KM32TSNVUCR16	35	1.378	27	1.063	54	2.126	VCGR160408/VPGR332	SM812	MS959	CM113	MS1489
	left hand											
1019564	KM32TSNVUCL16	35	1.378	27	1.063	54	2.126	VCGR160408/VPGR332	SM812	MS959	CM114	MS1489



■ NE 93°



order number	catalog number	L1		F		D min		gage insert	clamp	clamp screw
		mm	in	mm	in	mm	in			
	right hand									
1019406	KM32TSNER2	35	1.378	22	.866	44	1.732	NG2L	CM75	MS1488
1019410	KM32TSNER3	35	1.378	22	.866	44	1.732	NG3L	CM73	MS1489

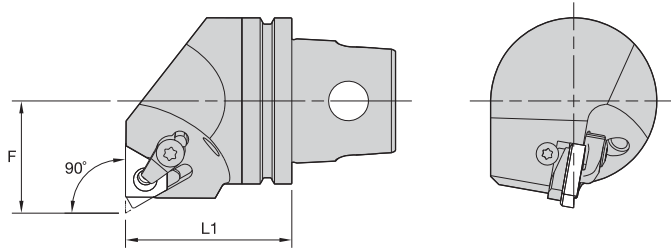
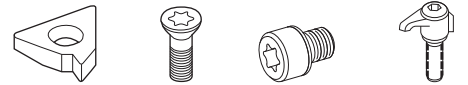


■ NS 90°

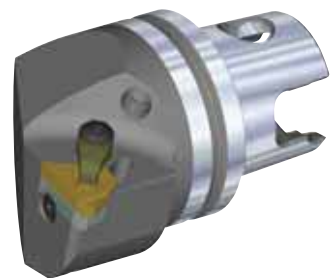
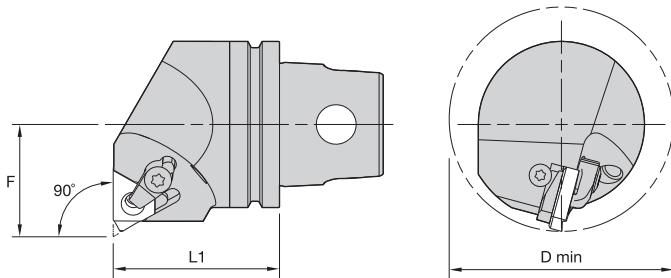
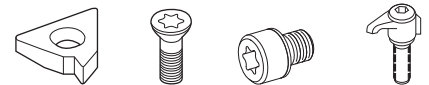
order number	catalog number	L1		F		gage insert	clamp	clamp screw
		mm	in	mm	in			
1019407	right hand KM32TSNSR2	35	1.378	22	.866	NG2R	CM74	MS1488
1019411	KM32TSNSR3 left hand	40	1.575	22	.866	NG3R	CM72	MS1489
1019409	KM32TSNSL2	35	1.378	22	.866	NG2L	CM75	MS1488
1019413	KM32TSNSL3	40	1.575	22	.866	NG3L	CM73	MS1489





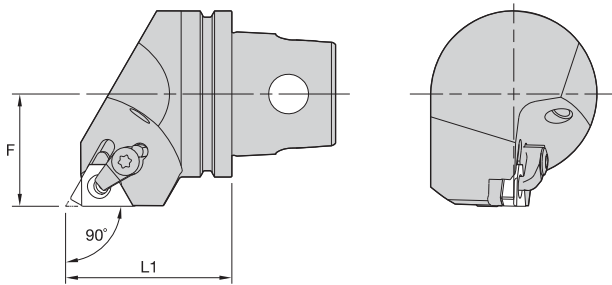

**■ LSE-E 90° • External Only**


order number	catalog number	L1		F		gage insert	shim	insert screw	shim screw	clamp assembly
		mm	in	mm	in					
1144372	KM32TSLSEL16E	35	1.378	22	.866	LT16ER	SMYE3	SSA3T	SSY3T	CKC3


**■ LSE-N 90° • Internal Only**


order number	catalog number	L1		F		D min		gage insert	shim	insert screw	shim screw	clamp assembly
		mm	in	mm	in	mm	in					
1144357	KM32TSLSER16N	35	1.378	22	.866	44	1.732	LT16NR	SMYI3	SSA3T	SSY3T	CKC3

NOTE: Cutting units are supplied with insert screw and clamp assembly. However, tools are designed to use either the insert screw or the clamp assembly, not both.

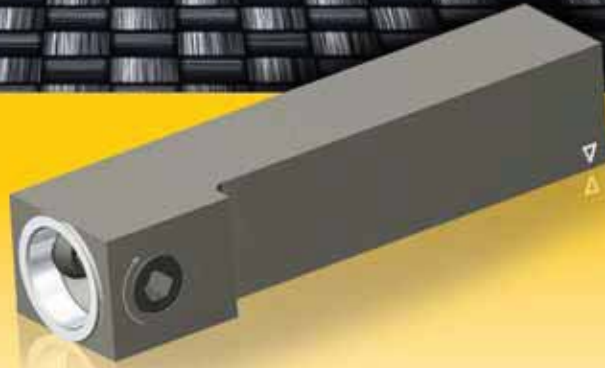


■ LSS 90°



order number	catalog number	L1		F		gage insert	shim	insert screw	shim screw	clamp assembly
		mm	in	mm	in					
	right hand									
1019298	KM32TSLSSR16	35	1.378	22	.866	LT16ER	SMYE3	SSA3T	SSY3T	CKC3
	left hand									
1019299	KM32TSLSSL16	35	1.378	22	.866	LT16EL	SMYI3	SSA3T	SSY3T	CKC3

NOTE: Cutting units are supplied with insert screw and clamp assembly. However, tools are designed to use either the insert screw or the clamp assembly, not both.



# KM Micro<sup>TM</sup> and KM<sup>TM</sup> Mini

**The most economical modular quick-change tooling system available.**

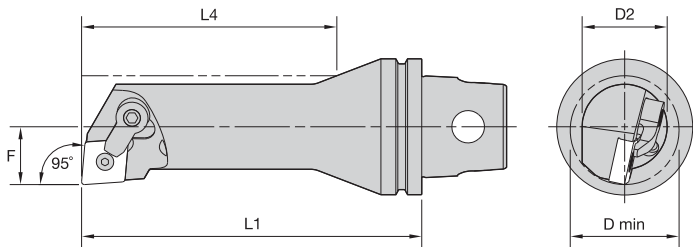
The KM Micro and KM Mini couplings offer a very rigid joint with a high degree of repeatability while maintaining a very compact envelope. This permits a high degree of versatility without sacrificing cutting performance.

- Reduce downtime, increase productivity.
- Replaces conventional square-shank tooling.
- No machine modifications required.
- KM Mini is ideal for machines up to 30 hp (22kW).

Experience the advantages at your Authorized Kennametal Distributor or at [www.kennametal.com](http://www.kennametal.com).

[www.kennametal.com](http://www.kennametal.com)



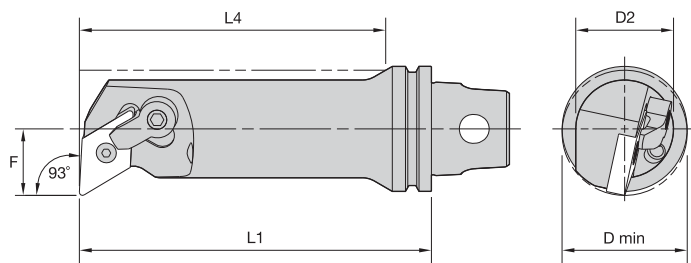


■ MCLN 95°

order number	catalog number	D2		D min		F		L4		L1		gage insert
		mm	in	mm	in	mm	in	mm	in	mm	in	
		right hand										
1023729	KM32TSS25EMCLNR12	25	.98	32	1.26	17	.669	58	2.28	70	2.756	CN..120408/CN..432
1023866	KM32TSS25GMCLNR12	25	.98	32	1.26	17	.669	75	2.95	90	3.543	CN..120408/CN..432
		left hand										
1023841	KM32TSS25EMCLNL12	25	.98	32	1.26	17	.669	58	2.28	70	2.756	CN..120408/CN..432
1023868	KM32TSS25GMCLNL12	25	.98	32	1.26	17	.669	75	2.95	90	3.543	CN..120408/CN..432

■ Spare Parts

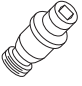


catalog number	lock pin                  clamp                  clamp screw		
	lock pin	clamp	clamp screw
	right hand		
KM32TSS25EMCLNR12	KLM43	CKM20LP	STCM11
KM32TSS25GMCLNR12	KLM43	CKM20LP	STCM11
	left hand		
KM32TSS25EMCLNL12	KLM43	CKM20LP	STCM11
KM32TSS25GMCLNL12	KLM43	CKM20LP	STCM11

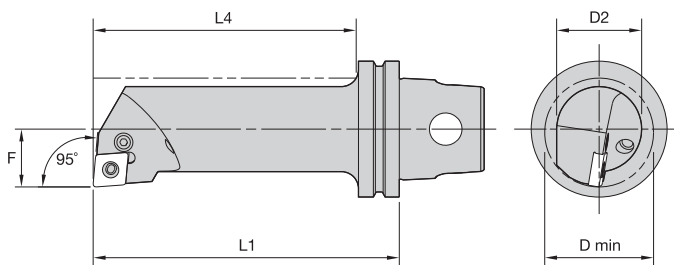


■ MDUN 93°

order number	catalog number	D2		D min		F		L4		L1		gage insert
		mm	in	mm	in	mm	in	mm	in	mm	in	
		right hand										
1023730	KM32TSS25EMDUNR15	25	.98	32	1.26	17	.669	58	2.28	70	2.756	DN..150408/DN..432
1023938	KM32TSS25GMDUNR15	25	.98	32	1.26	17	.669	75	2.95	90	3.543	DN..150408/DN..432

■ Spare Parts

catalog number	 lock pin  clamp  clamp screw		
	right hand		
KM32TSS25EMDUNR15	KLM43	CKM20LP	STCM11
KM32TSS25GMDUNR15	KLM43	CKM20LP	STCM11



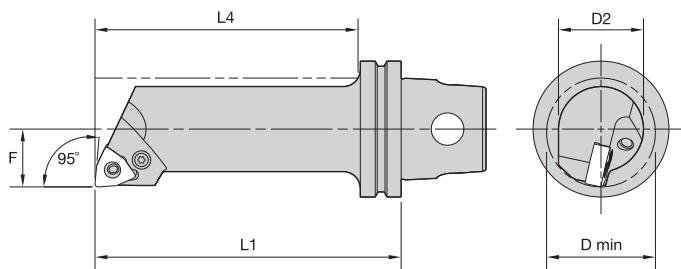
■ PCLN 95°

order number	catalog number	D2		D min		F		L4		L1		gage insert
		mm	in	mm	in	mm	in	mm	in	mm	in	
1671735	right hand	25	.984	32	1.260	17	.669	80	3.150	90	3.543	CN..090308/CN..322
	left hand											
1671736	KM32TSS25GPCLNL09	25	.984	32	1.260	17	.669	80	3.132	90	3.543	CN..090308/CN..322

■ Spare Parts

catalog number	lever screw	toggle lever
right hand KM32TSS25GPCLNR09	514.011	511.013
left hand KM32TSS25GPCLNL09	514.011	511.013





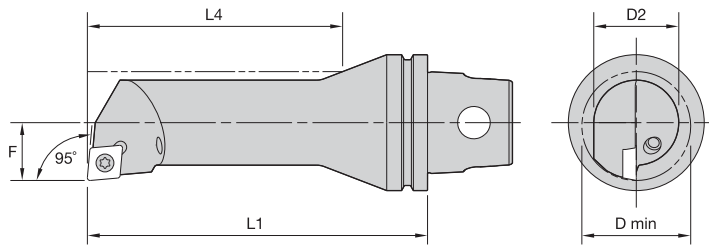


■ PWLN 95°

order number	catalog number	D2		D min		F		L4		L1		gage insert
		mm	in	mm	in	mm	in	mm	in	mm	in	
		right hand										
1695783	KM32TSS25GPWLN06	25	.984	32	1.260	17	.669	80	3.150	90	3.543	WN..060408/WN..332
		left hand										
1695784	KM32TSS25GPWLN06	25	.984	32	1.260	17	.669	80	3.150	90	3.543	WN..060408/WN..332

■ Spare Parts

catalog number	 lever screw	 toggle lever
	right hand	
KM32TSS25GPWLN06	514.112	511.030
	left hand	
KM32TSS25GPWLN06	514.112	511.030



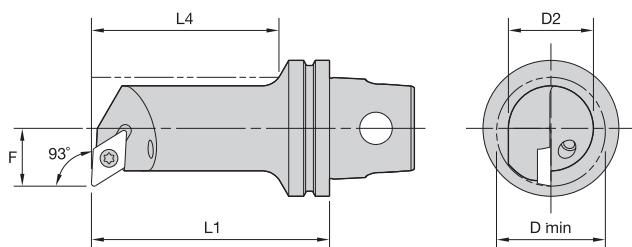
■ SCLP 95°

order number	catalog number	D2		D min		F		L4		L1		gage insert
		mm	in	mm	in	mm	in	mm	in	mm	in	
right hand												
1144614	KM32TSS10CSCLPR06	10	.39	13	.51	7	.276	35	1.38	50	1.969	CP..060204/CP..2151
1144616	KM32TSS12DSCLPR06	12	.47	16	.63	9	.354	43	1.70	60	2.362	CP..060204/CP..2151
1144618	KM32TSS16ESCLPR09	16	.63	20	.79	11	.433	56	2.20	70	2.756	CP..09T308/CP..3252
1144645	KM32TSS20FSCLPR09	20	.79	25	.98	13	.512	60	2.36	80	3.150	CP..09T308/CP..3252
1144647	KM32TSS25GSCLPR09	25	.98	32	1.26	17	.669	75	2.95	90	3.543	CP..09T308/CP..3252
left hand												
1144615	KM32TSS10CSCLPL06	10	.39	13	.51	7	.276	35	1.38	50	1.969	CP..060204/CP..2151
1144617	KM32TSS12DSCLPL06	12	.47	16	.63	9	.354	43	1.70	60	2.362	CP..060204/CP..2151
1144619	KM32TSS16ESCLPL09	16	.63	20	.79	11	.433	56	2.20	70	2.756	CP..09T308/CP..3252
1144646	KM32TSS20FSCLPL09	20	.79	25	.98	13	.512	60	2.36	80	3.150	CP..09T308/CP..3252
1144745	KM32TSS25ESCLPL09	25	.98	32	1.26	17	.669	58	2.28	70	2.756	CP..09T308/CP..3252

■ Spare Parts



catalog number	insert screw
right hand	
KM32TSS10CSCLPR06	MS1153
KM32TSS12DSCLPR06	MS1153
KM32TSS16ESCLPR09	MS1155
KM32TSS20FSCLPR09	MS1155
KM32TSS25GSCLPR09	MS1155
left hand	
KM32TSS10CSCLPL06	MS1153
KM32TSS12DSCLPL06	MS1153
KM32TSS16ESCLPL09	MS1155
KM32TSS20FSCLPL09	MS1155
KM32TSS25ESCLPL09	MS1155



### ■ SDUP 93°

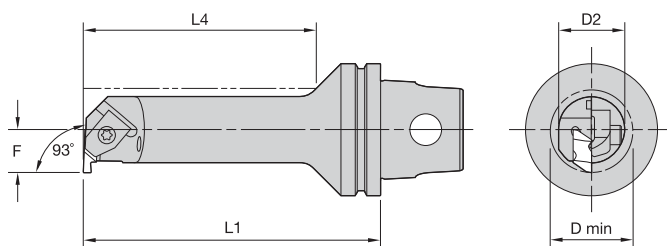
order number	catalog number	D2		D min		F		L4		L1		gage insert
		mm	in	mm	in	mm	in	mm	in	mm	in	
right hand												
1020682	KM32TSS12DSDUPR07	12	.47	16	.63	9	.354	42	1.65	60	2.362	DP..070204/DP..2151
1020724	KM32TSS16ESDUPR07	16	.63	20	.79	11	.433	56	2.20	70	2.756	DP..070204/DP..2151
1144657	KM32TSS20FSDUPR07	20	.79	25	.98	13	.512	60	2.36	80	3.150	DP..070204/DP..2151
1144743	KM32TSS25ESDUPR11	25	.98	32	1.26	17	.669	58	2.28	70	2.756	DP..11T308/DP..3252
left hand												
1020683	KM32TSS12DSDUPL07	12	.47	16	.63	9	.354	42	1.65	60	2.362	DP..070204/DP..2151
1020725	KM32TSS16ESDUPL07	16	.63	20	.79	11	.433	56	2.20	70	2.756	DP..070204/DP..2151
1144658	KM32TSS20FSDUPL07	20	.79	25	.98	13	.512	60	2.36	80	3.150	DP..070204/DP..2151
1144746	KM32TSS25ESDUPL11	25	.98	32	1.26	17	.669	58	2.28	70	2.756	DP..11T308/DP..3252

### ■ Spare Parts



catalog number	insert screw
right hand	
KM32TSS12DSDUPR07	MS1153
KM32TSS16ESDUPR07	MS1153
KM32TSS20FSDUPR07	MS1153
KM32TSS25ESDUPR11	MS1155
left hand	
KM32TSS12DSDUPL07	MS1153
KM32TSS16ESDUPL07	MS1153
KM32TSS20FSDUPL07	MS1153
KM32TSS25ESDUPL11	MS1155





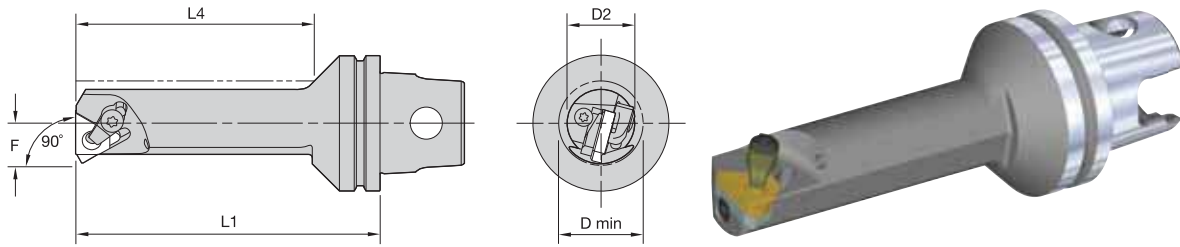


■ NE 93°

order number	catalog number	D2		D min		F		L4		L1		gage insert
		mm	in	mm	in	mm	in	mm	in	mm	in	
1020727	right hand	12	.47	19	.728	11	.433	42	1.654	60	2.362	NG2L
	KM32TSS12DNER2											
1020728	left hand	12	.47	19	.728	11	.433	42	1.654	60	2.362	NG2R
	KM32TSS12DNEL2											
1144713	KM32TSS20FNEL2	20	.79	25	.984	13	.512	60	2.362	80	3.150	NG2R

■ Spare Parts

catalog number	clamp	clamp screw
right hand	 <b>CM147</b>	 <b>MS1488</b>
KM32TSS12DNER2		
left hand	<b>CM146</b>	<b>MS1488</b>
KM32TSS12DNEL2		
KM32TSS20FNEL2	<b>CM74</b>	<b>MS1488</b>



■ LSE 90°

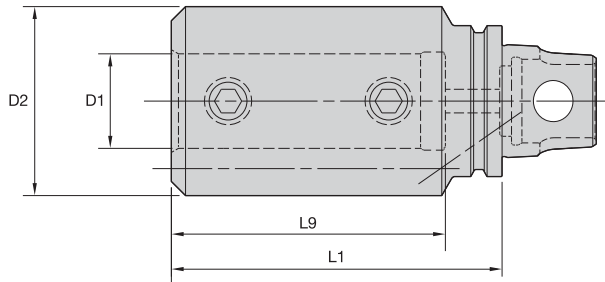
order number	catalog number	D2		D min		F		L4		L1		gage insert
		mm	in	mm	in	mm	in	mm	in	mm	in	
		right hand										
1020454	KM32TSS10CLSER11	10	.39	13	.51	7	.276	35	1.38	50	1.969	LT11NR
1020456	KM32TSS12DLSER11	12	.47	16	.63	9	.354	42	1.65	60	2.362	LT11NR
1144724	KM32TSS16ELSER16	16	.63	20	.79	11	.433	56	2.21	70	2.756	LT16NR
1020458	KM32TSS20FLSER16	20	.79	25	.98	13	.512	60	2.36	80	3.150	LT16NR
		left hand										
1020461	KM32TSS25GLSEL16	25	.98	32	1.26	17	.669	75	2.95	90	3.543	LT16NL

■ Spare Parts

catalog number				
	shim	insert screw	shim screw	clamp assembly
	right hand			
KM32TSS10CLSER11	—	SSN2T	—	—
KM32TSS12DLSER11	—	SSN2T	—	—
KM32TSS16ELSER16	—	SSA3T	—	—
	left hand			
KM32TSS20FLSER16	SMYI3	SSA3T	SSY3T	CKC3
KM32TSS25GLSEL16	SMYE3	SSA3T	SSY3T	CKC3

NOTE: Items listed without a shim are designed for a 1.5° inclination angle. Cutting units are supplied with insert screw and clamp assembly. However, tools are designed to use either the insert screw or the clamp assembly, not both.



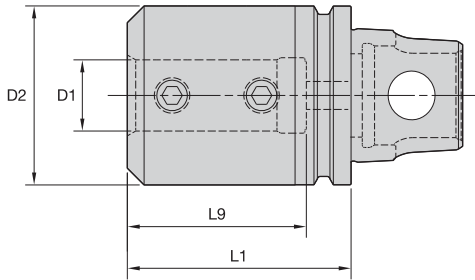

**■ BA • Internal and External Coolant • Metric**


order number	catalog number	D1	D2	L1	L9	clamp screw	wrench size clamp screw	Nm
1144729	KM32TSBA06045M	6	40	45	36	MS1210	2.5mm	4
1144730	KM32TSBA08045M	8	40	45	36	MS1210	2.5mm	4
1144544	KM32TSBA10055M	10	40	55	48	MS1211	4mm	18
1144545	KM32TSBA12060M	12	40	60	52	MS1211	4mm	15
1144546	KM32TSBA16065M	16	40	65	55	MS1212	5mm	34
1144547	KM32TSBA20070M	20	40	70	58	MS1212	5mm	35

**■ BA • Internal and External Coolant • Inch**


order number	catalog number	D1	D2	L1	L9	clamp screw	wrench size clamp screw	ft. lbs.
1020175	KM32TSBA06217	3/8	1.57	2.165	1.89	S843	1/8	8
1020176	KM32TSBA08236	1/2	1.58	2.362	2.05	S852	5/32	15
1020177	KM32TSBA10256	5/8	1.58	2.559	2.17	S862	3/16	25
1020178	KM32TSBA12276	3/4	1.57	2.756	2.28	S862	3/16	25

NOTE: Do not overtighten clamp screw; use torque recommendations above.  
 Supplied with clamp screw.  
 Clamp screw wrench not included.



■ BAI • Internal Coolant Only • Metric

order number	catalog number	D1	D2	L1	L9	wrench size clamp screw	Nm
1279245	KM32TSBAI25070M	25	50	70	58	5mm	25

■ Spare Parts • Metric

catalog number	clamp screw
KM32TSBAI25070M	MS1212



■ BAI • Internal Coolant Only • Inch

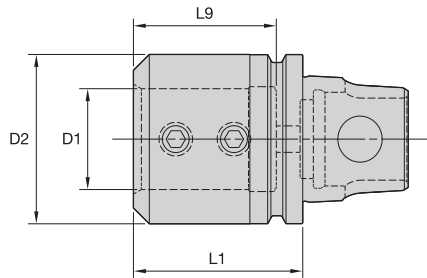
order number	catalog number	D1	D2	L1	L9	wrench size clamp screw	ft. lbs.
1722930	KM32TSBAI04126	1/4	1.26	1.260	1.06	3/32	2
1723301	KM32TSBAI06126	3/8	1.26	1.260	1.06	1/8	5
1723302	KM32TSBAI08157	1/2	1.26	1.575	1.26	1/8	8
1723303	KM32TSBAI10185	5/8	1.26	1.850	1.58	1/8	8
1021122	KM32TSBAI16276	1	1.97	2.756	2.28	3/16	15

■ Spare Parts • Inch

catalog number	clamp screw
KM32TSBAI04126	S836PKG
KM32TSBAI06126	S841PKG
KM32TSBAI08157	S841PKG
KM32TSBAI10185	—
KM32TSBAI16276	S862



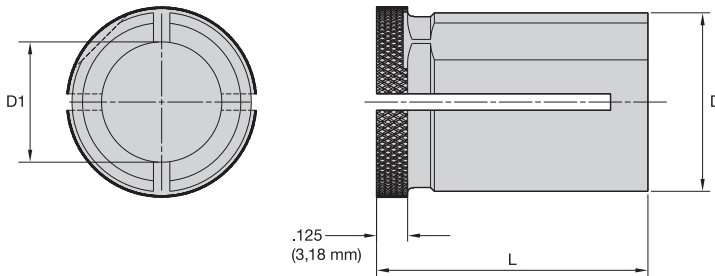
NOTE: Do not overtighten clamp screw; use torque recommendations above.  
Supplied with clamp screw.  
Clamp screw wrench not included.



■ HDB • Internal Coolant Only • Inch

order number	catalog number	D1	D2	L1	L9
1021167	KM32TSHDB6126	.750	1.26	1.260	1.06

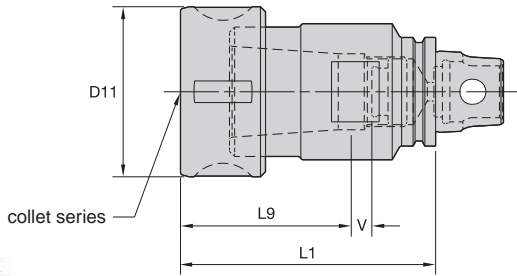
NOTE: For bushings, see page A251.



■ HDB • Inch

order number	catalog number	D1	D	L
1272797	HDB6250	.250	.750	1.120
1272798	HDB6375	.375	.750	1.120
1272799	HDB6500	.500	.750	1.120
1272800	HDB6625	.625	.750	1.120

- Tremendous Grip (3:1 advantage).
- Balanced by design.



■ TG • Round Nut

order number	catalog number	CST collet series	D11		L1		L9		V	
			mm	in	mm	in	mm	in	mm	in
1144185	KM32TSTGB075075M	TG75	50	1.97	75	2.953	53,0	2.09	2	.08

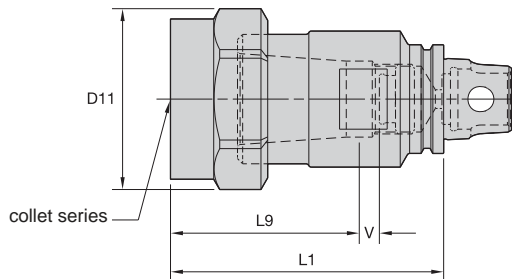
■ Spare Parts

catalog number	round assembly	HSW	Nm		stop screw	wrench size stop screw
			Nm	ft. lbs.		
KM32TSTGB075075M	LNA075M	HSW45M	136	100	SS081041G	4 mm & 5/32

NOTE: Collet must be loaded into locknut first. Before loading into the chuck body, insert the cutting tool, then tighten to the recommended tightening torque.  
 Collet chuck technical section, see page M98.  
 Supplied with locknut and stop screw.  
 Locknut wrench must be ordered separately.  
 Interchangeable locknuts, coolant-style locknuts, and coolant disks are available and must be ordered separately; see pages L16–L17.  
 Stop screw coolant caps are available and must be ordered separately; see pages L34–L35.  
 Balanceable/Interchangeable locknuts are available and must be ordered separately; see page L16.  
 TG standard straight-bore collets, see page J10.  
 TG tap collets, see page J10.

(continued)

(TG continued)



TG collet series	Collet Capacity			
	mm		inch	
	min	max	min	max
TG75	2,6	20,0	3/64	3/4

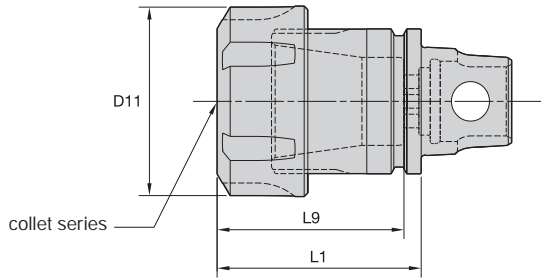
**■ TG • Hex Nut**

order number	catalog number	CST collet series	D11		L1		L9		V	
			mm	in	mm	in	mm	in	mm	in
1024232	KM32TSTGB075316	TG75	53	2.09	80	3.161	58,0	2.28	2	.08

**■ Spare Parts**


catalog number	locknut	wrench	Nm	ft. lbs.	stop screw	wrench size stop screw
KM32TSTGB075316	NPA075	OEW188	136	100	SS081041G	4 mm & 5/32

- Grip (2:1 advantage).
- Balanced by design.



ER collet series	Collet Capacity			
	mm		inch	
	min	max	min	max
ER25	1,0	16,0	.02	.63
ER32	1,0	20,0	.08	.81

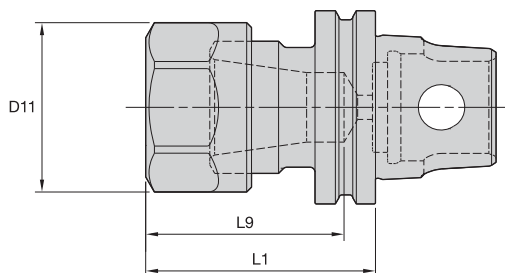
■ ER • Round Nut



order number	catalog number	CST collet series	D11		L1		L9		locknut	wrench	Nm	ft. lbs.
			mm	in	mm	in	mm	in				
1013521	KM32TSER25045M	ER25	42	1.654	45	1.772	41,2	1.622	LNSER25M	ER25WM	104	77
1013522	KM32ER3251	ER32	50	1.969	51	2.008	47,3	1.863	LNSER32M	ER32WM	136	100

(continued)

(ER continued)



ER collet series	Collet Capacity			
	mm		inch	
	min	max	min	max
ER16	0,5	10,0	.02	.40

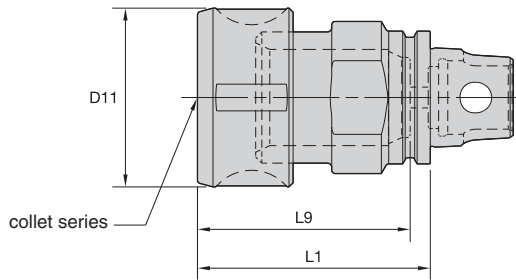
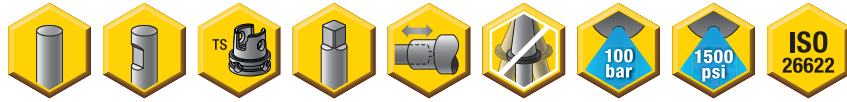
**■ ER • Hex Nut**

order number	catalog number	CST collet series	D11		L1		L9		locknut	wrench	straight collet torque (Nm)	straight collet torque (ft. lbs.)	counterbore collet torque (Nm)	counterbore collet torque (ft. lbs.)
			mm	in	mm	in	mm	in						
1013520	KM32TSER16036M	ER16	28	1.102	36	1.417	32,8	1.291			56	42	40	30

NOTE: Collet must be loaded into locknut first. Before loading into the chuck body, insert the cutting tool, then tighten to the recommended tightening torque.  
 Collet chuck technical section, see page M98.  
 Supplied with locknut and stop screw.  
 Locknut wrench must be ordered separately.  
 Interchangeable coolant-style locknuts and coolant disks are available and must be ordered separately; see pages L16–L17.  
 Stop screw coolant caps are available and must be ordered separately; see pages L34–L35.  
 ER standard straight-bore collets, see page J50.  
 ER tap collets, see pages J58–J59.  
 ER TCT tension-only tap collets, see page J60.



- Grip 1:1.
- Balanced by design.



KM32TS Shank Tools



DA collet series	Collet Capacity			
	mm		inch	
	min	max	min	max
200DA	1,0	10,0	.04	.39
180DA	3,0	20,0	.04	.75

■ DA • Round Nut

order number	catalog number	CST collet series	D11		L1		L9		V	
			mm	in	mm	in	mm	in	mm	in
1144184	KM32TSDA208060M	DA200	28	1.10	60	2.362	37	1.46	6,0	.24
1144190	KM32TSDA188056M	DA180	43	1.69	56	2.205	53	2.08	—	—

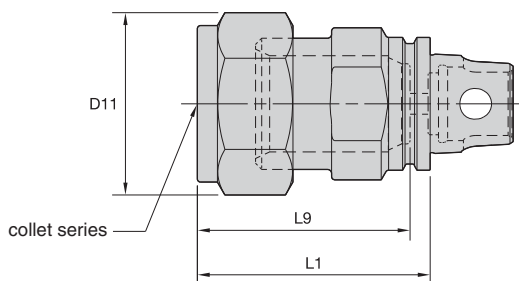
■ Spare Parts



catalog number	locknut	wrench	Nm	ft. lbs.	stop screw	wrench size stop screw
KM32TSDA208060M	LNA208RM	HSW25M	61	45	SS038031G	2 mm & 5/64
KM32TSDA188056M	LNA188M	HSW45M	136	100	—	—

(continued)

(DA continued)



DA collet series	Collet Capacity			
	mm		inch	
	min	max	min	max
200DA	1,0	10,0	.04	.39
180DA	3,0	20,0	.04	.75

### ■ DA • Hex Nut

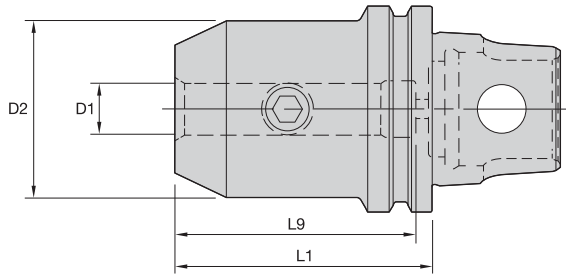
order number	catalog number	CST collet series	D11		L1		L9		V	
			mm	in	mm	in	mm	in	mm	in
1024325	KM32TSDA208236	DA200	29	1.15	60	2.362	35	1.38	8,0	.32
1145045	KM32TSDA188220	DA180	44	1.73	56	2.205	53	2.08	—	—
1024326	KM32TSDA188295	DA180	44	1.73	75	2.953	49	1.93	5,0	.20

### ■ Spare Parts

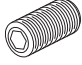


catalog number	locknut	wrench	Nm	ft. lbs.	stop screw	wrench size stop screw
KM32TSDA208236	NPA208	OEW100	54	40	SS038031G	2 mm & 5/64
KM32TSDA188220	NPA188	OEW225	102	75	—	—
KM32TSDA188295	NPA188	OEW150	102	75	SS081041G	4 mm & 5/32

NOTE: Tighten locknut to the recommended tightening torque.  
 Collet chuck technical section, see page M98.  
 Supplied with locknut and stop screw.  
 Locknut wrench must be ordered separately.  
 Stop screw coolant caps are available and must be ordered separately; see pages L34–L35.  
 DA standard straight-bore collets, see page J62.  
 DA non-pullout collets, see pages J65–J68.

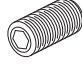


■ EM • Metric



order number	catalog number	D1	D2	L1	L9	clamp screw	wrench size clamp screw	Nm
1144187	KM32TSEM06040M	6	25	40	37,5	SS03M012	3mm	7
1144188	KM32TSEM08040M	8	28	40	37,5	SS03M014	4mm	15
1144191	KM32TSEM10045M	10	35	45	42,0	SS03M018	5mm	25
1144189	KM32TSEM12050M	12	42	50	47,0	SS03M023	6mm	35

■ EM • Inch

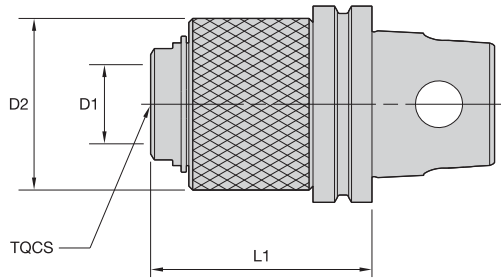


order number	catalog number	D1	D2	L1	L9	clamp screw	wrench size clamp screw	ft. lbs.
1145046	KM32TSEM038177	.375	1.00	1.772	1.63	ELS038031PKG	3/16	15
1024263	KM32TSEM050197	.500	1.38	1.969	1.84	ELS044038PKG	7/32	20

NOTE: Do not overtighten clamp screw; use torque recommendations above.  
Supplied with clamp screw.  
Clamp screw wrench not included.



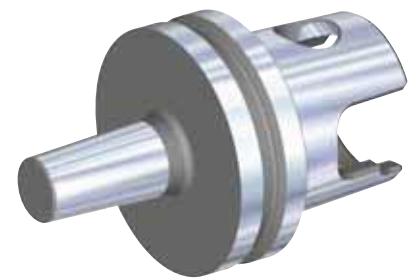
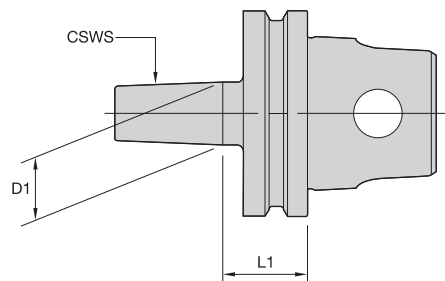
KM32TS Shank Tools



■ ST • Solid Tap Chuck

order number	catalog number	TQCS adapter size	D1		D2		L1	
			mm	in	mm	in	mm	in
1013514	KM32TSST140	1	19	.748	35	1.38	40,05	1.577

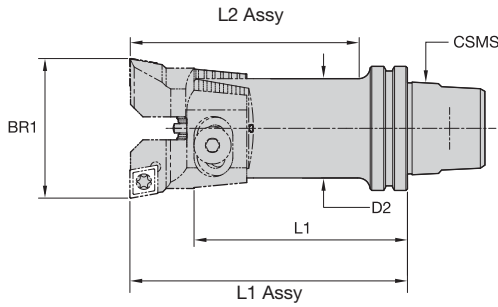
NOTE: Quick-change tap adapters are available and must be ordered separately; see page J76.



■ JT

order number	catalog number	CSWS system size	D1		L1	
			mm	in	mm	in
1021467	KM32TSJT1	1	10	.384	13,34	.525

- Preset on tool setter.
- Blade set included.



■ **RBHT-F • 0° Lead**



order number	catalog number	BR1 bore range		CSMS system size	D2		L1		L1 Assy		L2 Assy		blade screw	washer	pin
		mm	in		mm	in	mm	in	mm	in	mm	in			
3586519	KM32RBHT24	23,500-30,500	.9252-1.2008	KM32	20,0	.79	75,4	2.97	90,0	3.54	76,0	2.99	840.142.200	841.142.200	841.342.200
3586520	KM32RBHT30	29,500-40,000	1.1614-1.5748	KM32	25,0	.98	83,8	3.30	100,0	3.94	86,0	3.39	840.142.250	841.142.250	841.342.200

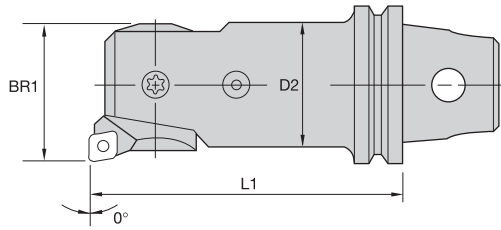
NOTE: Blade sets are ordered separately; see the Kennametal Innovations Master Catalog Cutting Tools 2013.

■ **Reference Insert Blade Sets**

BR1		90° lead blade sets	70° lead blade sets	90° lead simultaneous adjusting blade sets	90° lead split depth of cut blade
mm	inch				
23.500 - 30.500	.9252 - 1.2008	MB24RBHT06F	MB24RBHT06K	SYB24RBHT06F	SDB24RBHT06F
29.500 - 40.000	1.1614 - 1.5748	MB30RBHT06F	MB30RBHT06K	SYB30RBHT06F	SDB30RBHT06F

NOTE: Blade gage insert is CC..T21.51.

- 0,01mm (.0004") diameter adjustment.
- Insert holder included.

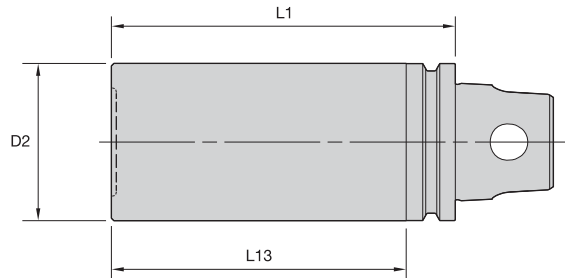


KM32 ModBORE • KM32TS Shank Tools

■ **FBHS • 0° Lead**

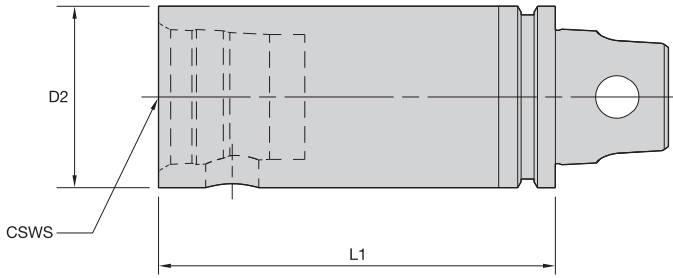
order number	catalog number	BR1 bore range		L1		D2		cartridge
		mm	in	mm	in	mm	in	
3586572	KM32FBHS24	23,9	.941	85,94	3.384	20	.79	R24FBHS06
3586573	KM32FBHS31	30,9	1.217	82,12	3.233	25	.98	R31FBHS06

NOTE: Blade gage insert is CC..T21.51.



■ **GB • Gage Bar**

order number	catalog number	L1		D2		L13	
		mm	in	mm	in	mm	in
1144559	KM32TSGB32070M	70,00	2.756	32,00	1.260	60,00	2.362



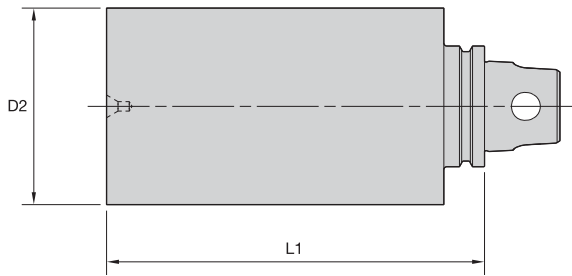
■ S • KM Extension



order number	catalog number	CSWS system size	D2		L1		wrench size actuation screw			spare parts package
			mm	in	mm	in	Nm	ft. lbs.		
1144258	KM32TSS32050M	KM32	32	1.260	50	1.969	5mm	8-11	6-8	KM32PKG3S
1144259	KM32TSS32070M	KM32	32	1.260	70	2.756	5mm	8-11	6-8	KM32PKG3S



KM32TS Shank Tools



■ BN • Blank

order number	catalog number	D2		L1		hardness range
		mm	in	mm	in	
1017544	KM32TSBN52100M	52	2.047	100	3.937	32-38 RW C
1021072	KM32TSBN52048M	52	2.047	48	1.890	32-38 RW C
1021073	KM32TSBN75048M	75	2.953	48	1.890	32-38 RW C