

INNOVATIONS
MASTER CATALOG

TOOLING SYSTEMS
2013

www.kennametal.com



GENERAL ENGINEERING

TRANSPORTATION



AEROSPACE & DEFENSE

EARTHWORKS

ENERGY

KM™ Mini • Quick Change Tooling System



Primary Application

The KM Mini coupling offers a very rigid joint with a high degree of repeatability while maintaining a very compact envelope. This permits a high degree of versatility without sacrificing cutting performance.

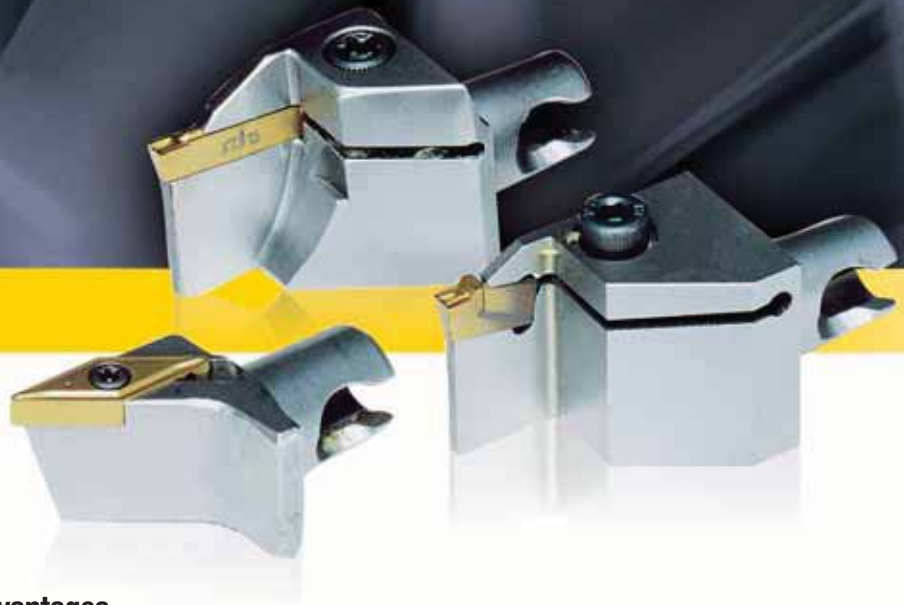
Features and Benefits

Features

- KM Mini is a compact quick-change tooling system.
- Face and taper surface contact between the cutting unit and clamping units.
- Mating taper clamping surfaces.
- Square shank adapters for standard tool blocks.

Functions

- The mechanism design consists of two components: the torque screw and the wedge nut.
- Precise and repeatable cutting edge position is in both directions of cut
- Maximum possible surface contact between the clamping mechanism and the cutting unit.
- Designed around a short 10:1 tapered shank.
- The taper is self-centering to promote easy tool loading and unloading.



Advantages

- Reduce downtime, increase productivity.
- Replaces conventional square-shank tooling.
- No machine modifications required.
- KM™ Mini is ideal for machines up to 30 hp (22 kW).

How Do Catalog Numbers Work?

Each character in our catalog number signifies a specific trait of that product. Use the following key columns and corresponding images to easily identify which attributes apply.



KM20NCM2020100



KM

Kennametal
Modular

KM™ Mini Quick Change
tooling system

20

System
Size

20 = 20 x 20mm
26 = 25 x 25mm

N

Version

N = Neutral
L = Left-hand version
R = Right-hand version

C

Clamping
Unit

M

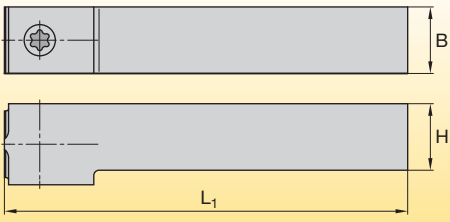
Control

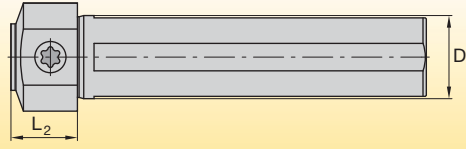
M = Manual
A = Automatic

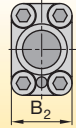
By referencing this easy-to-use guide, you can identify the correct product to meet your needs.

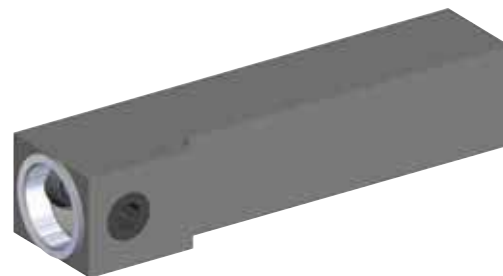
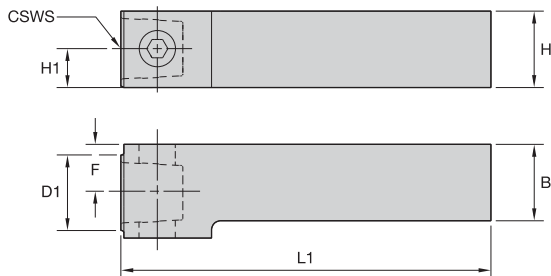


KM20NCM2020100

 	20	20	100
Type	Shank Height	Shank Width	Shank Length
Square Shank	<p>H = Shank height B = Shank width L₁ = Shank length</p> 		

SS	20	25
Type	Shank Diameter	Shoulder Length
SS = Square shank with shoulders	<p>D = Shank diameter L₂ = Shoulder length</p> 	

SF	27
Type	Flange Width
<p>SF = Range mount SEF = Extended flange mount</p>	<p>B₂ = Flange width</p> 



■ R/L CM • Metric

order number	catalog number	CSWS system size	D1		L1		F		B		H		H1	
			mm	mm	in	mm	in	mm	in	mm	in	mm	in	
	right hand													
3482938	KM20RCM2020100	KM20	20	100	3.937	13	.492	20	.787	20	.787	10	.413	
	left hand													
3482939	KM20LCM2020100	KM20	20	100	3.937	13	.492	20	.787	20	.787	10	.413	

■ R/L CM • Inch

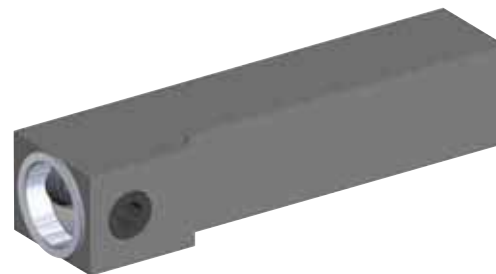
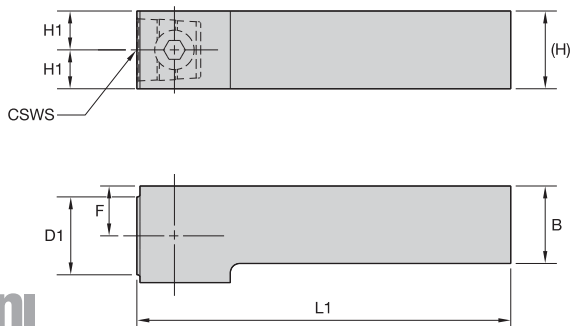
order number	catalog number	CSWS system size	D1		L1		F		B		H		H1	
			mm	mm	in	mm	in	mm	in	mm	in	mm	in	
	right hand													
2385942	KM25RCM16382	KM25	25	97	3.819	16	.630	25	1.000	25	1.000	13	.508	
2386034	KM25RCM16482	KM25	25	122	4.819	16	.630	25	1.000	25	1.000	13	.508	
	left hand													
2386033	KM25LCM16382	KM25	25	97	3.819	16	.630	25	1.000	25	1.000	13	.508	
2265206	KM25LCM16482	KM25	25	122	4.819	16	.630	25	1.000	25	1.000	13	.508	

■ Spare Parts



catalog number	spare parts package	wrench size actuation screw	Nm	ft. lbs.
right hand				
KM20RCM2020100	KM20NAPKG	5mm	19-22	14-16
KM25RCM16382	KM25NAPKG	6mm	34-40	25-30
KM25RCM16482	KM25NAPKG	6mm	34-40	25-30
left hand				
KM20LCM2020100	KM20NAPKG	5mm	19-22	14-16
KM25LCM16382	KM25NAPKG	6mm	34-40	25-30
KM25LCM16482	KM25NAPKG	6mm	34-40	25-30

NOTE: For torque wrench, see page L52–L53.



■ NCM • Metric

order number	catalog number	CSWS system size	D1		L1	F		H		H1		B	
			mm	mm	in	mm	in	mm	in	mm	in	mm	in
2277879	KM25NCM2525120	KM25	25	120	4.724	16	.630	25	.984	13	.492	25	.984

■ NCM • Inch

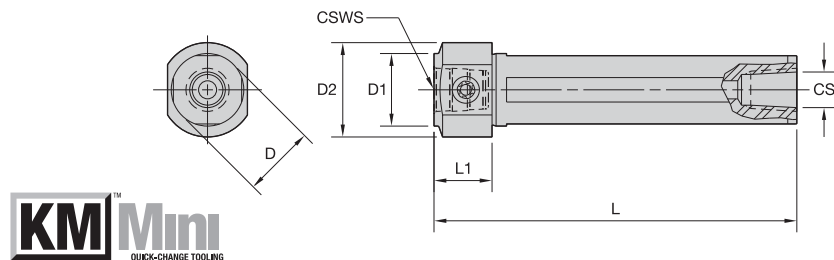
order number	catalog number	CSWS system size	D1		L1	F		H		H1		B	
			mm	mm	in	mm	in	mm	in	mm	in	mm	in
3482940	KM20NCM12352	KM20	20	89	3.516	13	.493	19	.750	10	.375	19	.750

■ Spare Parts



catalog number	spare parts package	wrench size actuation screw		Nm	ft. lbs.
		mm	in		
KM20NCM12352	KM20NAPKG	5mm		19-22	14-16
KM25NCM2525120	KM25NAPKG	6mm		34-40	25-30

NOTE: For torque wrench, see page L52–L53.



■ **NCM-SS • Round Shank • Metric**

order number	catalog number	CSWS system size	D1 mm	D mm	D2 mm	L mm	L1 mm	CS
3483039	KM2520NCMSS2025	KM2520	25	20	.787	28	1.102	90 3.543 25 .984
2594730	KM3225NCMSS2525	KM3225	32	25	.984	36	1.417	90 3.543 25 .984
2656549	KM3225NCMSS3225	KM3225	32	32	1.260	44	1.732	90 3.543 25 .984
2656550	KM3225NCMSS4025	KM3225	32	40	1.575	50	1.969	90 3.543 25 .984

■ **Spare Parts**



catalog number	spare parts package	wrench size actuation screw	Nm	ft. lbs.
KM2520NCMSS2025	KM2520NRPKG	5mm	19-22	14-16
KM3225NCMSS2525	KM3225NRPKG	6mm	34-40	25-30
KM3225NCMSS3225	KM3225NRPKG	6mm	34-40	25-30
KM3225NCMSS4025	KM3225NRPKG	6mm	34-40	25-30

■ **NCM-SS • Round Shank • Inch**

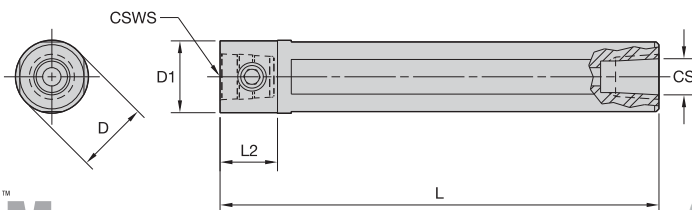
order number	catalog number	CSWS system size	D1 mm	D mm	D2 mm	L mm	L1 mm	CS
3483040	KM2520NCMSS12098	KM2520	25	19	.750	28	1.102	90 3.543 25 .984
2594729	KM3225NCMSS16098	KM3225	32	25	1.000	36	1.417	90 3.543 25 .984
2656547	KM3225NCMSS20098	KM3225	32	32	1.250	44	1.732	90 3.543 25 .984
2656548	KM3225NCMSS24098	KM3225	32	38	1.500	50	1.969	90 3.543 25 .984

■ **Spare Parts**



catalog number	spare parts package	wrench size actuation screw	Nm	ft. lbs.
KM2520NCMSS12098	KM2520NRPKG	5mm	19-22	14-16
KM3225NCMSS16098	KM3225NRPKG	6mm	34-40	25-30
KM3225NCMSS20098	KM3225NRPKG	6mm	34-40	25-30
KM3225NCMSS24098	KM3225NRPKG	6mm	34-40	25-30

NOTE: For torque wrench, see page L52–L53.


■ NCM-S • Round Shank • Metric

order number	catalog number	CSWS system size	D1		D		L		L2		CS
			mm	mm	in	mm	in	mm	in		
3483037	KM2520NCMS25	KM2520	25	25	.984	150	5.906	20	.787	1/4-18 NPT	
2541837	KM3225NCMS32	KM3225	32	32	1.260	220	8.661	25	.984	1/4-18 NPT	

■ Spare Parts


catalog number	spare parts package	wrench size actuation screw	Nm
KM2520NCMS25	KM2520NRPKG	5mm	19-22
KM3225NCMS32	KM3225NRPKG	6mm	34-40

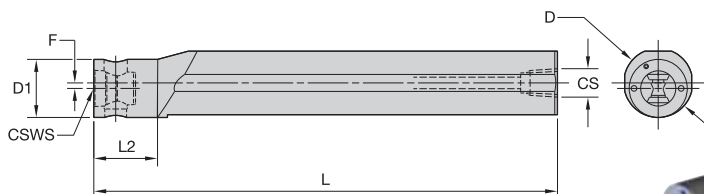
■ NCM-S • Round Shank • Inch

order number	catalog number	CSWS system size	D1		D		L		L2		CS
			mm	mm	in	mm	in	mm	in		
3483038	KM2520NCMS16	KM2520	25	25	1.000	153	6.016	20	.787	1/4-18 NPT	
2541835	KM3225NCMS20	KM3225	32	32	1.250	171	6.750	25	.984	1/4-18 NPT	

■ Spare Parts


catalog number	spare parts package	wrench size actuation screw	ft. lbs.
KM2520NCMS16	KM2520NRPKG	5mm	14-16
KM3225NCMS20	KM3225NRPKG	6mm	25-30

NOTE: For torque wrench, see page L52–L53.



■ ECM-S • Round Shank, Offset • Metric

order number	catalog number	CSWS system size	D1 mm	D mm	D in	L mm	L in	L2 mm	L2 in	F mm	F in	CS
2541836	KM3225ECMS40	KM3225	32	40	1.575	270	10.630	35	1.378	4	.157	1/4-18 NPT

■ Spare Parts



catalog number	spare parts package	wrench size actuation screw	Nm
KM3225ECMS40	KM3225NRPKG	6mm	34-40

■ ECM-S • Round Shank, Offset • Inch

order number	catalog number	CSWS system size	D1 mm	D mm	D in	L mm	L in	L2 mm	L2 in	F mm	F in	CS
2541730	KM3225ECMS24	KM3225	32	38	1.500	254	10.000	35	1.378	3	.120	1/4-18 NPT

■ Spare Parts

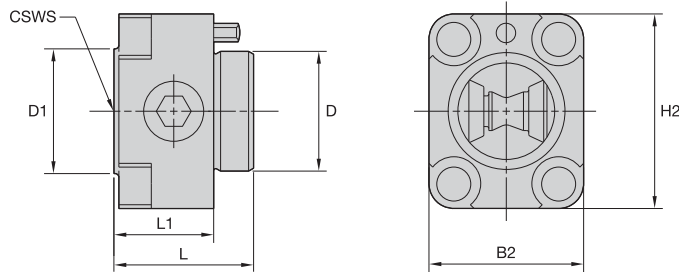


catalog number	spare parts package	wrench size actuation screw	ft. lbs.
KM3225ECMS24	KM3225NRPKG	6mm	25-30

NOTE: For torque wrench, see page L52–L53.



KM Mini Clamping Units



■ **NCM-SF • Flange Mount**

order number	catalog number	CSWS system size	D1		D		L		L1		B2		H2	
			mm	in	mm	in	mm	in	mm	in	mm	in	mm	in
3482941	KM20NCMSF2434	KM20	20	.787	18	.709	24	.945	18	.709	24	.945	33	1.299
2386035	KM25NCMSF3140	KM25	25	.984	24	.945	28	1.102	20	.787	31	1.221	39	1.535

■ **Spare Parts**



catalog number	spare parts package	wrench size actuation screw	Nm	ft. lbs.
KM20NCMSF2434	KM2520NRPKG	5mm	19-22	14-16
KM25NCMSF3140	KM25NRPKG	6mm	34-40	25-30

NOTE: For torque wrench, see page L52–L53.
For mounting controls, see page M70.

How Do Catalog Numbers Work?

Each character in our catalog number signifies a specific trait of that product. Use the following key columns and corresponding images to easily identify which attributes apply.



KM20SCLCR0925



KM

Kennametal
Modular

KM™ Mini Quick Change
tooling system

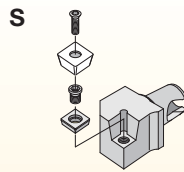
20

System
Size

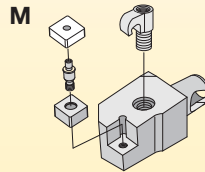
20 = Ø 20 x 20mm
25 = Ø 25 x 25mm

S

Clamping
System



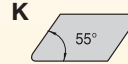
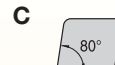
S-Clamping
Clamped from above with
a screw for indexable
inserts with hole



M-Clamping
Clamped from above and
through hole using
a pin for indexable
inserts with hole

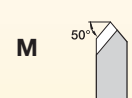
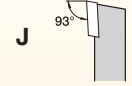
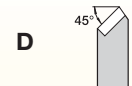
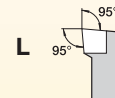
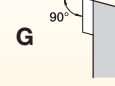
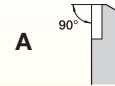
C

Insert
Shape

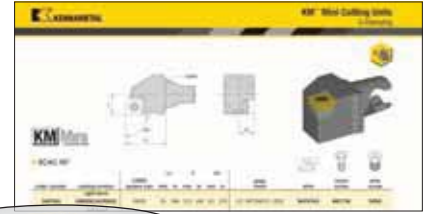


L

Cutting Unit
Shape



By referencing this easy-to-use guide, you can identify the correct product to meet your needs.



KM20SCLCR0925

<p>C</p>	<p>R</p>	<p>09</p>	<p>25</p>
<p>Clearance Angle</p>	<p>Direction</p>	<p>Insert Size</p>	<p>Gage Length</p>
<p>B 5°</p> <p>C 7°</p> <p>N 0°</p> <p>P 11°</p>	<p>L = Left-hand cutting unit</p> <p>R = Right-hand cutting unit</p> <p>N = Neutral cutting unit</p>	<p>C</p> <p>D</p> <p>V</p> <p>K</p> <p>S</p> <p>T</p> <p>W</p>	<p>L1 = Gage length</p>

How Do Catalog Numbers Work?

Each character in our catalog number signifies a specific trait of that product. Use the following key columns and corresponding images to easily identify which attributes apply.



KM20A3SR31635



KM

Kennametal
Modular

KM™ Mini Quick Change
tooling system

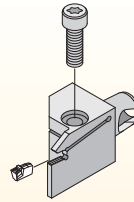
20

System
Size

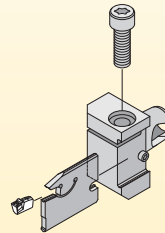
12 = Ø 12 x 12mm
16 = Ø 16 x 16mm

A3

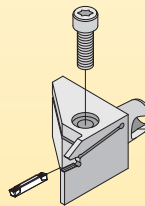
Clamping
Systems



A3 = Deep grooving



A2 = Cut-off



A4 = Grooving

S

Holder
Version

S = Side mount
E = End mount

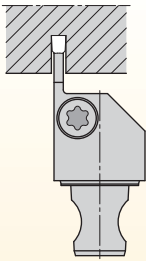
By referencing this easy-to-use guide, you can identify the correct product to meet your needs.



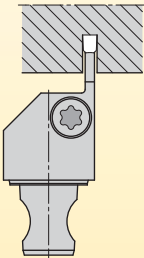
KM20A3SR31635

R

Direction



R = Right hand



L = Left hand

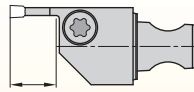
3

Insert
Seat Size

insert seat size
1
1B
2
2B
3
4
5

16

Cutting
Depth



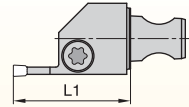
07 = 7mm

11 = 11mm

16 = 16mm

35

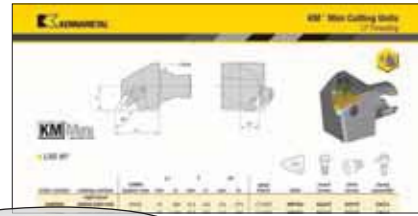
Gage
Length



L1 = Gage length

How Do Catalog Numbers Work?

Each character in our catalog number signifies a specific trait of that product. Use the following key columns and corresponding images to easily identify which attributes apply.



KM20LSSR1625



KM

Kennametal
Modular

KM™ Mini Quick Change
tooling system

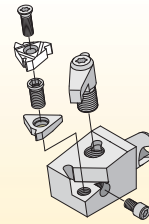
20

System
Size

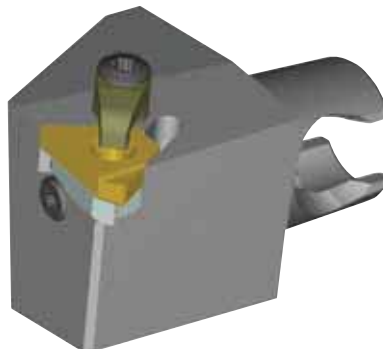
20 = \varnothing 20 x 20mm
25 = \varnothing 25 x 25mm

LS

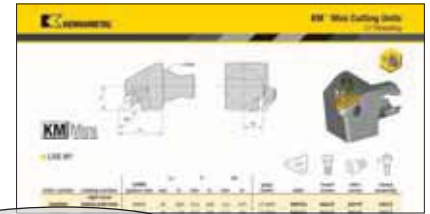
Clamping
Systems



LT Threading = Clamped from above with a screw



By referencing this easy-to-use guide, you can identify the correct product to meet your needs.



KM20LSSR1625

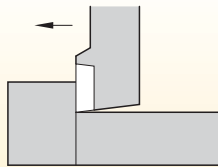
S

Location

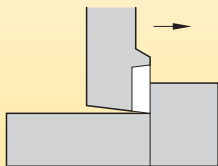
E = End mount
 S = Side mount

R

Direction



L = Left-hand cutting unit

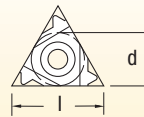


R = Right-hand cutting unit

16

Insert Size

I = Cutting edge length

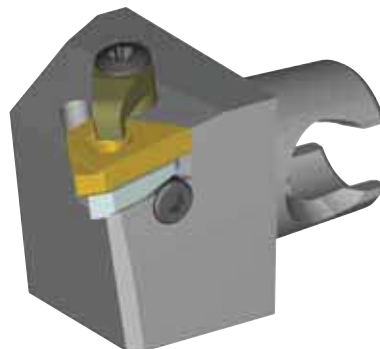


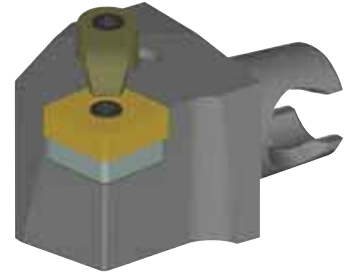
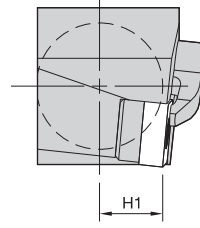
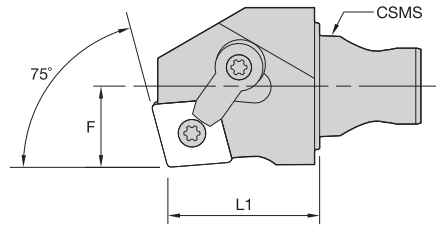
I	d (IC)
11	6,35
16	9,52
22	12,70
27	15,88

25

Gage Length

L₁ = Gage length

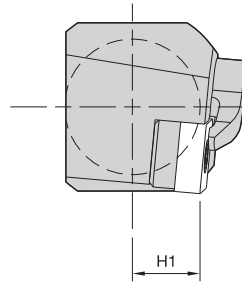
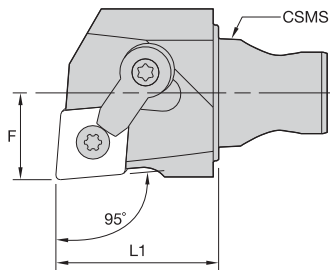




■ MCKN 75°



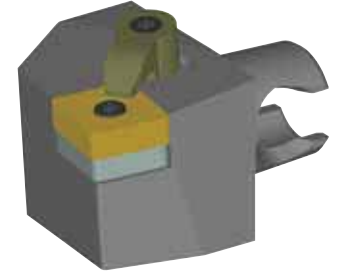
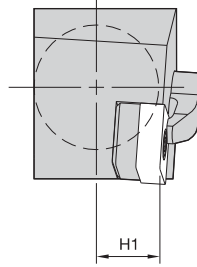
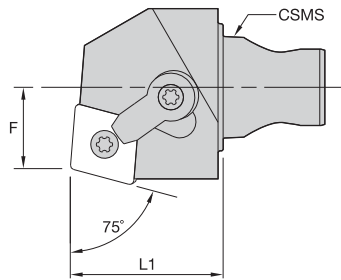
order number	catalog number	CSMS system size	L1		F		H1		gage insert	shim	lock pin	clamp	clamp screw
			mm	in	mm	in	mm	in					
right hand													
3487534	KM20MCKNR1225	KM20	25	.984	12,5	.492	9,5	.375	CN..120408/CN..432	ICSN432	KLM46	CKM20LP	STCM11
2398793	KM25MCKNR1230	KM25	30	1.181	16,0	.630	12,5	.492	CN..120408/CN..432	ICSN433	KLM4615IP	CKM20LP	STCM1115IP
left hand													
3487533	KM20MCKNL1225	KM20	25	.984	12,5	.492	9,5	.375	CN..120408/CN..432	ICSN432	KLM46	CKM20LP	STCM11
2398794	KM25MCKNL1230	KM25	30	1.181	16,0	.630	12,5	.492	CN..120408/CN..432	ICSN433	KLM4615IP	CKM20LP	STCM1115IP



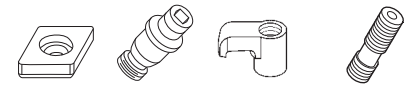
■ MCLN 95°



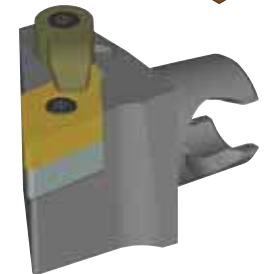
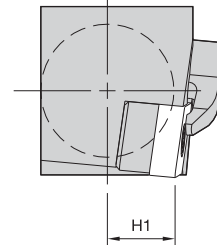
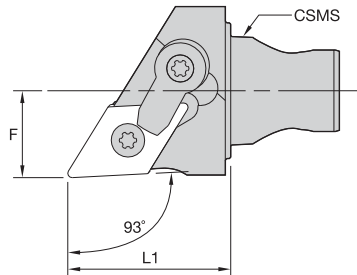
order number	catalog number	CSMS system size	L1		F		H1		gage insert	shim	lock pin	clamp	clamp screw
			mm	in	mm	in	mm	in					
right hand													
3487520	KM20MCLNR0925	KM20	25	.984	12,5	.492	9,5	.375	CN..090308/CN..322	ICSN332	KLM34L	CKM7LP	STCM9
3487522	KM20MCLNR1225	KM20	25	.984	12,5	.492	9,5	.375	CN..120408/CN..432	ICSN432	KLM46	CKM20LP	STCM11
2265207	KM25MCLNR1230	KM25	30	1.181	16,0	.630	12,5	.492	CN..120408/CN..432	ICSN433	KLM4615IP	CKM20LP	STCM1115IP
left hand													
3487519	KM20MCLNL0925	KM20	25	.984	12,5	.492	9,5	.375	CN..090308/CN..322	ICSN332	KLM34L	CKM7LP	STCM9
3487521	KM20MCLNL1225	KM20	25	.984	12,5	.492	9,5	.375	CN..120408/CN..432	ICSN432	KLM46	CKM20LP	STCM11
2398795	KM25MCLNL1230	KM25	30	1.181	16,0	.630	12,5	.492	CN..120408/CN..432	ICSN433	KLM4615IP	CKM20LP	STCM1115IP



■ MCRN 75°



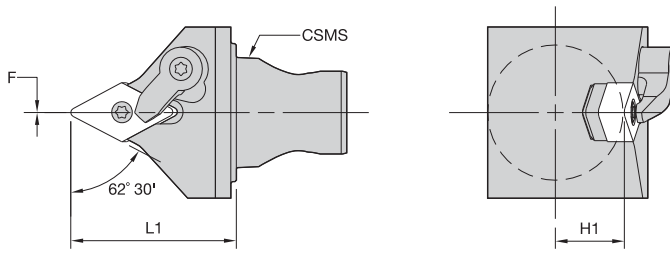
order number	catalog number	CSMS system size	L1		F		H1		gage insert	shim	lock pin	clamp	clamp screw
			mm	in	mm	in	mm	in					
right hand													
2398796	KM25MCRNR1230	KM25	30	1.181	16	.630	12,5	.492	CN..120408/CN..432	ICSN433	KLM4615IP	CKM20LP	STCM1115IP
left hand													
2398797	KM25MCRNL1230	KM25	30	1.181	16	.630	12,5	.492	CN..120408/CN..432	ICSN433	KLM4615IP	CKM20LP	STCM1115IP



■ MDJN 93°



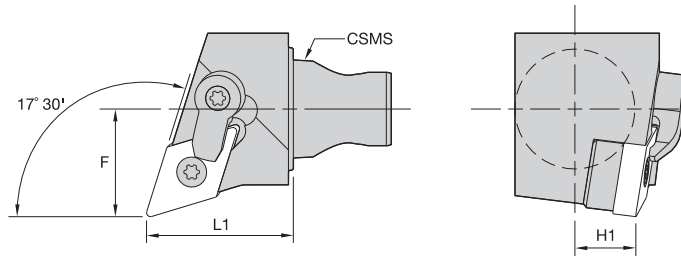
order number	catalog number	CSMS system size	L1		F		H1		gage insert	shim	lock pin	clamp	clamp screw
			mm	in	mm	in	mm	in					
right hand													
3487536	KM20MDJNR1125	KM20	25	.984	12,5	.492	9,5	.375	DN..110408/DN..332	IDSN322	KLM34L	CKM7LP	STCM9
3487538	KM20MDJNR150425	KM20	25	.984	12,5	.492	9,5	.375	DN..150408/DN..432	IDSN442	KLM46L	CKM7LP	STCM9
3487540	KM20MDJNR150625	KM20	25	.984	12,5	.492	9,5	.375	DN..150608/DN..442	IDSN432	KLM46L	CKM7LP	STCM9
3176217	KM25MDJNR1130	KM25	30	1.181	16,0	.630	12,5	.492	DN..110408/DN..332	IDSN322	KLM34LT9PKG	CKM7LP	STCM9T9
2398798	KM25MDJNR150430	KM25	30	1.181	16,0	.630	12,5	.492	DN..150408/DN..432	IDSN442	KLM46L15IP	CKM20LP	STCM1115IP
3397312	KM25MDJNR150630	KM25	30	1.181	16,0	.630	12,5	.492	DN..150608/DN..442	IDSN432	KLM46L	CKM23LP	STCM11
left hand													
3487535	KM20MDJNL1125	KM20	25	.984	12,5	.492	9,5	.375	DN..110408/DN..332	IDSN322	KLM34L	CKM7LP	STCM9
3487537	KM20MDJNL150425	KM20	25	.984	12,5	.492	9,5	.375	DN..150408/DN..432	IDSN442	KLM46L	CKM7LP	STCM9
3487539	KM20MDJNL150625	KM20	25	.984	12,5	.492	9,5	.375	DN..150608/DN..442	IDSN432	KLM46L	CKM7LP	STCM9
3176218	KM25MDJNL1130	KM25	30	1.181	16,0	.630	12,5	.492	DN..110408/DN..332	IDSN322	KLM34LT9PKG	CKM7LP	STCM9T9
2398799	KM25MDJNL150430	KM25	30	1.181	16,0	.630	12,5	.492	DN..150408/DN..432	IDSN442	KLM46L15IP	CKM20LP	STCM1115IP
3397311	KM25MDJNL150630	KM25	30	1.181	16,0	.630	12,5	.492	DN..150608/DN..442	IDSN432	KLM46L	CKM23LP	STCM11



■ MDPN 62° 30'



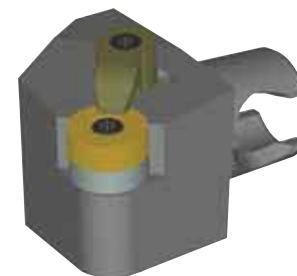
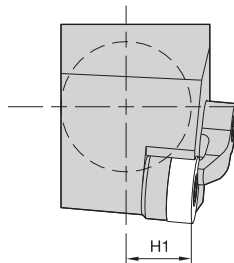
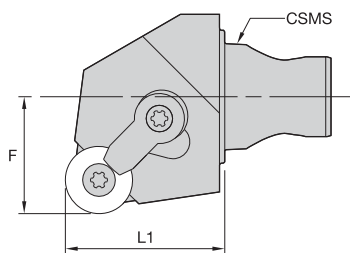
order number	catalog number	CSMS system size	L1		F		H1		gage insert	shim	lock pin	clamp	clamp screw
			mm	in	mm	in	mm	in					
2398800	KM25MDPNN1130	KM25	30	1.181	0,0	.000	12,5	.492	DN..110408/DN..332	IDSN322	KLM34LT9PKG	CKM7LP	STCM9T9



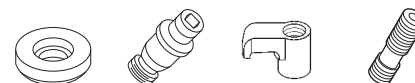
■ MDQN 107° 30'



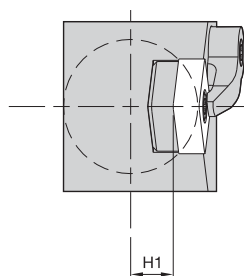
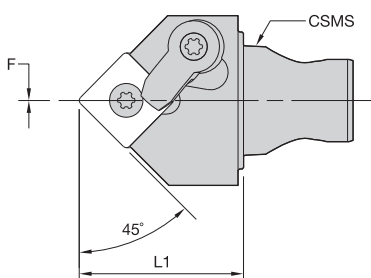
order number	catalog number	CSMS system size	L1		F		H1		gage insert	shim	lock pin	clamp	clamp screw
			mm	in	mm	in	mm	in					
2398801	right hand	KM25	30	1.181	22	.866	12,5	.492	DN..150408/DN..432	IDSN442	KLM46L15IP	CKM20LP	STCM1115IP
	left hand												
2398802	KM25MDQNL150430	KM25	30	1.181	22	.866	12,5	.492	DN..150408/DN..432	IDSN442	KLM46L15IP	CKM20LP	STCM1115IP



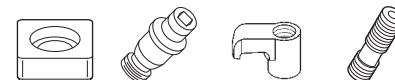
■ MRGN 0°



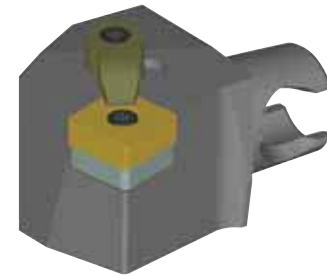
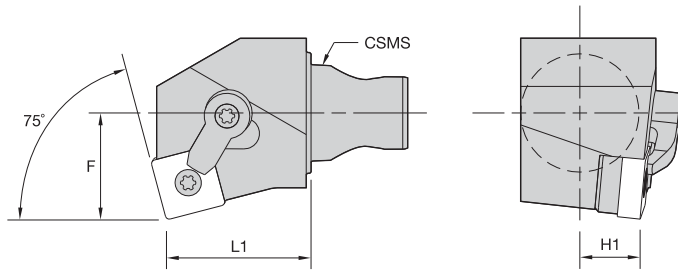
order number	catalog number	CSMS system size	L1		F		H1		gage insert	shim	lock pin	clamp	clamp screw
			mm	in	mm	in	mm	in					
right hand													
2629139	KM25MRGNR0930	KM25	30	1.181	16	.630	12,5	.492	RN..090300/RN..32	IRSN33	KLM34LT9PKG	CKM7LP	STCM9T9
2398803	KM25MRGNR1230	KM25	30	1.181	22	.866	12,5	.492	RN..120400/RN..43	IRSN43	KLM4615IP	CKM20LP	STCM1115IP
left hand													
2629140	KM25MRGNL0930	KM25	30	1.181	16	.630	12,5	.492	RN..090300/RN..32	IRSN33	KLM34LT9PKG	CKM7LP	STCM9T9
2398804	KM25MRGNL1230	KM25	30	1.181	22	.866	12,5	.492	RN..120400/RN..43	IRSN43	KLM4615IP	CKM20LP	STCM1115IP



■ MSDN 45°



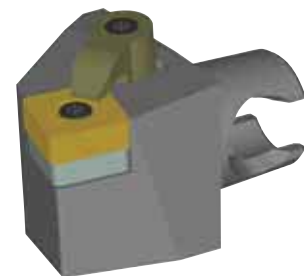
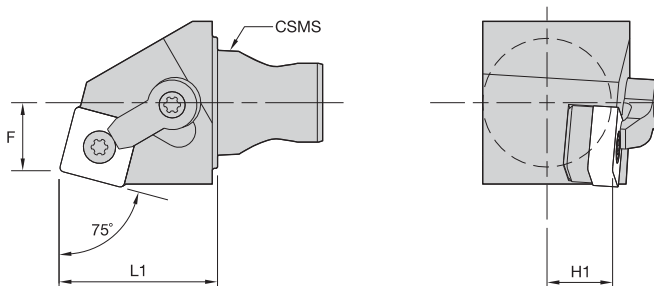
order number	catalog number	CSMS system size	L1		F		H1		gage insert	shim	lock pin	clamp	clamp screw
			mm	in	mm	in	mm	in					
2398805	KM25MSDNN1230	KM25	30	1.181	0	.000	12,5	.492	SN..120408/SN..432	ISSN433	KLM4615IP	CKM20LP	STCM1115IP



■ MSKN 75°



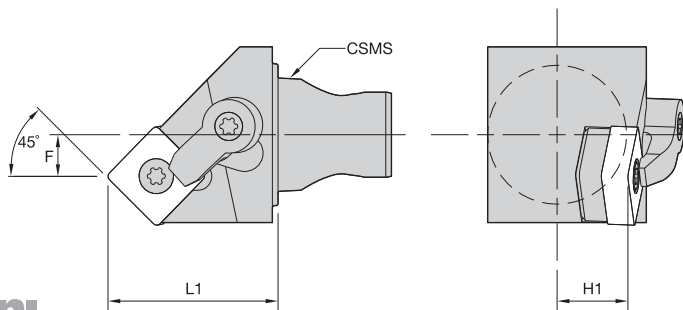
order number	catalog number	CSMS system size	L1		F		H1		gage insert	shim	lock pin	clamp	clamp screw
			mm	in	mm	in	mm	in					
	right hand												
2398806	KM25MSKNR1230	KM25	30	1.181	22	.866	12,5	.492	SN..120408/SN..432	ISSN433	KLM4615IP	CKM20LP	STCM1115IP
	left hand												
2398807	KM25MSKNL1230	KM25	30	1.181	22	.866	12,5	.492	SN..120408/SN..432	ISSN433	KLM4615IP	CKM20LP	STCM1115IP



■ MSRN 75°



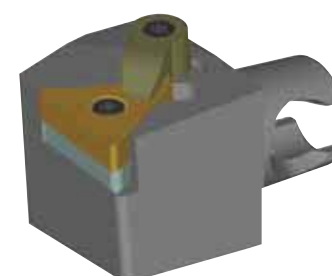
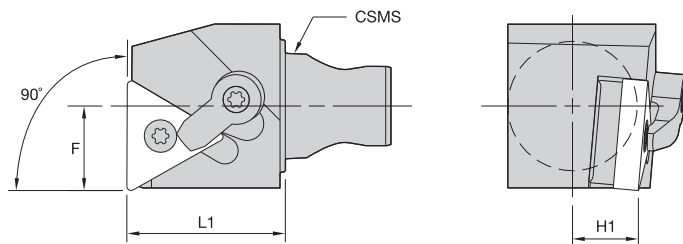
order number	catalog number	CSMS system size	L1		F		H1		gage insert	shim	lock pin	clamp	clamp screw
			mm	in	mm	in	mm	in					
	right hand												
2398808	KM25MSRNR1230	KM25	30	1.181	13	.512	12,5	.492	SN..120408/SN..432	ISSN433	KLM4615IP	CKM20LP	STCM1115IP
	left hand												
2398809	KM25MSRNL1230	KM25	30	1.181	13	.512	12,5	.492	SN..120408/SN..432	ISSN433	KLM4615IP	CKM20LP	STCM1115IP



■ MSSN 45°



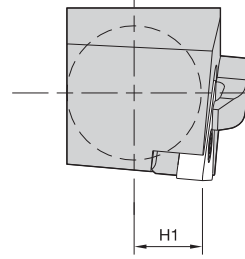
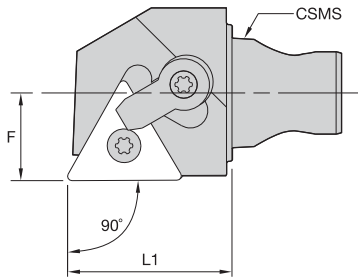
order number	catalog number	CSMS system size	L1		F		H1		gage insert	shim	lock pin	clamp	clamp screw
			mm	in	mm	in	mm	in					
	right hand												
2398810	KM25MSSNR1230	KM25	30,0	1.181	7,35	.289	12,5	.492	SN..120408/SN..432	ISSN433	KLM4615IP	CKM20LP	STCM1115IP
	left hand												
2398811	KM25MSSNL1230	KM25	30,0	1.181	7,35	.289	12,5	.492	SN..120408/SN..432	ISSN433	KLM4615IP	CKM20LP	STCM1115IP



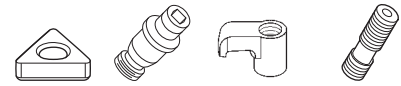
■ MTFN 90°



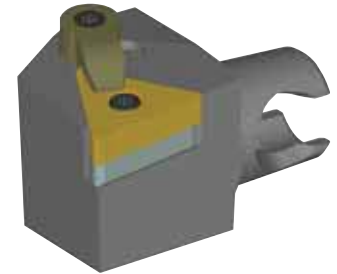
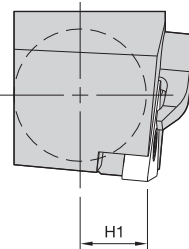
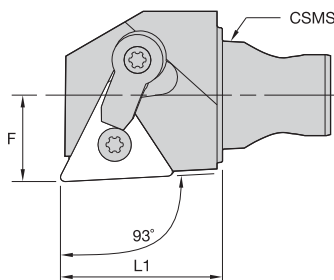
order number	catalog number	CSMS system size	L1		F		H1		gage insert	shim	lock pin	clamp	clamp screw
			mm	in	mm	in	mm	in					
	right hand												
2655560	KM25MTFNR1630	KM25	30	1.181	16	.630	12,5	.492	TN..160408/TN..332	ITSN323	KLM34L9IP	CKM20LP	STCM119IP
2398812	KM25MTFNR2230	KM25	30	1.181	16	.630	12,5	.492	TN..220408/TN..432	ITSN433	KLM4615IP	CKM20LP	STCM1115IP
	left hand												
2655561	KM25MTFNL1630	KM25	30	1.181	16	.630	12,5	.492	TN..160408/TN..332	ITSN323	KLM34L9IP	CKM20LP	STCM119IP
2398813	KM25MTFNL2230	KM25	30	1.181	16	.630	12,5	.492	TN..220408/TN..432	ITSN433	KLM4615IP	CKM20LP	STCM1115IP



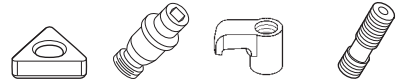
■ **MTGN 90°**



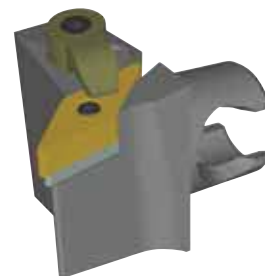
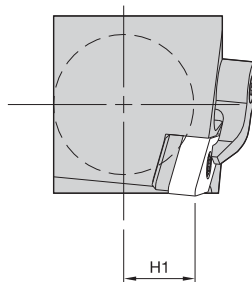
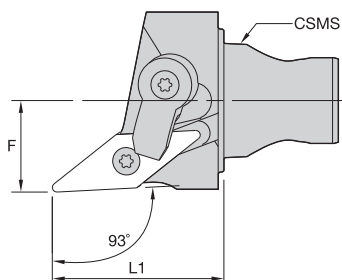
order number	catalog number	CSMS system size	L1		F		H1		gage insert	shim	lock pin	clamp	clamp screw
			mm	in	mm	in	mm	in					
right hand													
3487542	KM20MTGNR1625	KM20	25	.984	12,5	.492	9,5	.375	TN..160408/TN..332	ITSN322	KLM34L	CKM7LP	STCM9
2655562	KM25MTGNR1630	KM25	30	1.181	16,0	.630	12,5	.492	TN..160408/TN..332	ITSN323	KLM34L9IP	CKM20LP	STCM119IP
2398814	KM25MTGNR2230	KM25	30	1.181	16,0	.630	12,5	.492	TN..220408/TN..432	ITSN433	KLM4615IP	CKM20LP	STCM1115IP
left hand													
3487541	KM20MTGNL1625	KM20	25	.984	12,5	.492	9,5	.375	TN..160408/TN..332	ITSN322	KLM34L	CKM7LP	STCM9
2655593	KM25MTGNL1630	KM25	30	1.181	16,0	.630	12,5	.492	TN..160408/TN..332	ITSN323	KLM34L9IP	CKM20LP	STCM119IP
2398815	KM25MTGNL2230	KM25	30	1.181	16,0	.630	12,5	.492	TN..220408/TN..432	ITSN433	KLM4615IP	CKM20LP	STCM1115IP



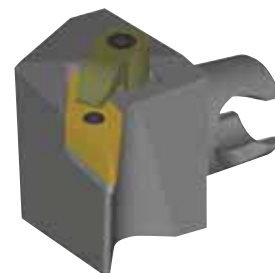
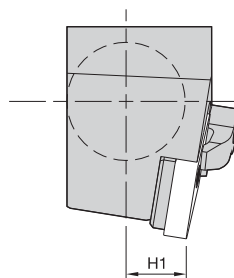
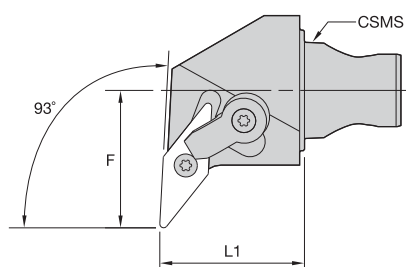
■ **MTJN 93°**



order number	catalog number	CSMS system size	L1		F		H1		gage insert	shim	lock pin	clamp	clamp screw
			mm	in	mm	in	mm	in					
right hand													
2655594	KM25MTJNR1630	KM25	30	1.181	16	.630	12,5	.492	TN..160408/TN..332	ITSN323	KLM34L9IP	CKM20LP	STCM119IP
2398816	KM25MTJNR2230	KM25	30	1.181	16	.630	12,5	.492	TN..220408/TN..432	ITSN433	KLM4615IP	CKM20LP	STCM1115IP
left hand													
2655595	KM25MTJNL1630	KM25	30	1.181	16	.630	12,5	.492	TN..160408/TN..332	ITSN323	KLM34L9IP	CKM20LP	STCM119IP
2398817	KM25MTJNL2230	KM25	30	1.181	16	.630	12,5	.492	TN..220408/TN..432	ITSN433	KLM4615IP	CKM20LP	STCM1115IP

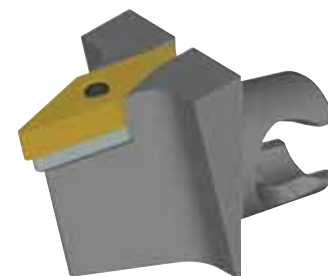
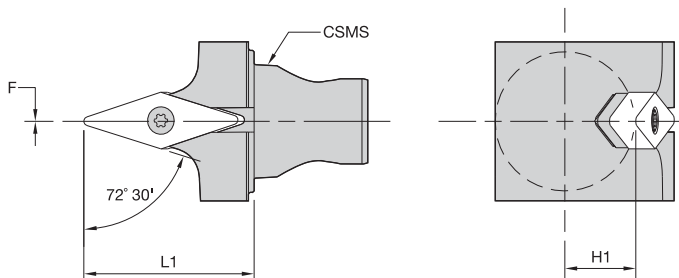

MVJN 93°

order number	catalog number	CSMS system size	L1		F		H1		gage insert	shim	lock pin	clamp	clamp screw
			mm	in	mm	in	mm	in					
right hand													
3487548	KM20MVJNR1630	KM20	30	1.181	12,50	.492	9,5	.375	VN..160408/VN..332	IVSN322	KLM34L	CKM7LP	STCM9
2398818	KM25MVJNR1630	KM25	30	1.181	16,00	.630	12,5	.492	VN..160408/VN..332	IVSN322	KLM34L9IP	CKM20LP	STCM119IP
left hand													
3487547	KM20MVJNL1630	KM20	30	1.181	12,50	.492	9,5	.375	VN..160408/VN..332	IVSN322	KLM34L	CKM7LP	STCM9
2398819	KM25MVJNL1630	KM25	30	1.181	16,00	.630	12,5	.492	VN..160408/VN..332	IVSN322	KLM34L9IP	CKM20LP	STCM119IP


MVUN 93°

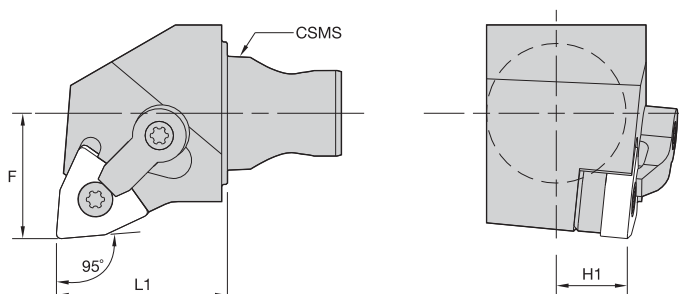
order number	catalog number	CSMS system size	L1		F		H1		gage insert	shim	lock pin	clamp	clamp screw
			mm	in	mm	in	mm	in					
right hand													
2398820	KM25MVUNR1630	KM25	30	1.181	28,5	1.122	12,5	.492	VN..160408/VN..332	IVSN322	KLM34L9IP	CKM20LP	STCM119IP
left hand													
2398821	KM25MVUNL1630	KM25	30	1.181	28,5	1.122	12,5	.492	VN..160408/VN..332	IVSN322	KLM34L9IP	CKM20LP	STCM119IP





■ MVVN 72° 30'

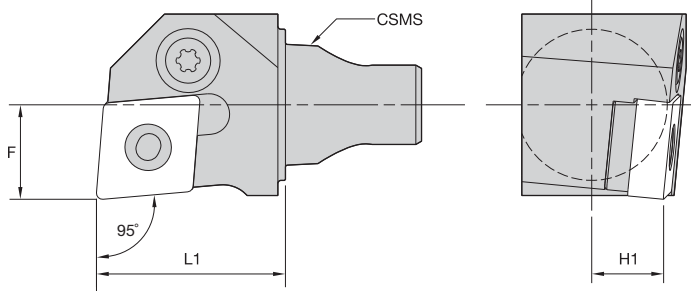
order number	catalog number	CSMS system size	L1		F		H1		gage insert	shim	lock pin
			mm	in	mm	in	mm	in			
2398822	KM25MVVN1630	KM25	30	1.181	0	.000	12,5	.492	VN..160408/VN..332	IWSN322	KLM34L9IP



■ MWLN 95°

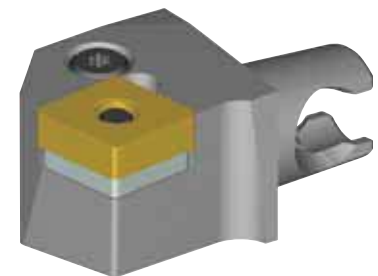
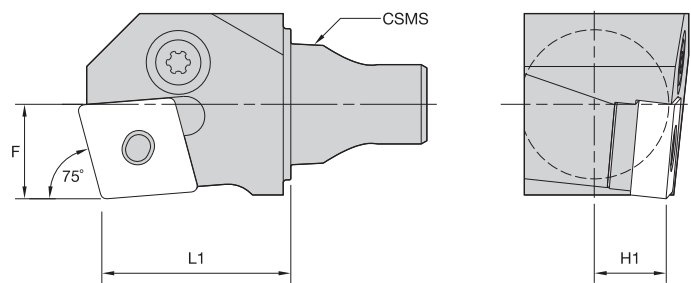
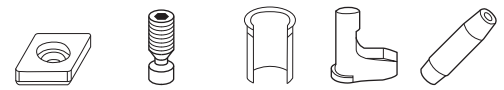
order number	catalog number	CSMS system size	L1		F		H1		gage insert	shim	lock pin	clamp	clamp screw
			mm	in	mm	in	mm	in					
right hand													
3487544	KM20MWLNRO625	KM20	25	.984	12,5	.492	9,5	.375	WN..060408/WN..332	IWSN322	KLM34L	CKM7LP	STCM9
3487550	KM20MWLNRO825	KM20	25	.984	12,5	.492	9,5	.375	WN..080408/WN..432	IWSN433	KLM46	CKM7LP	STCM9
2398823	KM25MWLNRO830	KM25	30	1.181	22,0	.866	12,5	.492	WN..080408/WN..432	IWSN433	KLM4615IP	CKM20LP	STCM1115IP
left hand													
3487543	KM20MWLNLO625	KM20	25	.984	12,5	.492	9,5	.375	WN..060408/WN..332	IWSN322	KLM34L	CKM7LP	STCM9
3487549	KM20MWLNLO825	KM20	25	.984	12,5	.492	9,5	.375	WN..080408/WN..432	IWSN433	KLM46	CKM7LP	STCM9
2398824	KM25MWLNLO830	KM25	30	1.181	22,0	.866	12,5	.492	WN..080408/WN..432	IWSN433	KLM4615IP	CKM20LP	STCM1115IP





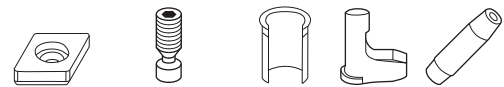
■ PCLN 95°

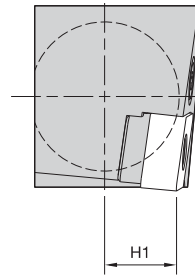
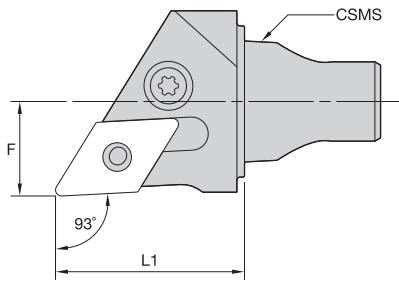
order number	catalog number	L1		F		H1		gage insert	shim	lever screw	shim pin	toggle lever	punch
		mm	in	mm	in	mm	in						
	right hand												
3397169	KM20PCLNR1225	25,00	.984	12,5	.492	9,5	.375	CN..120408/CN..432	512.112	514.123	513.023	511.023	515.018
	left hand												
3397168	KM20PCLNL1225	25,00	.984	12,5	.492	9,5	.375	CN..120408/CN..432	512.112	514.123	513.023	511.023	515.018



■ PCKN 75°

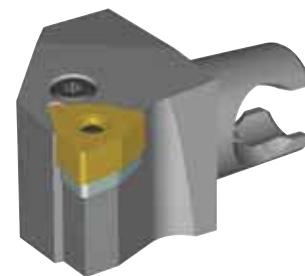
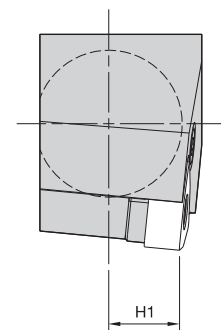
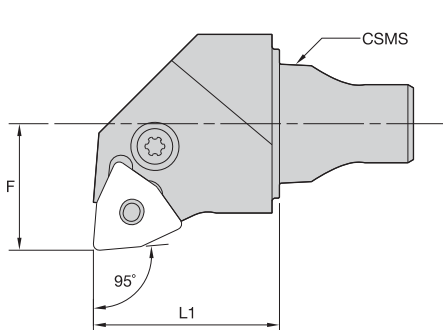
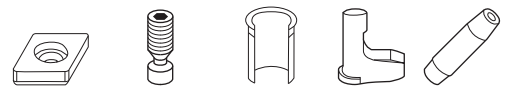
order number	catalog number	L1		F		H1		gage insert	shim	lever screw	shim pin	toggle lever	punch
		mm	in	mm	in	mm	in						
	right hand												
3397171	KM20PCKNR1225	25	.984	12,5	.492	9,5	.375	CN..120408/CN..432	512.112	514.123	513.023	511.023	515.018
	left hand												
3397170	KM20PCKNL1225	25	.984	12,5	.492	9,5	.375	CN..120408/CN..432	512.112	514.123	513.023	511.023	515.018





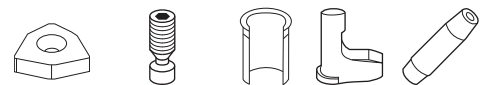
■ PDJN 93°

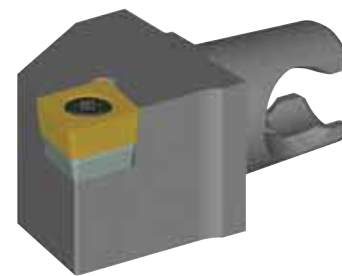
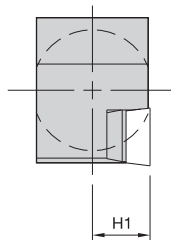
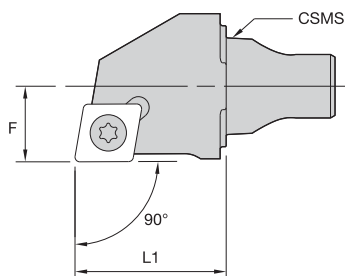
order number	catalog number	L1		F		H1		gage insert	shim	lever screw	shim pin	toggle lever	punch
		mm	in	mm	in	mm	in						
3397213	KM20PDJNR1125	25	.984	12,5	.492	9,5	.375	DN..110408/DN..332	512.060	514.118	513.060	511.060	515.018
3397172	KM20PDJNL1125	25	.984	12,5	.492	9,5	.375	DN..110408/DN..332	512.060	514.118	513.060	511.060	515.018



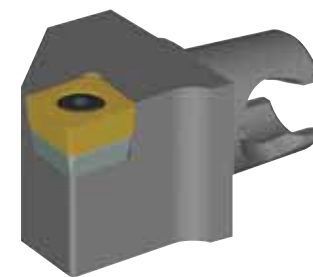
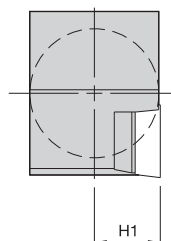
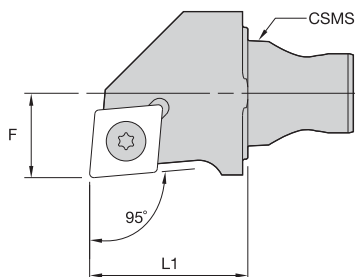
■ PWLN 95°

order number	catalog number	L1		F		H1		gage insert	shim	lever screw	shim pin	toggle lever	punch
		mm	in	mm	in	mm	in						
3397215	KM20PWLNR0625	25	.984	17,0	.669	9,5	.375	WN..060408/WN..332	512.134	514.118	513.018	511.018	515.018
3397214	KM20PWLNL0625	25	.984	17,0	.669	9,5	.375	WN..060408/WN..332	512.134	514.118	513.018	511.018	515.018



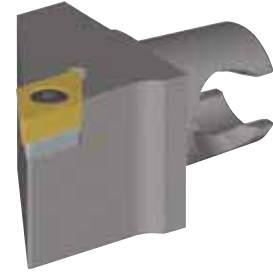
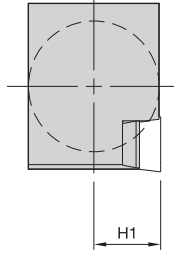
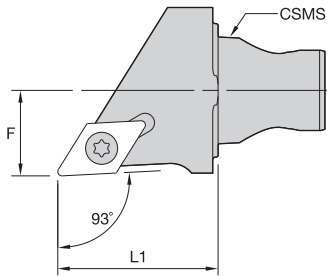

■ SCAC 90°

order number	catalog number	CSMS system size	L1		F		H1		gage insert	shim	insert screw	shim screw
			mm	in	mm	in	mm	in				
	right hand											
3487553	KM20SCACR0925	KM20	25	.984	12,5	.492	9,5	.375	CC..09T308/CC..3252	SKCP343	MS1156	SRS3
	left hand											
3487512	KM20SCACL0925	KM20	25	.984	12,5	.492	9,5	.375	CC..09T308/CC..3252	SKCP343	MS1156	SRS3


■ SCLC 95°

order number	catalog number	CSMS system size	L1		F		H1		gage insert	shim	insert screw	shim screw
			mm	in	mm	in	mm	in				
	right hand											
3487555	KM20SCLCR0925	KM20	25	.984	12,5	.492	9,5	.375	CC..09T308/CC..3252	SKCP343	MS1156	SRS3
3487557	KM20SCLCR1225	KM20	25	.984	12,5	.492	9,5	.375	CC..120408/CC..432	SKCP453	MS1158	SRS4
2399472	KM25SCLCR0930	KM25	30	1.181	16,0	.630	12,5	.492	CC..09T308/CC..3252	SKCP343	MS1156	SRS3
2399474	KM25SCLCR1230	KM25	30	1.181	16,0	.630	12,5	.492	CC..120408/CC..432	SKCP453	MS1158	SRS4
	left hand											
3487554	KM20SCLCL0925	KM20	25	.984	12,5	.492	9,5	.375	CC..09T308/CC..3252	SKCP343	MS1156	SRS3
3487556	KM20SCLCL1225	KM20	25	.984	12,5	.492	9,5	.375	CC..120408/CC..432	SKCP453	MS1158	SRS4
2399473	KM25SCLCL0930	KM25	30	1.181	16,0	.630	12,5	.492	CC..09T308/CC..3252	SKCP343	MS1156	SRS3
2399475	KM25SCLCL1230	KM25	30	1.181	16,0	.630	12,5	.492	CC..120408/CC..432	SKCP453	MS1158	SRS4

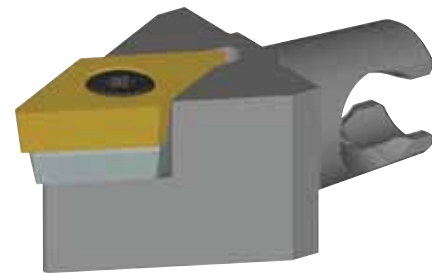
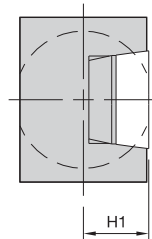
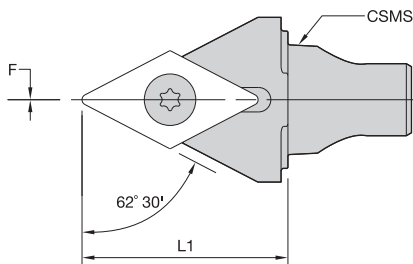




■ SDJC 93°



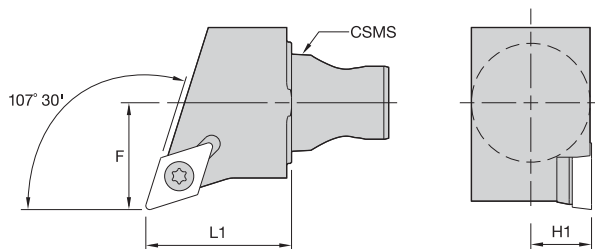
order number	catalog number	CSMS system size	L1		F		H1		gage insert	shim	insert screw	shim screw
			mm	in	mm	in	mm	in				
right hand												
3487495	KM20SDJCR1125	KM20	25	.984	12,5	.492	9,5	.375	DC..11T308/DC..3252	SKDP343	MS1156	SRS3
3487497	KM20SDJCR1525	KM20	25	.984	12,5	.492	9,5	.375	DC..150408/DC..432	.SKDP453	MS1158	SRS4
2399476	KM25SDJCR1130	KM25	30	1.181	16,0	.630	12,5	.492	DC..11T308/DC..3252	SKDP343	MS1156	SRS3
left hand												
3487494	KM20SDJCL1125	KM20	25	.984	12,5	.492	9,5	.375	DC..11T308/DC..3252	SKDP343	MS1156	SRS3
3487496	KM20SDJCL1525	KM20	25	.984	12,5	.492	9,5	.375	DC..150408/DC..432	SKDP453	MS1158	SRS4
2399477	KM25SDJCL1130	KM25	30	1.181	16,0	.630	12,5	.492	DC..11T308/DC..3252	SKDP343	MS1156	SRS3



■ SDPC 62° 30'



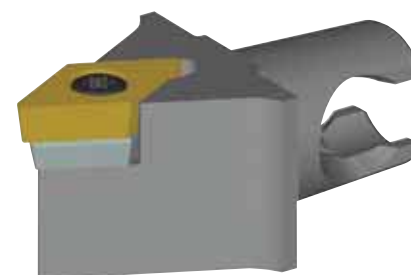
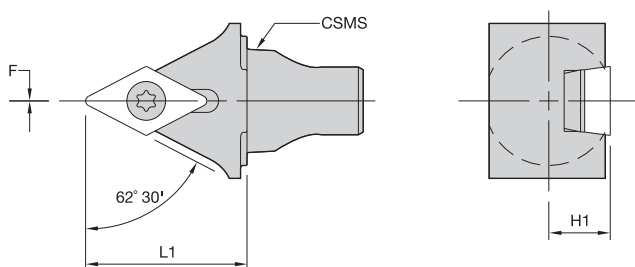
order number	catalog number	CSMS system size	L1		F		H1		gage insert	shim	insert screw	shim screw
			mm	in	mm	in	mm	in				
3487508	KM20SDPCN1530	KM20	30	1.181	0	.000	9,5	.375	DC..150408/DC..432	SKDP453	MS1158	SRS4
2399478	KM25SDPCN1130	KM25	30	1.181	0	.000	12,5	.492	DC..11T308/DC..3252	SKDP343	MS1156	SRS3



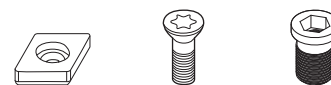
■ SDQC 107° 30'



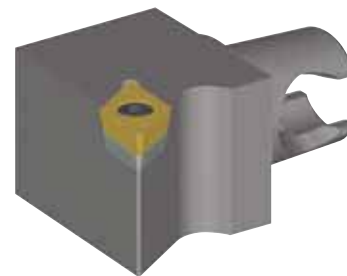
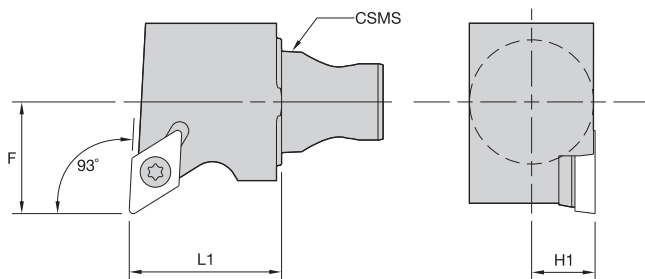
order number	catalog number	CSMS system size	L1		F		H1		gage insert	shim	insert screw	shim screw
			mm	in	mm	in	mm	in				
right hand												
3487499	KM20SDQCR1125	KM20	25	.984	17	.669	9,5	.375	DC..11T308/DC..3252	SKDP343	MS1156	SRS3
3487501	KM20SDQCR1525	KM20	25	.984	17	.669	9,5	.375	DC..150408/DC..432	SKDP453	MS1158	SRS4
2399479	KM25SDQCR1130	KM25	30	1.181	22	.866	12,5	.492	DC..11T308/DC..3252	SKDP343	MS1156	SRS3
left hand												
3487498	KM20SDQCL1125	KM20	25	.984	17	.669	9,5	.375	DC..11T308/DC..3252	SKDP343	MS1156	SRS3
3487500	KM20SDQCL1525	KM20	25	.984	17	.669	9,5	.375	DC..150408/DC..432	SKDP453	MS1158	SRS4
2399480	KM25SDQCL1130	KM25	30	1.181	22	.866	12,5	.492	DC..11T308/DC..3252	SKDP343	MS1156	SRS3



■ SDNC 62° 30'



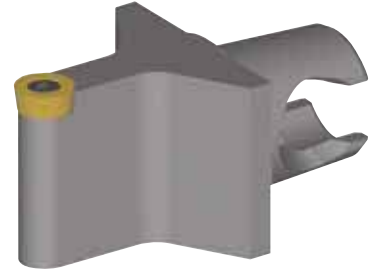
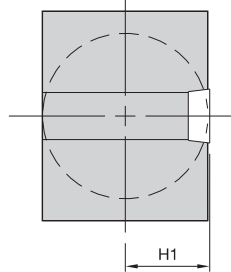
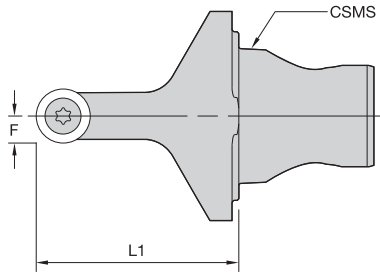
order number	catalog number	CSMS system size	L1		F		H1		gage insert	shim	insert screw	shim screw
			mm	in	mm	in	mm	in				
3487506	KM20SDNCN1125	KM20	25	.984	0	.000	9,5	.375	DC..11T308/DC..3252	SKDP343	MS1156	SRS3
3487507	KM20SDNCN1530	KM20	30	1.181	0	.000	9,5	.375	DC..150408/DC..432	SKDP453	MS1158	SRS4



■ SDUC 93°



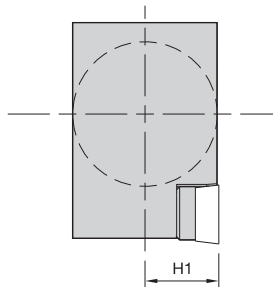
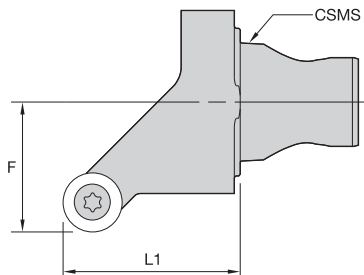
order number	catalog number	CSMS system size	L1		F		H1		gage insert	shim	insert screw	shim screw
			mm	in	mm	in	mm	in				
	right hand											
2399481	KM25SDUCR1130	KM25	30	1.181	22	.866	12,5	.492	DC..11T308/DC..3252	SKDP343	MS1156	SRS3
	left hand											
2399482	KM25SDUCL1130	KM25	30	1.181	22	.866	12,5	.492	DC..11T308/DC..3252	SKDP343	MS1156	SRS3



■ SRDC 0°



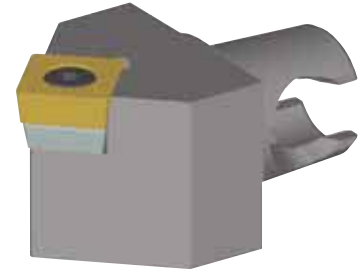
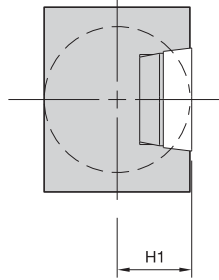
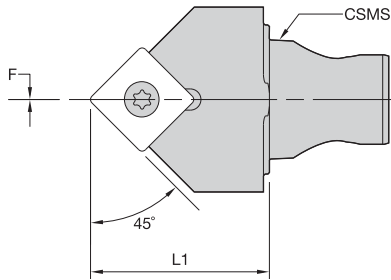
order number	catalog number	CSMS system size	L1		F		H1		gage insert	insert screw
			mm	in	mm	in	mm	in		
2399483	KM25SRDCN0830	KM25	30	1.181	4	.158	12,5	.492	RC..0803M0	MS1154



■ SRGC 90°



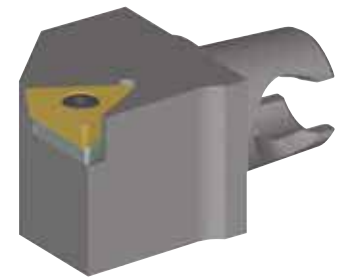
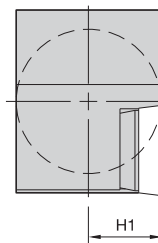
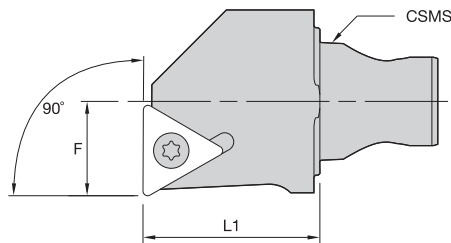
order number	catalog number	CSMS system size	L1		F		H1		gage insert	shim	insert screw	shim screw
			mm	in	mm	in	mm	in				
2399484	right hand	KM25	30	1.181	22	.866	12,5	.492	RC..10T3M0	SKRN100300	MS1156	SRS3
	left hand											
2399485	KM25SRGCL1030	KM25	30	1.181	22	.866	12,5	.492	RC..10T3M0	SKRN100300	MS1156	SRS3



■ **SSDC 45°**



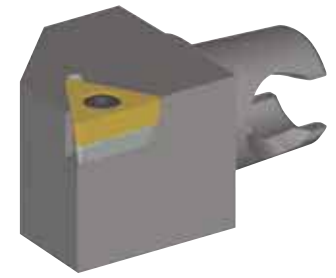
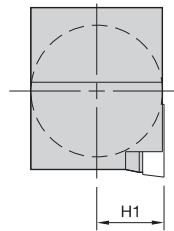
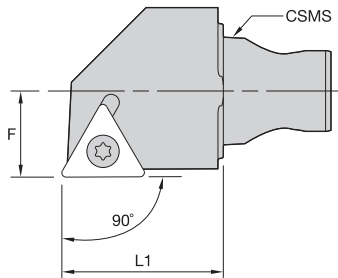
order number	catalog number	CSMS system size	L1		F		H1		gage insert	shim	insert screw	shim screw
			mm	in	mm	in	mm	in				
2399486	KM25SSDCN1230	KM25	30	1.181	0	.000	12,5	.492	SC..120408/SC..432	SKSP453	MS1158	SRS4



■ **STFC 90°**

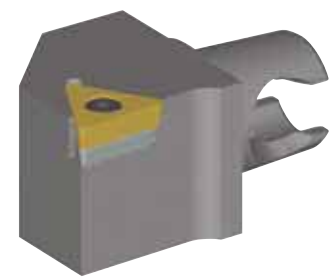
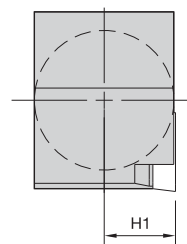
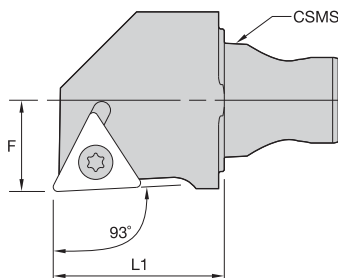


order number	catalog number	CSMS system size	L1		F		H1		gage insert	shim	insert screw	shim screw
			mm	in	mm	in	mm	in				
2399487	right hand	KM25	30	1.181	16	.630	12,5	.492	TC..16T308/TC..3252	SKTP343	MS1156	SRS3
	left hand											
2399488	KM25STFCL1630	KM25	30	1.181	16	.630	12,5	.492	TC..16T308/TC..3252	SKTP343	MS1156	SRS3



■ STGC 90°

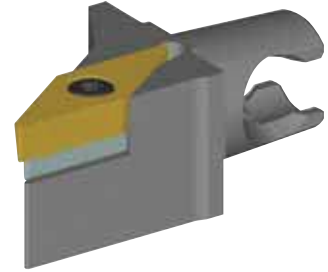
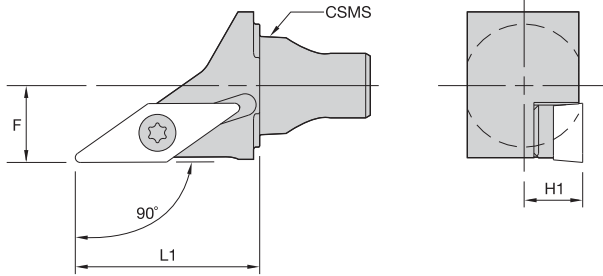
order number	catalog number	CSMS system size	L1		F		H1		gage insert	shim	insert screw	shim screw
			mm	in	mm	in	mm	in				
right hand												
3487559	KM20STGCR1625	KM20	25	.984	12,5	.492	9,5	.375	TC..16T308/TC..3252	SKTP343	MS1156	SRS3
2399489	KM25STGCR1630	KM25	30	1.181	16,0	.630	12,5	.492	TC..16T308/TC..3252	SKTP343	MS1156	SRS3
left hand												
3487558	KM20STGCL1625	KM20	25	.984	12,5	.492	9,5	.375	TC..16T308/TC..3252	SKTP343	MS1156	SRS3
2399490	KM25STGCL1630	KM25	30	1.181	16,0	.630	12,5	.492	TC..16T308/TC..3252	SKTP343	MS1156	SRS3



■ STJC 93°

order number	catalog number	CSMS system size	L1		F		H1		gage insert	shim	insert screw	shim screw
			mm	in	mm	in	mm	in				
right hand												
3487561	KM20STJCR1625	KM20	25	.984	12,5	.492	9,5	.375	TC..16T308/TC..3252	SKTP343	MS1156	SRS3
2399491	KM25STJCR1630	KM25	30	1.181	16,0	.630	12,5	.492	TC..16T308/TC..3252	SKTP343	MS1156	SRS3
left hand												
3487560	KM20STJCL1625	KM20	25	.984	12,5	.492	9,5	.375	TC..16T308/TC..3252	SKTP343	MS1156	SRS3
2399492	KM25STJCL1630	KM25	30	1.181	16,0	.630	12,5	.492	TC..16T308/TC..3252	SKTP343	MS1156	SRS3

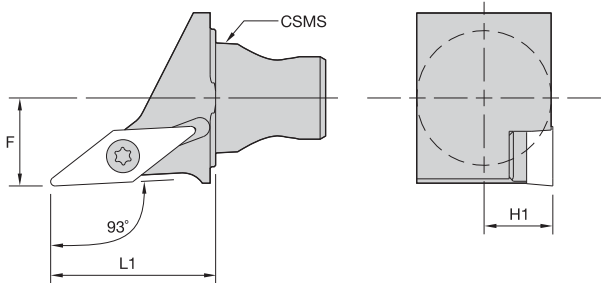




■ SVAB 90°



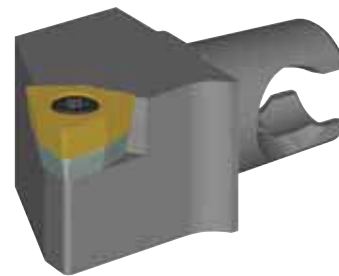
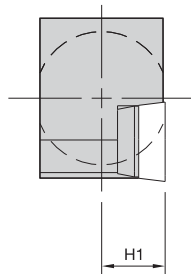
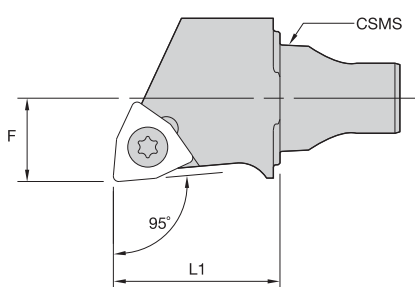
order number	catalog number	CSMS system size	L1		F		H1		gage insert	shim	insert screw	shim screw
			mm	in	mm	in	mm	in				
	right hand											
3487563	KM20SVABR1630	KM20	30	1.181	12,5	.492	9,5	.375	VB..160408/VB..332	SKVN343	MS1156	SRS3
	left hand											
3487562	KM20SVABL1630	KM20	30	1.181	12,5	.492	9,5	.375	VB..160408/VB..332	SKVN343	MS1156	SRS3



■ SVJB 93°



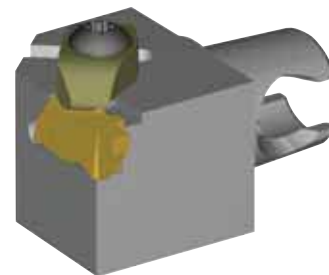
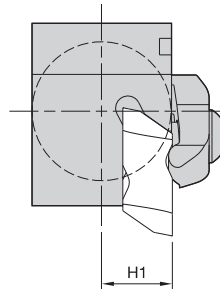
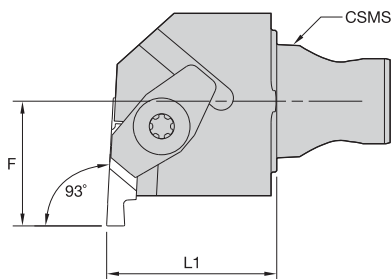
order number	catalog number	CSMS system size	L1		F		H1		gage insert	shim	insert screw	shim screw
			mm	in	mm	in	mm	in				
	right hand											
3487565	KM20SVJBR1125	KM20	25	.984	12,5	.492	9,5	.375	VB..110304/VB..221	—	MS1153	—
3487567	KM20SVJBR1630	KM20	30	1.181	12,5	.492	9,5	.375	VB..160408/VB..332	SKVN343	MS1156	SRS3
3397261	KM25SVJBL1130	KM25	30	1.181	16,0	.630	12,5	.492	VB..110304/VB..221	—	MS1153	—
3397262	KM25SVJBR1130	KM25	30	1.181	16,0	.630	12,5	.492	VB..110304/VB..221	—	MS1153	—
3365589	KM25SVJBR1630	KM25	30	1.181	16,0	.630	12,5	.492	VB..160408/VB..332	SKVN343	MS1156	SRS3
	left hand											
3487564	KM20SVJBL1125	KM20	25	.984	12,5	.492	9,5	.375	VB..110304/VB..221	—	MS1153	—
3487566	KM20SVJBL1630	KM20	30	1.181	12,5	.492	9,5	.375	VB..160408/VB..332	SKVN343	MS1156	SRS3
3365590	KM25SVJBL1630	KM25	30	1.181	16,0	.630	12,5	.492	VB..160408/VB..332	SKVN343	MS1156	SRS3



■ SWLC 95°



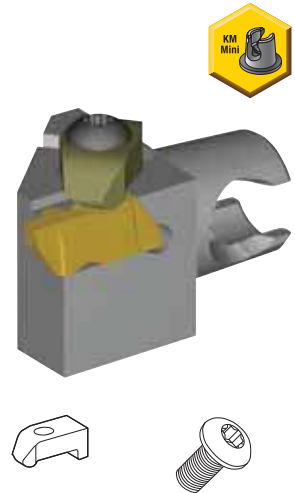
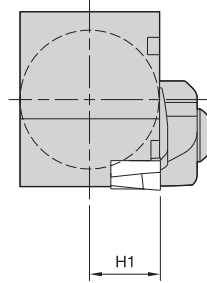
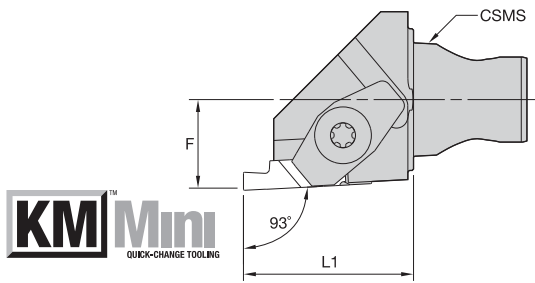
order number	catalog number	CSMS system size	L1		F		H1		gage insert	shim	insert screw	shim screw
			mm	in	mm	in	mm	in				
	right hand											
3487569	KM20SWLCR0625	KM20	25	.984	12,5	.492	9,5	.375	WC..06T308/WC..3252	SKWP343	MS1156	SRS3
	left hand											
3487568	KM20SWLCL0625	KM20	25	.984	12,5	.492	9,5	.375	WC..06T308/WC..3252	SKWP343	MS1156	SRS3



■ NE 93° • End Mount

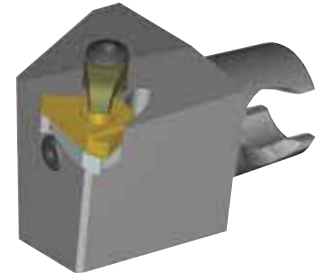
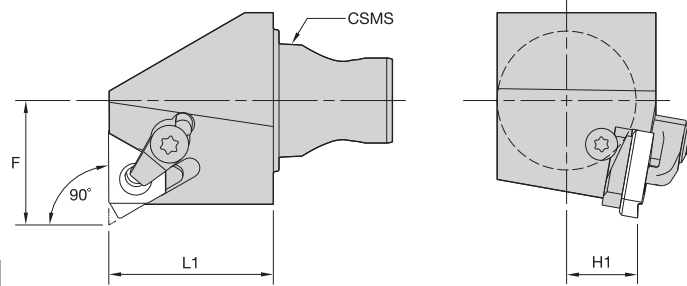


order number	catalog number	CSMS system size	L1		F		H1		gage insert	clamp	clamp screw
			mm	in	mm	in	mm	in			
	right hand										
3483036	KM20NER225	KM20	25	.984	17	.669	9,5	.375	NG2L	CM75	MS1200
3483034	KM20NER325	KM20	25	.984	17	.669	9,5	.375	NG3L	CM73LP	MS524
2399462	KM25NER230	KM25	30	1.181	22	.866	12,5	.492	NG2L	CM75	MS1200
2399494	KM25NER330	KM25	30	1.181	22	.866	12,5	.492	NG3L	CM73LP	MS2111
2399496	KM25NER430	KM25	30	1.181	24	.945	12,5	.492	NG4L	CM73LP	MS2111
	left hand										
3483035	KM20NEL225	KM20	25	.984	17	.669	9,5	.375	NG2R	CM74	MS1200
3483033	KM20NEL325	KM20	25	.984	17	.669	9,5	.375	NG3R	CM72LP	MS524
2399493	KM25NEL230	KM25	30	1.181	22	.866	12,5	.492	NG2R	CM74	MS1200
2399495	KM25NEL330	KM25	30	1.181	22	.866	12,5	.492	NG3R	CM72LP	MS2111
2399497	KM25NEL430	KM25	30	1.181	24	.945	12,5	.492	NG4R	CM72LP	MS2111



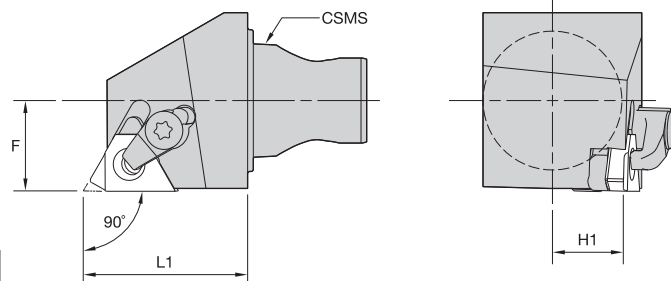
■ NS 93° • Side Mount

order number	catalog number	CSMS system size	L1		F		H1		gage insert	clamp	clamp screw
			mm	in	mm	in	mm	in			
right hand											
3483030	KM20NSR230	KM20	30	1.181	12,5	.492	9,5	.375	NG2R	CM74	MS1200
3483028	KM20NSR330	KM20	30	1.181	12,5	.492	9,5	.375	NG3R	CM72LP	MS524
2399498	KM25NSR230	KM25	30	1.181	16,0	.630	12,5	.492	NG2R	CM74	MS1200
2399500	KM25NSR330	KM25	30	1.181	16,0	.630	12,5	.492	NG3R	CM72LP	MS2111
2399502	KM25NSR430	KM25	30	1.181	16,0	.630	12,5	.492	NG4R	CM212LP	MS2111
left hand											
3483029	KM20NSL230	KM20	30	1.181	12,5	.492	9,5	.375	NG2L	CM75	MS1200
3483027	KM20NSL330	KM20	30	1.181	12,5	.492	9,5	.375	NG3L	CM73LP	MS524
2399499	KM25NSL230	KM25	30	1.181	16,0	.630	12,5	.492	NG2L	CM75	MS1200
2399501	KM25NSL330	KM25	30	1.181	16,0	.630	12,5	.492	NG3L	CM73LP	MS2111
2399503	KM25NSL430	KM25	30	1.181	16,0	.630	12,5	.492	NG4L	CM213LP	MS2111


■ LSE 90°

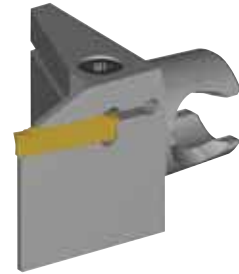
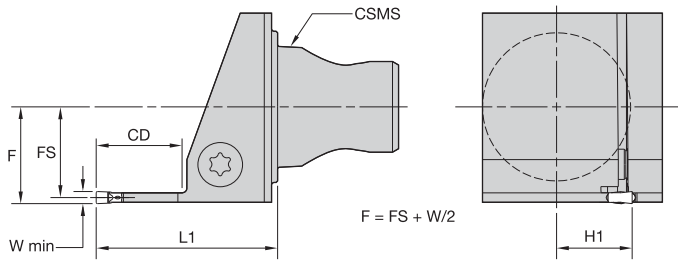

order number	catalog number	CSMS system size	L1		F		H1		gage insert	shim	insert screw	shim screw	clamp assembly
			mm	in	mm	in	mm	in					
right hand													
3482966	KM20LSER1625	KM20	25	.984	17	.669	9,5	.375	LT16EL	SMYI3	SSA3T	SSY3T	CKC3
2399506	KM25LSER1630	KM25	30	1.181	22	.866	12,5	.492	LT16EL	SMYI3	SSA3T	SSY3T	CKC3
left hand													
3482965	KM20LSEL1625	KM20	25	.984	17	.669	9,5	.375	LT16ER	SMYE3	SSA3T	SSY3T	CKC3
2399507	KM25LSEL1630	KM25	30	1.181	22	.866	12,5	.492	LT16ER	SMYE3	SSA3T	SSY3T	CKC3

NOTE: Cutting units are supplied with insert screw and clamp assembly. However, tools are designed to use either the insert screw or the clamp assembly, not both.


■ LSS 90°


order number	catalog number	CSMS system size	L1		F		H1		gage insert	shim	insert screw	shim screw	clamp assembly
			mm	in	mm	in	mm	in					
right hand													
3482968	KM20LSSR1625	KM20	25	.984	12,5	.492	9,5	.375	LT16ER	SMYE3	SSA3T	SSY3T	CKC3
2399504	KM25LSSR1630	KM25	30	1.181	16,0	.630	12,5	.492	LT16ER	SMYE3	SSA3T	SSY3T	CKC3
3176219	KM25LSSR2230	KM25	30	1.181	16,0	.630	12,5	.492	LT22ER	SMYE4	SSA4T	SSY4T	CKC4
left hand													
3482967	KM20LSSL1625	KM20	25	.984	12,5	.492	9,5	.375	LT16EL	SMYI3	SSA3T	SSY3T	CKC3
2399505	KM25LSSL1630	KM25	30	1.181	16,0	.630	12,5	.492	LT16EL	SMYI3	SSA3T	SSY3T	CKC3
3176220	KM25LSSL2230	KM25	30	1.181	16,0	.630	12,5	.492	LT22EL	SMYI4	SSA4T	SSY4T	CKC4

NOTE: Cutting units are supplied with insert screw and clamp assembly. However, tools are designed to use either the insert screw or the clamp assembly, not both.





■ A4SM • Side Mount

order number	catalog number	CSMS system size	seat size	L1		FS		W min		H1		CD	
				mm	in	mm	in	mm	in	mm	in		
right hand													
3482929	KM20A4SMR011330	KM20	1.5	30	1.181	11,8	.463	1,5	.059	9,5	.375	13,5	.53
3482931	KM20A4SMR021430	KM20	2	30	1.181	11,5	.453	2,0	.079	9,5	.375	14,0	.55
3482935	KM20A4SMR031430	KM20	3	30	1.181	11,0	.433	3,0	.118	9,5	.375	14,0	.55
3482937	KM20A4SMR041430	KM20	4	30	1.181	10,5	.413	4,0	.157	9,5	.375	14,0	.55
3482933	KM20A4SMR2B1430	KM20	2B	30	1.181	11,3	.443	2,5	.098	9,5	.375	14,0	.55
3377363	KM25A4SMR011330	KM25	1	30	1.181	15,3	.600	1,5	.059	12,5	.492	13,5	.53
3377291	KM25A4SMR021430	KM25	2	30	1.181	15,0	.591	2,0	.079	12,5	.492	14,0	.55
2399464	KM25A4SMR031430	KM25	3	30	1.181	14,5	.571	3,0	.118	12,5	.492	14,0	.55
2399466	KM25A4SMR041430	KM25	4	30	1.181	14,0	.551	4,0	.157	12,5	.492	14,0	.55
2399468	KM25A4SMR051935	KM25	5	35	1.378	13,5	.531	5,0	.197	12,5	.492	19,0	.75
3377289	KM25A4SMR2B1430	KM25	2B	30	1.181	14,8	.581	2,5	.098	12,5	.492	14,0	.55
left hand													
3482928	KM20A4SML011330	KM20	1.5	30	1.181	11,8	.463	1,5	.059	9,5	.375	13,5	.53
3482930	KM20A4SML021430	KM20	2	30	1.181	11,5	.453	2,0	.079	9,5	.375	14,0	.55
3482934	KM20A4SML031430	KM20	3	30	1.181	11,0	.433	3,0	.118	9,5	.375	14,0	.55
3482936	KM20A4SML041430	KM20	4	30	1.181	10,5	.413	4,0	.157	9,5	.375	14,0	.55
3482932	KM20A4SML2B1430	KM20	2B	30	1.181	11,3	.443	2,5	.098	9,5	.375	14,0	.55
3377292	KM25A4SML011330	KM25	1	30	1.181	15,3	.600	1,5	.059	12,5	.492	13,5	.53
3377290	KM25A4SML021430	KM25	2	30	1.181	15,0	.591	2,0	.079	12,5	.492	14,0	.55
2399465	KM25A4SML031430	KM25	3	30	1.181	14,5	.571	3,0	.118	12,5	.492	14,0	.55
2399467	KM25A4SML041430	KM25	4	30	1.181	14,0	.551	4,0	.157	12,5	.492	14,0	.55
2399469	KM25A4SML051935	KM25	5	35	1.378	13,5	.531	5,0	.197	12,5	.492	19,0	.75
3377288	KM25A4SML2B1430	KM25	2B	30	1.181	14,8	.581	2,5	.098	12,5	.492	14,0	.55

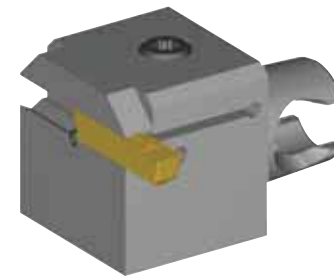
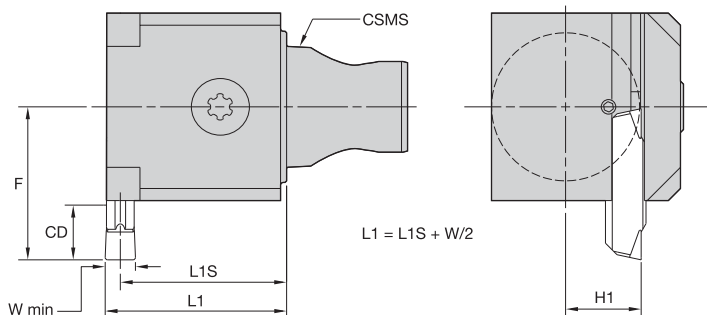
(continued)

(A4SM • Side Mount continued)

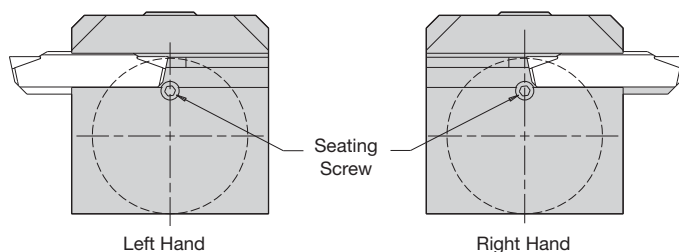
■ Spare Parts

catalog number	 clamp screw	 clamp screw
right hand		
KM20A4SMR011330	MS1156	—
KM20A4SMR021430	MS1160	—
KM20A4SMR031430	MS1160	—
KM20A4SMR041430	MS1160	—
KM20A4SMR2B1430	MS1160	—
KM25A4SMR011330	MS1156	—
KM25A4SMR021430	MS1160	—
KM25A4SMR031430	—	MS2091
KM25A4SMR041430	—	MS2091
KM25A4SMR051935	—	MS2091
KM25A4SMR2B1430	MS1160	—
left hand		
KM20A4SML011330	MS1156	—
KM20A4SML021430	MS1160	—
KM20A4SML031430	MS1160	—
KM20A4SML041430	MS1160	—
KM20A4SML2B1430	MS1160	—
KM25A4SML011330	MS1156	—
KM25A4SML021430	MS1160	—
KM25A4SML031430	—	MS2091
KM25A4SML041430	—	MS2091
KM25A4SML051935	—	MS2091
KM25A4SML2B1430	MS1160	—

NOTE: W min supplied for reference only. See the Kennametal Innovations Master Catalog Cutting Tools 2013 for actual insert width.
 Always match seat size of insert to seat size of holder.
 Seat size 2B cutting units only accepts 2B inserts.
 Seat size 2 cutting units accepts 2 or 2B inserts.



A4EN Insert Mounting



A4EN-style cutting units can be used for either left- or right-hand applications.



■ A4EN • End Mount

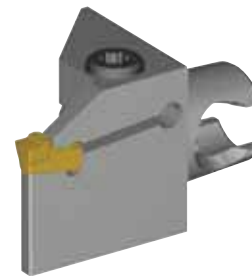
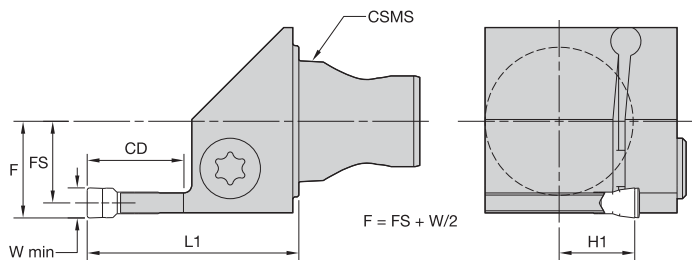
order number	catalog number	CSMS system size	seat size	L1S		F		W min		H1		CD	
				mm	in	mm	in	mm	in	mm	in		
2399470	KM25A4ENN040730	KM25	4	28	1.102	23	.906	4,0	.157	12,5	.492	7	.276
2399471	KM25A4ENN050930	KM25	5	28	1.083	25	.996	5,0	.197	12,5	.492	9	.354

■ Spare Parts



catalog number	clamp screw
KM25A4ENN040730	MS2091
KM25A4ENN050930	MS2091

NOTE: A4EN-style cutting units are designed without steel support for face grooving capacity. Cutting feed recommendations should be reduced by 25–30%.
W min supplied for reference only. See the Kennametal Innovations Master Catalog Cutting Tools 2013 for actual insert width. Always match seat size of insert to seat size of holder.

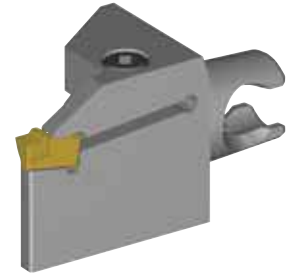
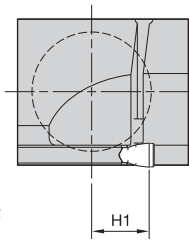
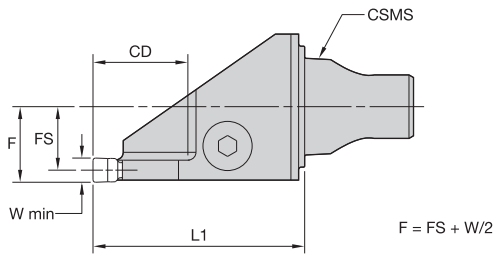

■ A3SS • Deep Groove

order number	catalog number	CSMS system size	seat size	L1		FS		W min		H1		CD	
				mm	in	mm	in	mm	in	mm	in		
right hand													
2399513	KM25A3SSR031635	KM25	3	35,0	1.378	15	.571	3	.12	12,5	.492	16	.63
2399515	KM25A3SSR041635	KM25	4	34,9	1.374	14	.551	4	.16	12,5	.492	16	.63
2399517	KM25A3SSR042645	KM25	4	45,0	1.772	14	.551	4	.16	12,5	.492	26	1.02
2399519	KM25A3SSR051635	KM25	5	35,0	1.378	14	.531	5	.20	12,5	.492	16	.63
2399521	KM25A3SSR052645	KM25	5	45,0	1.772	14	.531	5	.20	12,5	.492	26	1.02
left hand													
2399514	KM25A3SSL031635	KM25	3	35,0	1.378	15	.571	3	.12	12,5	.492	16	.63
2399516	KM25A3SSL041635	KM25	4	34,9	1.374	14	.551	4	.16	12,5	.492	16	.63
2399518	KM25A3SSL042645	KM25	4	45,0	1.772	14	.551	4	.16	12,5	.492	26	1.02
2399520	KM25A3SSL051635	KM25	5	35,0	1.378	14	.531	5	.20	12,5	.492	16	.63
2399522	KM25A3SSL052645	KM25	5	45,0	1.772	14	.531	5	.20	12,5	.492	26	1.02

■ Spare Parts


catalog number	clamp screw
right hand	
KM25A3SSR031635	MS1944
KM25A3SSR041635	MS1595
KM25A3SSR042645	MS1595
KM25A3SSR051635	MS1595
KM25A3SSR052645	MS1595
left hand	
KM25A3SSL031635	MS1944
KM25A3SSL041635	MS1595
KM25A3SSL042645	MS1595
KM25A3SSL051635	MS1595
KM25A3SSL052645	MS1595

NOTE: W min supplied for reference only. See the Kennametal Innovations Master Catalog Cutting Tools 2013 for actual insert width. Always match seat size of insert to seat size of holder.



■ **A3SC • Cut-Off**

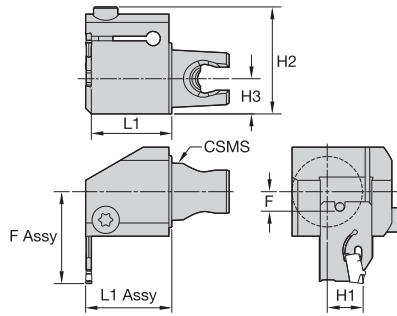
order number	catalog number	CSMS system size	seat size	L1		FS		W min		H1		CD	
				mm	in	mm	in	mm	in	mm	in	mm	in
right hand													
3482925	KM20A3SCR031635	KM20	3	35	1.378	11,00	.433	3,0	.118	9,5	.375	16	.63
3482927	KM20A3SCR041635	KM20	4	35	1.378	10,50	.413	4,0	.157	9,5	.375	16	.63
left hand													
3482924	KM20A3SCL031635	KM20	3	35	1.378	11,00	.433	3,0	.118	9,5	.375	16	.63
3482926	KM20A3SCL041635	KM20	4	35	1.378	10,50	.413	4,0	.157	9,5	.375	16	.63

■ **Spare Parts**



catalog number	clamp screw
right hand	
KM20A3SCR031635	MS1322
KM20A3SCR041635	MS1322
left hand	
KM20A3SCL031635	MS1322
KM20A3SCL041635	MS1322

NOTE: W min supplied for reference only. See the Kennametal Innovations Master Catalog Cutting Tools 2013 for actual insert width.
Always match seat size of insert to seat size of holder.



L1 Assy = L1 + F Blade
F Assy = F + L1 Blade

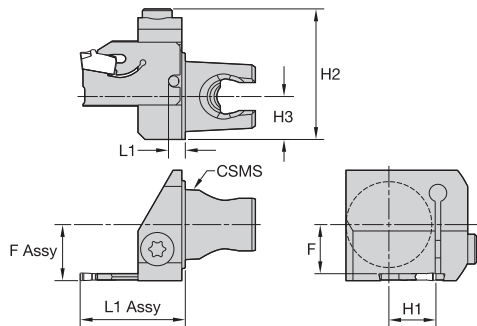


■ BE • End Mount



order number	catalog number	CSMS system size	L1		F		H1		H2		H3		clamp screw	cartridge 1
			mm	in	mm	in	mm	in	mm	in	mm	in		
2426882	right hand KM25BER	KM25	28	1.103	6,8	.268	12,5	.492	37,3	1.466	12,3	.482	MS1898PKG	A2BHSN19X...
2427293	left hand KM25BEL	KM25	28	1.103	6,8	.268	12,5	.492	37,3	1.466	12,3	.482	MS1898PKG	A2BHSN19X...

NOTE: For blades, see page A162.



L1 Assy = L1 + L1 Blade
F Assy = F + F Blade

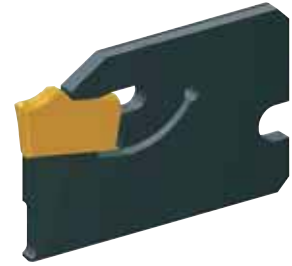
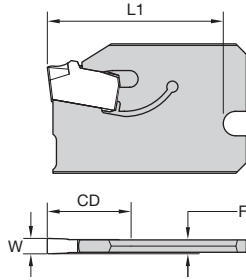


■ BS • Side Mount



order number	catalog number	CSMS system size	L1		F		H1		H2		H3		clamp screw	cartridge 1
			mm	in	mm	in	mm	in	mm	in	mm	in		
2426880	right hand KM25BSR	KM25	4,8	.189	14	.552	12,5	.492	37,3	1.466	12,3	.482	MS1898PKG	A2BHSN19X...
2426881	left hand KM25BSL	KM25	4,8	.189	14	.552	12,5	.492	37,3	1.466	12,3	.482	MS1898PKG	A2BHSN19X...

NOTE: For blades, see page A162.



■ A2BHSN

order number	catalog number	seat size	CD	W	F	L1
1984998	A2BHSN19X0116	1	16,0	1,6	1,7	25,2
1851800	A2BHSN19X0211	2	11,0	2,2	2,0	20,2
1851799	A2BHSN19X0216	2	16,0	2,2	2,0	25,2



ERICKSON™ & KM™

Names You Can Trust

For hydraulic chucks — ERICKSON and KM — the industry names you can trust.

- Most accurate chuck, $\leq 3\mu\text{m}$ (.0001"), achieves maximum performance from your cutting edge.
- Inherent dampening design extends tool life and improves surface finish.
- Pre-balanced to high specifications.
- Versatile as a collet chuck with the use of reduction sleeves.

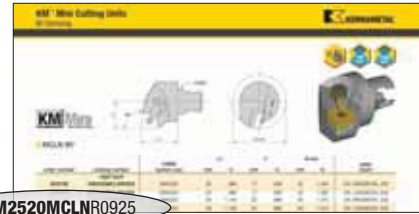
Experience the advantages at your Authorized Kennametal Distributor or at www.kennametal.com.

www.kennametal.com



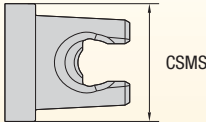
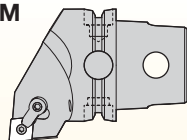
How Do Catalog Numbers Work?

Each character in our catalog number signifies a specific trait of that product. Use the following key columns and corresponding images to easily identify which attributes apply.

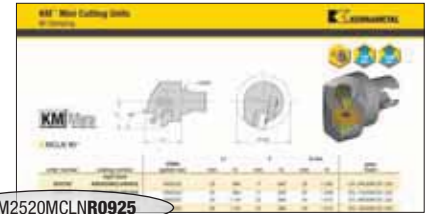


KM2520MCLNR0925



KM	2520	M	C	L	N
Kennametal Modular	System Size	Insert Holding Method	Insert Shape	Toolholder Style	Insert Clearance Angle
	<p>2520 = 25mm 3225 = 32mm</p>  <p>CSMS</p>	<p>M</p>  <p>M-Clamping Top and/or hole clamping for inserts with hole</p>	<p>C 80°</p> <p>D 55°</p> <p>K 55°</p> <p>R</p> <p>S 90°</p> <p>T 60°</p> <p>V 35°</p> <p>W 80°</p>	<p>D 45°</p> <p>E 30°</p> <p>F 0°</p> <p>G 0°</p> <p>H 50°</p> <p>J 3°</p> <p>K 15°</p> <p>L 5°</p> <p>N 63°</p> <p>P 27° 30'</p>	<p>B 5°</p> <p>C 7°</p> <p>N 0°</p> <p>P 11°</p> <p>Q 17° 30'</p> <p>R 15°</p> <p>S 45°</p> <p>U 3°</p> <p>V 17° 30'</p> <p>X 120°</p>

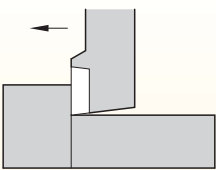
By referencing this easy-to-use guide, you can identify the correct product to meet your needs.



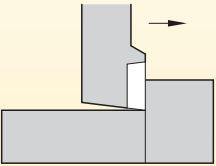
KM2520MCLNR0925

R

Hand of Tool



L = Left-hand cutting unit



R = Right-hand cutting unit

09

Insert Size
Cutting Edge
Length L10

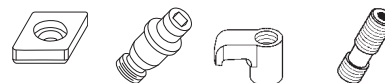
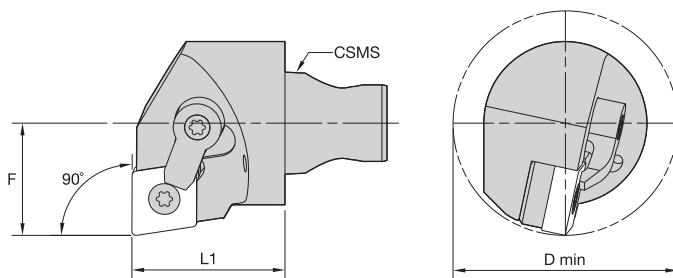
Metric

IC	C	D	K	R	S	T	V	W
3,97		04		03	03	06		
4,76	04	05		04	04	08	08	S3
5,56	05	06	03	05	05	09	09	03
6,00				06				
6,35	06	07	04	06	06	11	11	04
7,94	08	09	05	07	07	13	13	05
8,00				08			11	
9,52	09	11	06	09	09	16	16	06
9,52								
10,00				10				
11,11	11	13	07	11	11	19	19	07
12,00				12				
12,70	12	15	08	12	12	22	22	08
14,29	14	17	09	14	14	24	24	09
15,88	16	19	10	15	15	27	27	10
16,00				16				
17,46	17	21	11	17	17	30	30	11
19,05	19	23	13	19	19	33	33	13
20,00				20				
22,22	22	27	15	22	22	38	38	15
25,00				25				
25,40	25	31	17	25	25	44	44	17
31,75	32	38	21	31	31	54	54	21
32,00				32				

25

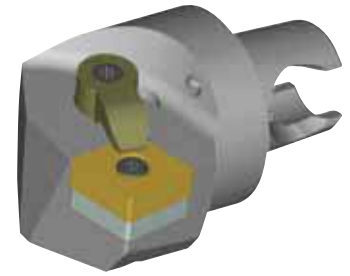
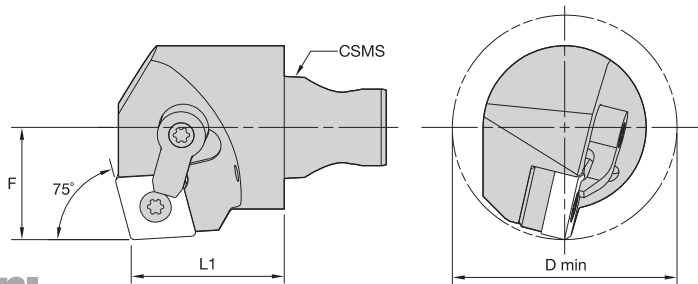
Gage
Length

- 25 = 25mm
- 30 = 30mm
- 45 = 45mm
- 120 = 120mm



■ MCFN 90°





order number	catalog number	CSMS system size	L1		F		D min		gage insert	shim	lock pin	clamp	clamp screw
			mm	in	mm	in	mm	in					
right hand													
2527431	KM3225MCFNR1230	KM3225	30	1.181	22	.866	40	1.575	CN..120408/CN..432	ICSN432	KLM4615IP	CKM20LP	STCM1115IP
left hand													
2527432	KM3225MCFNL1230	KM3225	30	1.181	22	.866	40	1.575	CN..120408/CN..432	ICSN432	KLM4615IP	CKM20LP	STCM1115IP

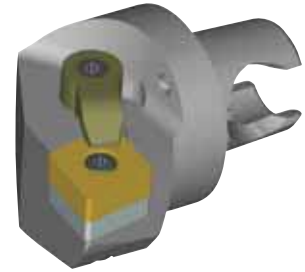
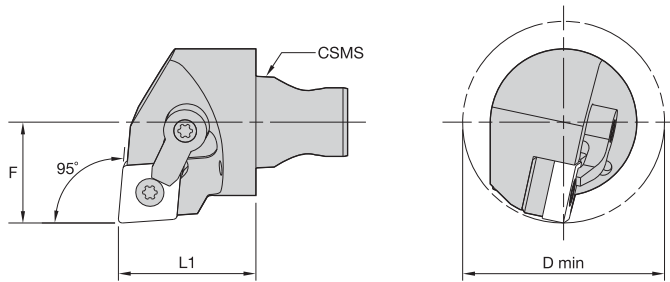


■ MCKN 75°

order number	catalog number	CSMS system size	L1		F		D min		gage insert
			mm	in	mm	in	mm	in	
	right hand								
2527433	KM3225MCKNR1230	KM3225	30	1.181	22	.866	40	1.57	CN..120408/CN..432
	left hand								
2527434	KM3225MCKNL1230	KM3225	30	1.181	22	.866	40	1.57	CN..120408/CN..432

■ Spare Parts

catalog number	 shim	 lock pin	 clamp	 clamp screw
right hand KM3225MCKNR1230	ICSN432	KLM4615IP	CKM20LP	STCM1115IP
left hand KM3225MCKNL1230	ICSN432	KLM4615IP	CKM20LP	STCM1115IP



■ MCLN 95°

order number	catalog number	CSMS system size	L1		F		D min		gage insert
			mm	in	mm	in	mm	in	
right hand									
3503780	KM2520MCLNR0925	KM2520	25	.984	17	.669	32	1.260	CN..090308/CN..332
3503782	KM2520MCLNR1225	KM2520	25	.984	17	.669	32	1.260	CN..120408/CN..432
2527435	KM3225MCLNR0930	KM3225	30	1.181	22	.866	40	1.575	CN..090308/CN..322
2527437	KM3225MCLNR1230	KM3225	30	1.181	22	.866	40	1.575	CN..120408/CN..432
left hand									
3503779	KM2520MCLNL0925	KM2520	25	.984	17	.669	32	1.260	CN..090308/CN..332
3503781	KM2520MCLNL1225	KM2520	25	.984	17	.669	32	1.260	CN..120408/CN..432
2527436	KM3225MCLNL0930	KM3225	30	1.181	22	.866	40	1.575	CN..090308/CN..322
2527438	KM3225MCLNL1230	KM3225	30	1.181	22	.866	40	1.575	CN..120408/CN..432

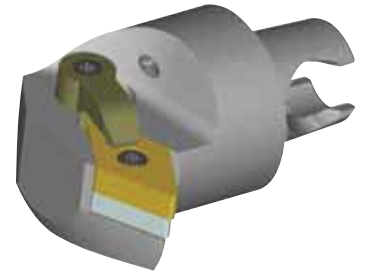
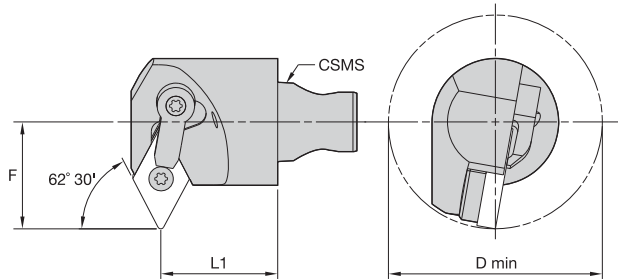
■ Spare Parts



catalog number	shim	lock pin	clamp	clamp screw
right hand				
KM2520MCLNR0925	—	KLM33	CKM7LP	STCM38
KM2520MCLNR1225	—	KLM43	CKM20LP	STCM35
KM3225MCLNR0930	ICSN332	KLM34LT9PKG	CKM7LP	STCM9T9
KM3225MCLNR1230	ICSN432	KLM4615IP	CKM20LP	STCM1115IP
left hand				
KM2520MCLNL0925	—	KLM33	CKM7LP	STCM38
KM2520MCLNL1225	—	KLM43	CKM20LP	STCM35
KM3225MCLNL0930	ICSN332	KLM34LT9PKG	CKM7LP	STCM9T9
KM3225MCLNL1230	ICSN432	KLM4615IP	CKM20LP	STCM1115IP



KM Mini Cutting Units



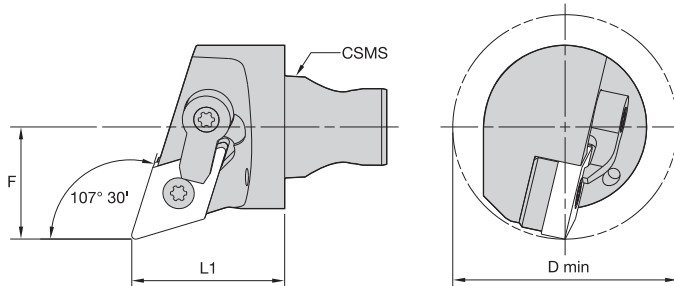
■ **MDPN 62° 30'**

order number	catalog number	CSMS system size	L1		F		D min		gage insert
			mm	in	mm	in	mm	in	
	right hand								
2527441	KM3225MDPNR1130	KM3225	30	1.181	22	.866	40	1.57	DN..110408/DN..332
2527439	KM3225MDPNR150430	KM3225	30	1.181	27	1.063	50	1.97	DN..150408/DN..432
	left hand								
2527442	KM3225MDPNL1130	KM3225	30	1.181	22	.866	40	1.57	DN..110408/DN..332
2527440	KM3225MDPNL150430	KM3225	30	1.181	27	1.063	50	1.97	DN..150408/DN..432

■ **Spare Parts**



catalog number	shim	lock pin	clamp	clamp screw
right hand				
KM3225MDPNR1130	IDSN322	KLM34LT9PKG	CKM7LP	STCM9T9
KM3225MDPNR150430	IDSN432	KLM4615IP	CKM23LP	STCM1115IP
left hand				
KM3225MDPNL1130	IDSN322	KLM34LT9PKG	CKM7LP	STCM9T9
KM3225MDPNL150430	IDSN432	KLM4615IP	CKM23LP	STCM1115IP



■ MDQN 107° 30'

order number	catalog number	CSMS system size	L1		F		D min		gage insert
			mm	in	mm	in	mm	in	
	right hand								
2527445	KM3225MDQNR1130	KM3225	30	1.181	22	.866	40	1.57	DN..110408/DN..332
2527443	KM3225MDQNR150430	KM3225	30	1.181	22	.866	40	1.57	DN..150408/DN..432
	left hand								
2527446	KM3225MDQNL1130	KM3225	30	1.181	22	.866	40	1.57	DN..110408/DN..332
2527444	KM3225MDQNL150430	KM3225	30	1.181	22	.866	40	1.57	DN..150408/DN..432

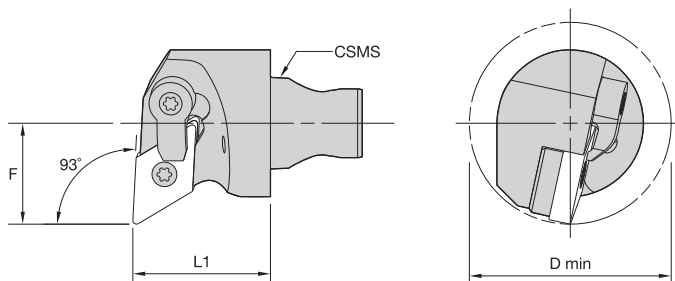
■ Spare Parts



catalog number	shim	lock pin	clamp	clamp screw
right hand				
KM3225MDQNR1130	IDSN322	KLM34LT9PKG	CKM7LP	STCM9T9
KM3225MDQNR150430	IDSN432	KLM4615IP	CKM20LP	STCM1115IP
left hand				
KM3225MDQNL1130	IDSN322	KLM34LT9PKG	CKM7LP	STCM9T9
KM3225MDQNL150430	IDSN432	KLM4615IP	CKM20LP	STCM1115IP



KM Mini Cutting Units



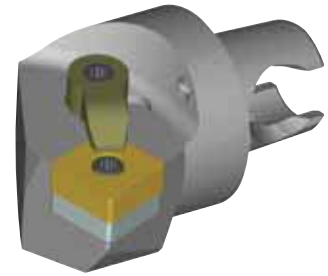
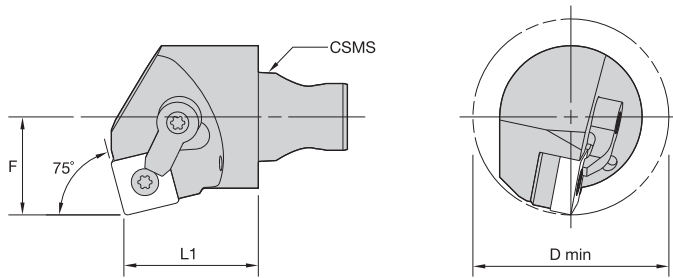
■ MDUN 93°

order number	catalog number	CSMS system size	L1		F		D min		gage insert
			mm	in	mm	in	mm	in	
right hand									
3503814	KM2520MDUNR1125	KM2520	25	.984	17	.669	32	1.26	DN..110408/DN..332
3503816	KM2520MDUNR1525	KM2520	25	.984	17	.669	32	1.26	DN..150408/DN..432
2527449	KM3225MDUNR1130	KM3225	30	1.181	22	.866	40	1.57	DN..110408/DN..332
2527447	KM3225MDUNR150430	KM3225	30	1.181	22	.866	40	1.57	DN..150408/DN..432
left hand									
3503813	KM2520MDUNL1125	KM2520	25	.984	17	.669	32	1.26	DN..110408/DN..332
3503815	KM2520MDUNL1525	KM2520	25	.984	17	.669	32	1.26	DN..150408/DN..432
2527450	KM3225MDUNL1130	KM3225	30	1.181	22	.866	40	1.57	DN..110408/DN..332
2527448	KM3225MDUNL150430	KM3225	30	1.181	22	.866	40	1.57	DN..150408/DN..432

■ Spare Parts



catalog number	shim	lock pin	clamp	clamp screw
right hand				
KM2520MDUNR1125	—	KLM33L	CKM7LP	STCM38
KM2520MDUNR1525	—	KLM43	—	—
KM3225MDUNR1130	IDSN322	KLM34LT9PKG	CKM7LP	STCM9T9
KM3225MDUNR150430	IDSN432	KLM4615IP	CKM20LP	STCM1115IP
left hand				
KM2520MDUNL1125	—	KLM33L	CKM7LP	STCM38
KM2520MDUNL1525	—	KLM43	—	—
KM3225MDUNL1130	IDSN322	KLM34LT9PKG	CKM7LP	STCM9T9
KM3225MDUNL150430	IDSN432	KLM4615IP	CKM20LP	STCM1115IP



■ **MSKN 75°**

order number	catalog number	CSMS system size	L1		F		D min		gage insert
			mm	in	mm	in	mm	in	
	right hand								
3503818	KM2520MSKNR1225	KM2520	25	.984	17	.669	32	1.26	SN..120408/SN..432
2527451	KM3225MSKNR1230	KM3225	30	1.181	22	.866	40	1.57	SN..120408/SN..432
	left hand								
3503817	KM2520MSKNL1225	KM2520	25	.984	17	.669	32	1.26	SN..120408/SN..432
2527452	KM3225MSKNL1230	KM3225	30	1.181	22	.866	40	1.57	SN..120408/SN..432

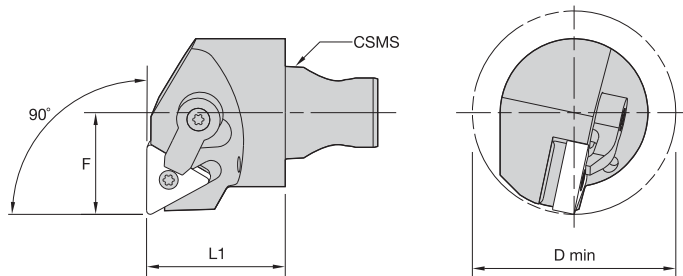
■ **Spare Parts**



catalog number	shim	lock pin	clamp	clamp screw
right hand				
KM2520MSKNR1225	—	KLM43	CKM20LP	STCM11
KM3225MSKNR1230	ISSN432	KLM4615IP	CKM20LP	STCM1115IP
left hand				
KM2520MSKNL1225	—	KLM43	CKM20LP	STCM11
KM3225MSKNL1230	ISSN432	KLM4615IP	CKM20LP	STCM1115IP



KM Mini Cutting Units



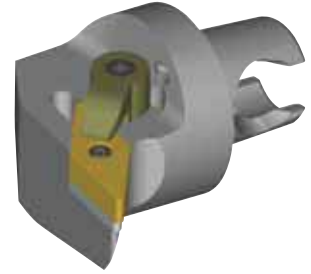
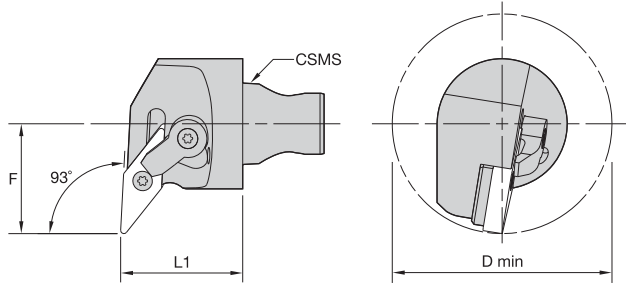
■ MTFN 90°

order number	catalog number	CSMS system size	L1		F		D min		gage insert
			mm	in	mm	in	mm	in	
right hand									
3503820	KM2520MTFNR1625	KM2520	25	.984	17	.669	32	1.26	TN..160408/TN..332
2527453	KM3225MTFNR1630	KM3225	30	1.181	22	.866	40	1.57	TN..160408/TN..332
2527455	KM3225MTFNR2230	KM3225	30	1.181	22	.866	40	1.57	TN..220408/TN..432
left hand									
3503819	KM2520MTFNL1625	KM2520	25	.984	17	.669	32	1.26	TN..160408/TN..332
2527454	KM3225MTFNL1630	KM3225	30	1.181	22	.866	40	1.57	TN..160408/TN..332
2527456	KM3225MTFNL2230	KM3225	30	1.181	22	.866	40	1.57	TN..220408/TN..432

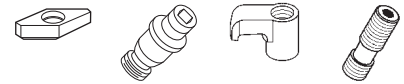
■ Spare Parts



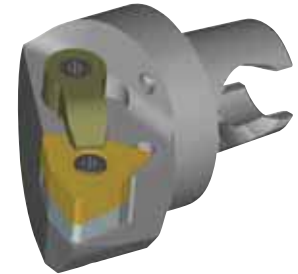
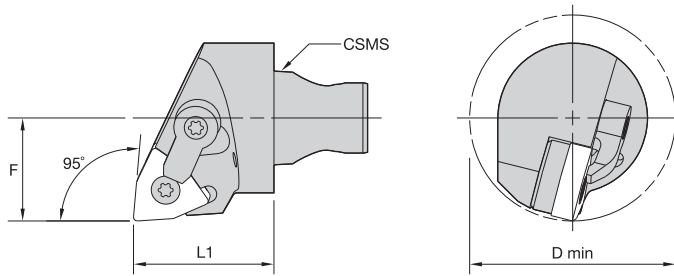
catalog number	shim	lock pin	clamp	clamp screw
right hand				
KM2520MTFNR1625	—	KLM33L	CKM7LP	STCM38
KM3225MTFNR1630	ITSN323	KLM34L9IP	CKM20LP	STCM119IP
KM3225MTFNR2230	ITSN433	KLM4615IP	CKM20LP	STCM1115IP
left hand				
KM2520MTFNL1625	—	KLM33L	CKM7LP	STCM38
KM3225MTFNL1630	ITSN323	KLM34L9IP	CKM20LP	STCM119IP
KM3225MTFNL2230	ITSN433	KLM4615IP	CKM20LP	STCM1115IP



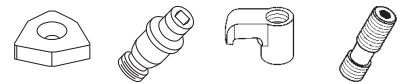
■ MVUN 93°



order number	catalog number	CSMS system size	L1		F		D min		gage insert	shim	lock pin	clamp	clamp screw
			mm	in	mm	in	mm	in					
right hand													
3503822	KM2520MVUNR1625	KM2520	25	.984	22	.866	40	1.57	VN..160408/VN..332	—	KLM33L	CKM7LP	STCM38
2527457	KM3225MVUNR1630	KM3225	30	1.181	27	1.063	50	1.97	VN..160408/VN..332	IVSN322	KLM34L9IP	CKM20LP	STCM119IP
left hand													
3503821	KM2520MVUNL1625	KM2520	25	.984	22	.866	40	1.57	VN..160408/VN..332	—	KLM33L	CKM7LP	STCM38
2527458	KM3225MVUNL1630	KM3225	30	1.181	27	1.063	50	1.97	VN..160408/VN..332	IVSN322	KLM34L9IP	CKM20LP	STCM119IP



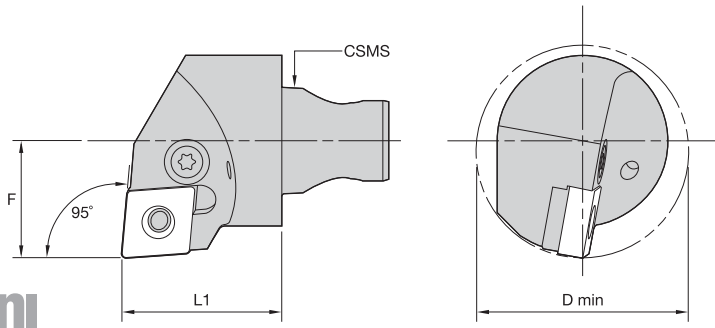
■ MWLN 95°



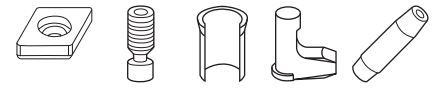
order number	catalog number	CSMS system size	L1		F		D min		gage insert	shim	lock pin	clamp	clamp screw
			mm	in	mm	in	mm	in					
right hand													
3503824	KM2520MWLNR0625	KM2520	25	.984	17	.669	32	1.26	WN..060408/WN.332	—	KLM33	CKM7LP	STCM38
3503826	KM2520MWLNR0825	KM2520	25	.984	17	.669	32	1.26	WN..080408/WN..432	—	KLM43	CKM7LP	STCM38
2527459	KM3225MWLNR0830	KM3225	30	1.181	22	.866	40	1.57	WN..080408/WN..432	IWSN433	KLM4615IP	CKM20LP	STCM1115IP
left hand													
3503823	KM2520MWLNL0625	KM2520	25	.984	17	.669	32	1.26	WN..060408/WN.332	—	KLM33	CKM7LP	STCM38
3503825	KM2520MWLNL0825	KM2520	25	.984	17	.669	32	1.26	WN..080408/WN..432	—	KLM43	CKM7LP	STCM38
2527460	KM3225MWLNL0830	KM3225	30	1.181	22	.866	40	1.57	WN..080408/WN..432	IWSN433	KLM4615IP	CKM20LP	STCM1115IP



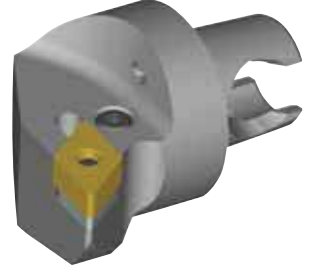
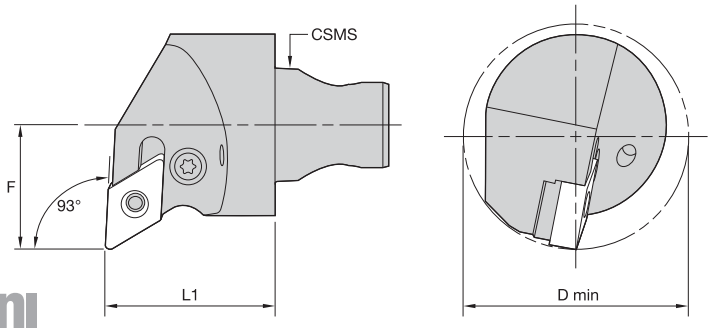
KM Mini Cutting Units



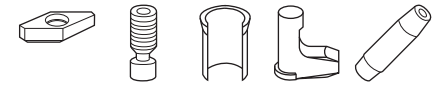
■ PCLN 95°



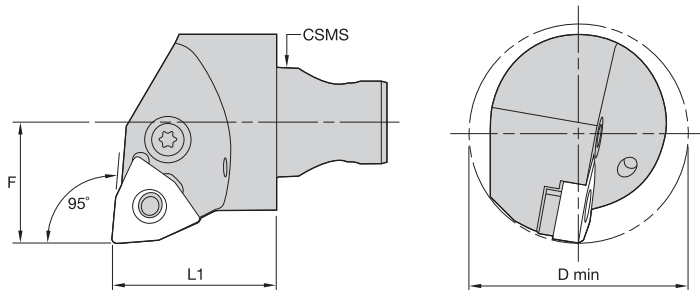
order number	catalog number	CSMS system size	L1		F		D min		gage insert	shim	lever screw	shim pin	toggle lever	punch
			mm	in	mm	in	mm	in						
right hand														
3482970	KM2520PCLNR1225	KM2520	25	.984	17	.669	32	1.26	CN..120408/CN..432	—	514.122	—	511.022	—
2527461	KM3225PCLNR1230	KM3225	30	1.181	22	.866	40	1.57	CN..120408/CN..432	512.112	514.123	513.023	511.023	515.018
left hand														
3482969	KM2520PCLNL1225	KM2520	25	.984	17	.669	32	1.26	CN..120408/CN..432	—	514.122	—	511.022	—
2527462	KM3225PCLNL1230	KM3225	30	1.181	22	.866	40	1.57	CN..120408/CN..432	512.112	514.123	513.023	511.023	515.018



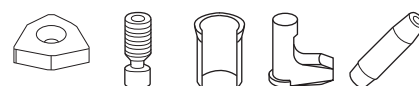
■ PDUN 93°



order number	catalog number	CSMS system size	L1		F		D min		gage insert	shim	lever screw	shim pin	toggle lever	punch
			mm	in	mm	in	mm	in						
right hand														
3482972	KM2520PDUNR1125	KM2520	25	.984	17	.669	32	1.26	DN..110408/DN..332	512.060	514.118	513.060	511.060	515.018
2527463	KM3225PDUNR1130	KM3225	30	1.181	22	.866	40	1.57	DN..110408/DN..332	512.060	514.118	513.060	511.060	515.018
left hand														
3482971	KM2520PDUNL1125	KM2520	25	.984	17	.669	32	1.26	DN..110408/DN..332	512.060	514.118	513.060	511.060	515.018
2527464	KM3225PDUNL1130	KM3225	30	1.181	22	.866	40	1.57	DN..110408/DN..332	512.060	514.118	513.060	511.060	515.018



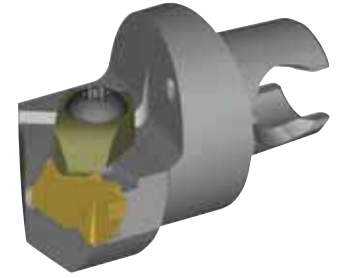
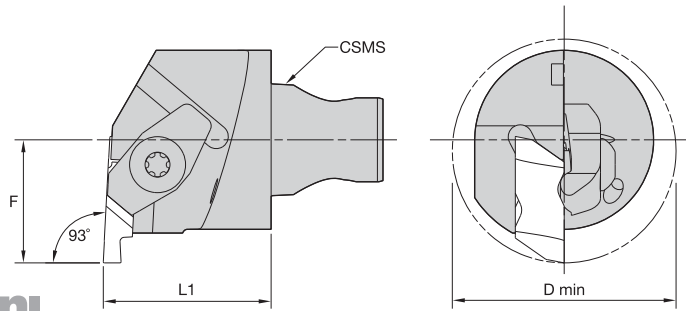
■ PWLN 95°



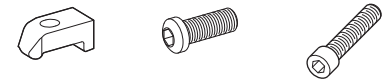
order number	catalog number	CSMS system size	L1		F		D min		gage insert	shim	lever screw	shim pin	toggle lever	punch
			mm	in	mm	in	mm	in						
right hand														
3483024	KM2520PWLNR0625	KM2520	25	.984	17	.669	32	1.26	WN..060408/WN..332	—	514.112	—	511.030	—
2527465	KM3225PWLNR0830	KM3225	30	1.181	22	.866	40	1.57	WN..080408/WN..432	512.135	514.123	513.023	511.023	515.018
left hand														
3483023	KM2520PWLNL0625	KM2520	25	.984	17	.669	32	1.26	WN..060408/WN..332	—	514.112	—	511.030	—
2527466	KM3225PWLNL0830	KM3225	30	1.181	22	.866	40	1.57	WN..080408/WN..432	512.135	514.123	513.023	511.023	515.018



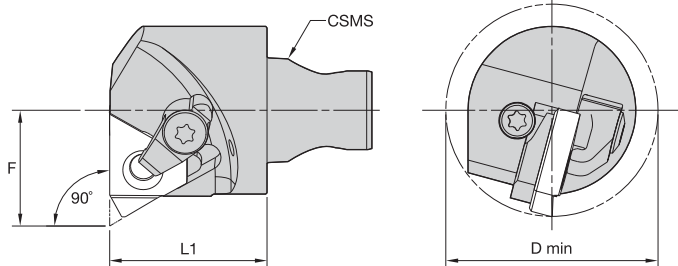
KM Mini Cutting Units



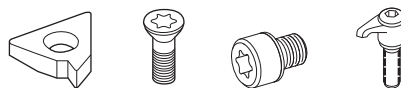
■ NE 93° • End Mount



order number	catalog number	CSMS system size	L1		F		D min		gage insert	clamp	clamp screw	clamp screw
			mm	in	mm	in	mm	in				
right hand												
3546332	KM2520NER230	KM2520	30	1.181	17	.669	32	1.26	NG2L	CM75	—	MS1488
3546644	KM2520NER330	KM2520	30	1.181	17	.669	34	1.34	NG3L	CM73LP	—	MS1489
2527467	KM3225NER230	KM3225	30	1.181	22	.866	40	1.57	NG2L	CM75	—	MS1488
2387557	KM3225NER330	KM3225	30	1.181	22	.866	40	1.57	NG3L	CM73LP	MS2111	—
2527470	KM3225NER430	KM3225	30	1.181	27	1.063	50	1.97	NG4L	CM73LP	MS2111	—
left hand												
3546331	KM2520NEL230	KM2520	30	1.181	17	.669	32	1.26	NG2R	CM74	—	MS1488
3546643	KM2520NEL330	KM2520	30	1.181	17	.669	34	1.34	NG3R	CM72LP	—	MS1489
2527468	KM3225NEL230	KM3225	30	1.181	22	.866	40	1.57	NG2R	CM74	—	MS1488
2527469	KM3225NEL330	KM3225	30	1.181	22	.866	40	1.57	NG3R	CM72LP	MS2111	—
2527471	KM3225NEL430	KM3225	30	1.181	27	1.063	50	1.97	NG4R	CM72LP	MS2111	—



■ LSE • 90°



order number	catalog number	CSMS system size	L1		F		D min		gage insert	shim	insert screw	shim screw	clamp assembly
			mm	in	mm	in	mm	in					
right hand													
3505968	KM2520LSE1625	KM2520	25	.984	17	.669	32	1.26	LT16NR	SMY13	SSA3T	SSY3T	CKC3
3505970	KM2520LSE2225	KM2520	25	.984	17	.669	32	1.26	LT22NR	SMY14	SSA4T	SSY4T	CKC4
2527474	KM3225LSE1630	KM3225	30	1.181	22	.866	40	1.57	LT16NR	SMY13	SSA3T	SSY3T	CKC3
2527472	KM3225LSE2230	KM3225	30	1.181	22	.866	40	1.57	LT22NR	SMY14	SSA4T	SSY4T	CKC4
left hand													
3505967	KM2520LSEL1625	KM2520	25	.984	17	.669	32	1.26	LT16NL	SMYE3	SSA3T	SSY3T	CKC3
3505969	KM2520LSEL2225	KM2520	25	.984	17	.669	32	1.26	LT22NL	SMYE4	SSA4T	SSY4T	CKC4
2527475	KM3225LSEL1630	KM3225	30	1.181	22	.866	40	1.57	LT16NL	SMYE3	SSA3T	SSY3T	CKC3
2527473	KM3225LSEL2230	KM3225	30	1.181	22	.866	40	1.57	LT22NL	SMYE4	SSA4T	SSY4T	CKC4

NOTE: Cutting units are supplied with insert screw and clamp assembly. However, tools are designed to use either the insert screw or the clamp assembly, not both.



More than just the right tool • the ultimate solution.

That's **Beyond BLAST™** 
That's **Different Thinking.**

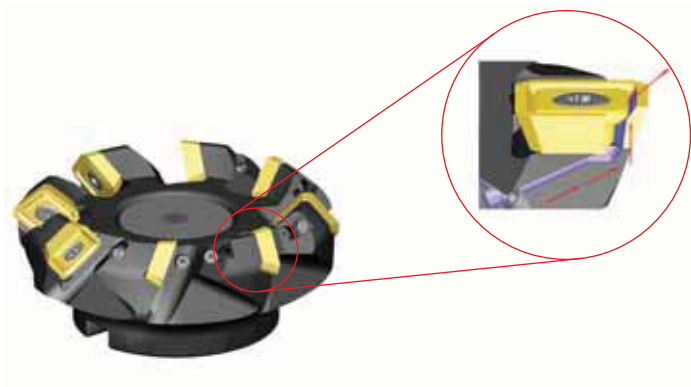
At Kennametal, innovation follows vision. Our revolutionary products and services are inspired by asking “what if?” The solutions that follow — like our Beyond BLAST through-coolant inserts — deliver remarkable results in the world’s most demanding machining environments.

A cutting-edge insert that delivers coolant precisely at the cutting edge. Now that’s Different Thinking. That’s Kennametal.

To learn more about your productivity gains using Beyond BLAST technology, visit www.kennametal.com.

Milling

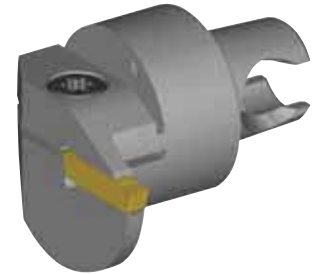
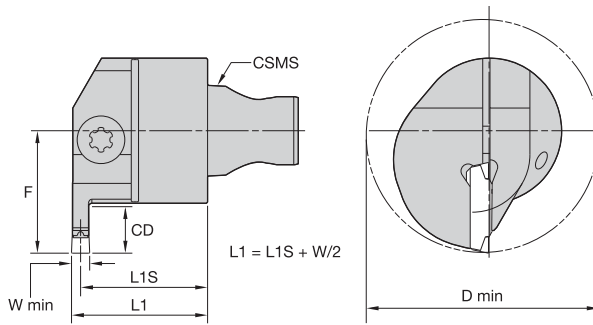
- Beyond BLAST technology uses low-pressure conditions to offer many of the high-pressure performance benefits.
- Delivers superior performance on titanium, using either high- or low-pressure coolant systems.
- Effective thermal management results in reduced cutting temperatures, improved lubricity, superior chip control, and longer tool life.
- Beyond BLAST for milling increases tool life by up to 300% compared with conventional coolant delivery systems.



beyond™ BLAST™

To learn more, *scan here.*
For instructions on how to scan,
please see page xxxiii.





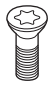

■ A4EM • End Mount

order number	catalog number	CSMS system size	seat size	L1S		F		D min		W min		CD	
				mm	in	mm	in	mm	in	mm	in	mm	in
right hand													
3503887	KM2520A4EMR0108M25	KM2520	1	24	.955	22	.866	40	1.57	1,50	.059	8	.32
3503885	KM2520A4EMR0208M25	KM2520	2	24	.945	22	.866	40	1.57	2,00	.079	8	.32
3503871	KM2520A4EMR0308M25	KM2520	3	24	.925	22	.866	40	1.57	3,00	.118	8	.32
3503869	KM2520A4EMR0408M25	KM2520	4	23	.906	22	.866	40	1.57	4,00	.157	8	.32
3503883	KM2520A4EMR2B08M25	KM2520	2B	24	.935	22	.866	40	1.57	2,50	.098	8	.32
2527482	KM3225A4EMR0310M30	KM3225	3	29	1.122	27	1.063	50	1.97	3,00	.118	10	.40
2527484	KM3225A4EMR0410M30	KM3225	4	28	1.102	27	1.063	50	1.97	4,00	.157	10	.40
2527488	KM3225A4EMR0510M30	KM3225	5	28	1.083	27	1.063	50	1.97	5,00	.197	10	.40
left hand													
3503886	KM2520A4EML0108M25	KM2520	1	24	.955	22	.866	40	1.57	1,50	.059	8	.32
3503884	KM2520A4EML0208M25	KM2520	2	24	.945	22	.866	40	1.57	2,00	.079	8	.32
3503870	KM2520A4EML0308M25	KM2520	3	24	.925	22	.866	40	1.57	3,00	.118	8	.32
3503868	KM2520A4EML0408M25	KM2520	4	23	.906	22	.866	40	1.57	4,00	.157	8	.32
3503872	KM2520A4EML2B08M25	KM2520	2B	24	.935	22	.866	40	1.57	2,50	.098	8	.32
2527483	KM3225A4EML0310M30	KM3225	3	29	1.122	27	1.063	50	1.97	3,00	.118	10	.40
2527485	KM3225A4EML0410M30	KM3225	4	28	1.102	27	1.063	50	1.97	4,00	.157	10	.40
2527489	KM3225A4EML0510M30	KM3225	5	28	1.083	27	1.063	50	1.97	5,00	.197	10	.40

(continued)

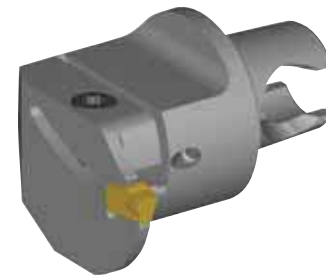
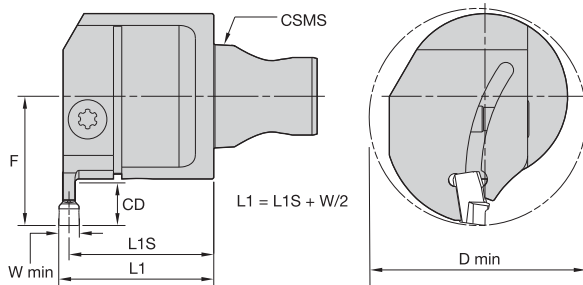
(A4EM • End Mount continued)

■ Spare Parts

catalog number	 clamp screw	 clamp screw
right hand		
KM2520A4EMR0108M25	MS1156	—
KM2520A4EMR0208M25	—	MS1160
KM2520A4EMR0308M25	—	MS1161
KM2520A4EMR0408M25	—	MS1161
KM2520A4EMR2B08M25	—	MS1160
KM3225A4EMR0310M30	MS2069	—
KM3225A4EMR0410M30	MS2069	—
KM3225A4EMR0510M30	MS2069	—
left hand		
KM2520A4EML0108M25	MS1156	—
KM2520A4EML0208M25	—	MS1160
KM2520A4EML0308M25	—	MS1161
KM2520A4EML0408M25	—	MS1161
KM2520A4EML2B08M25	—	MS1160
KM3225A4EML0310M30	MS2069	—
KM3225A4EML0410M30	MS2069	—
KM3225A4EML0510M30	MS2069	—

NOTE: W min supplied for reference only. See the Kennametal Innovations Master Catalog Cutting Tools 2013 for actual insert width.
 Always match seat size of insert to seat size of holder.
 Seat size 2B cutting units only accepts 2B inserts. Seat size 2 cutting units accepts 2 or 2B inserts.

KM Mini Cutting Units



■ A3ES • End Mount

order number	catalog number	CSMS system size	seat size	L1S		F		D min		W min		CD	
				mm	in	mm	in	mm	in	mm	in	mm	in
right hand													
3503893	KM2520A3ESR0308M25	KM2520	3	24	.925	22	.866	40,0	1.575	3,0	.118	8	.32
3503891	KM2520A3ESR0408M25	KM2520	4	23	.906	22	.866	40,0	1.575	4,0	.157	8	.32
3503889	KM2520A3ESR0510M25	KM2520	5	23	.886	24	.945	40,0	1.575	5,0	.197	10	.39
2527476	KM3225A3ESR0305M30	KM3225	3	29	1.122	22	.866	40,0	1.575	3,0	.118	5	.21
2527478	KM3225A3ESR0408M30	KM3225	4	28	1.102	25	.984	42,0	1.654	4,0	.157	8	.32
2527480	KM3225A3ESR0510M30	KM3225	5	28	1.083	27	1.063	45,0	1.772	5,0	.197	10	.40
left hand													
3503892	KM2520A3ESL0308M25	KM2520	3	24	.925	22	.866	40,0	1.575	3,0	.118	8	.32
3503890	KM2520A3ESL0408M25	KM2520	4	23	.906	22	.866	40,0	1.575	4,0	.157	8	.32
3503888	KM2520A3ESL0510M25	KM2520	5	23	.886	24	.945	40,0	1.575	5,0	.197	10	.39
2527477	KM3225A3ESL0305M30	KM3225	3	29	1.122	22	.866	40,0	1.575	3,0	.118	5	.21
2527479	KM3225A3ESL0408M30	KM3225	4	28	1.102	25	.984	42,0	1.654	4,0	.157	8	.32
2527481	KM3225A3ESL0510M30	KM3225	5	28	1.083	27	1.063	45,0	1.772	5,0	.197	10	.40

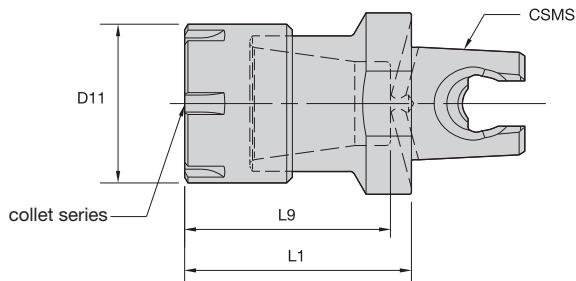
■ Spare Parts



catalog number	clamp screw
right hand	
KM2520A3ESR0308M25	MS2064
KM2520A3ESR0408M25	MS2064
KM2520A3ESR0510M25	MS1162
KM3225A3ESR0305M30	MS2064
KM3225A3ESR0408M30	MS2064
KM3225A3ESR0510M30	MS2062
left hand	
KM2520A3ESL0308M25	MS2064
KM2520A3ESL0408M25	MS2064
KM2520A3ESL0510M25	MS1162
KM3225A3ESL0305M30	MS2064
KM3225A3ESL0408M30	MS2064
KM3225A3ESL0510M30	MS2062

NOTE: W min supplied for reference only. See the Kennametal Innovations Master Catalog Cutting Tools 2013 for actual insert width. Always match seat size of insert to seat size of holder.

- Grip (2:1 advantage).



KM Mini Shank Tools



ER Collet Series	Collet Capacity			
	mm		inch	
	min	max	min	max
ER16	0,5	10,0	.02	.41
ER20	0,5	13	.02	.50
ER25	1,0	16,0	.04	.63

■ ER

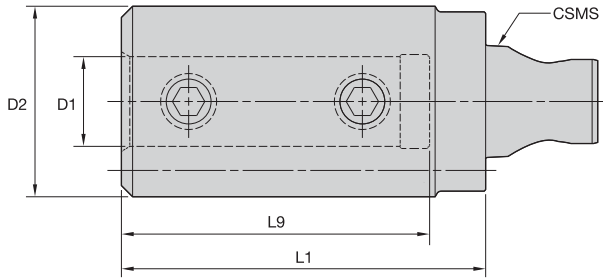
order number	catalog number	CST collet series	CSMS system size	D11		L1		L9		counterbore collet torque (Nm)	straight collet torque (Nm)
				mm	in	mm	in	mm	in		
2527514	KM3225ER1635	ER16	KM3225	22	.866	35	1.378	33,2	1.307	24,0	56,0
2527516	KM3225ER2040	ER20	KM3225	28	1.102	40	1.575	36,3	1.429	28,0	80,0
2527515	KM3225ER2545	ER25	KM3225	42	1.654	45	1.772	38,8	1.528	104,0	104,0

■ Spare Parts



catalog number	locknut	locknut wrench	locknut wrench	Nm	ft. lbs.
KM3225ER1635	LER16M	ER16WEM	—	24	17
KM3225ER2040	LER20M	ER20WEM	—	28	20
KM3225ER2545	LNER25M	—	ER25WEM	104	77

NOTE: Collet must be loaded into locknut first. Before loading into the chuck body, insert the cutting tool, then tighten to the recommended tightening torque.
Collet chuck technical section, see page M98.
Supplied with locknut.
Locknut wrench must be ordered separately.
Interchangeable coolant-style locknuts and coolant disks are available and must be ordered separately; see pages L16–L17.
ER standard straight-bore collets, see page J50.
ER tap collets, see pages J58–J59.
ER TCT tension-only tap collets, see page J60.



■ BA • Boring Bar Adapter • Metric



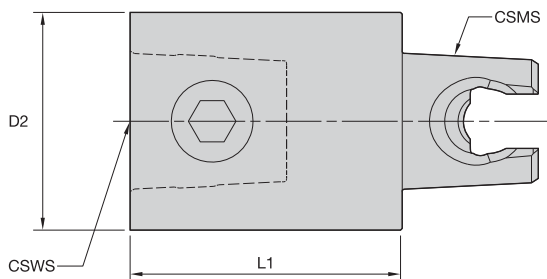
order number	catalog number	CSMS system size	D1	D2	L1	L9	clamp screw	clamp screw	wrench size clamp screw	Nm
2527505	KM3225BA0645M	KM3225	6	32	45	36	MS734	—	2,5mm	4
3507964	KM2520BA0645M	KM2520	6	25	45	36	—	MS1272	2,5mm	4
3507963	KM2520BA0845M	KM2520	8	25	45	36	—	MS1272	2,5mm	4
2527506	KM3225BA0845M	KM3225	8	32	45	36	MS734	—	2,5mm	4
3505972	KM2520BA1055M	KM2520	10	30	55	48	—	MS-1879	4mm	15
2527507	KM3225BA1055M	KM3225	10	32	55	48	MS1205	MS-1879	4mm	15
2527508	KM3225BA1260M	KM3225	12	32	60	52	MS1205	MS-1879	4mm	15
3505971	KM2520BA1260M	KM2520	12	32	60	52	—	MS-1879	4mm	15
2527509	KM3225BA1665M	KM3225	16	34	65	55	MS1205	—	5mm	25
2527510	KM3225BA2070M	KM3225	20	37	70	58	MS1205	—	5mm	25

■ BA • Boring Bar Adapter • Inch



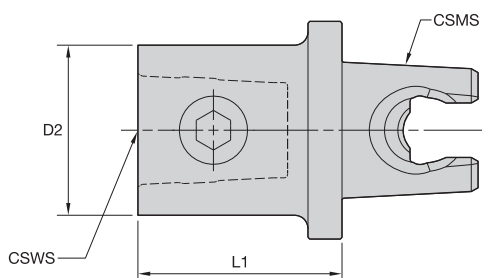
order number	catalog number	CSMS system size	D1	D2	L1	L9	clamp screw	wrench size clamp screw	ft. lbs.
3507967	KM2520BA04217	KM2520	1/4	.98	1.378	1.06	—	3/32	2
3507966	KM2520BA06217	KM2520	3/8	1.10	2.165	1.89	S841PKG	1/8	5
3507965	KM2520BA08236	KM2520	1/2	1.26	2.362	2.05	S850	5/32	11
2527490	KM3225BA06217	KM3225	3/8	1.26	2.165	1.89	MS1205	1/8	5
2527491	KM3225BA08236	KM3225	1/2	1.26	2.362	2.05	S850	5/32	11
2527492	KM3225BA10256	KM3225	5/8	1.34	2.559	2.13	S861	3/16	15
2527503	KM3225BA12276	KM3225	3/4	1.46	2.756	2.28	S861	3/16	15

NOTE: Do not overtighten clamp screw; use torque recommendations above.
Supplied with clamp screw.
Clamp screw wrench not included.


S • KM Extension

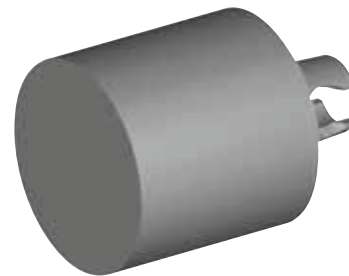
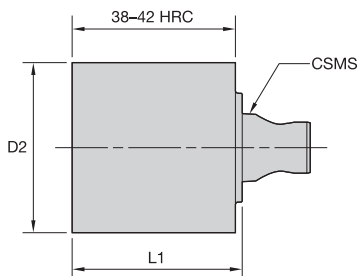

order number	catalog number	CSMS system size	CSWS system size	D2		L1		wrench size actuation screw	Nm	ft. lbs.	spare parts package
				mm	in	mm	in				
3483042	KM2520S2525	KM2520	KM2520	25	.98	25	.984	5mm	19-22	14-16	KM2520NRPKG
3483043	KM2520S2550	KM2520	KM2520	25	.98	50	1.969	5mm	19-22	14-16	KM2520NRPKG
2541964	KM3225S3240	KM3225	KM3225	32	1.26	40	1.575	6mm	34-40	25-30	KM3225NRPKG
2541965	KM3225S3260	KM3225	KM3225	32	1.26	60	2.362	6mm	34-40	25-30	KM3225NRPKG

NOTE: For torque wrench, see pages L52–L53.


S • KM Reducer

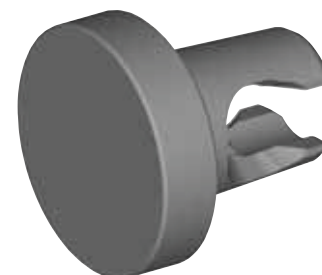
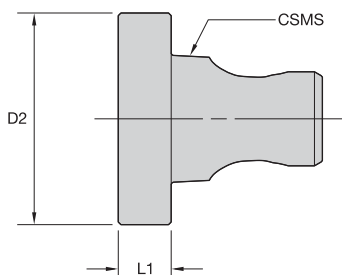

order number	catalog number	CSMS system size	CSWS system size	D2		L1		wrench size actuation screw	Nm	ft. lbs.	spare parts package
				mm	in	mm	in				
3483044	KM2520S201630	KM2520	KM2016	20	.79	30	1.181	27 IP	10-11	7-8	KM16NRPKG
3397325	KM3225S161230	KM3225	KM1612	16	.63	30	1.181	25 IP	7-8	5-6	KM12NRPKG
3397324	KM3225S201630	KM3225	KM2016	20	.79	30	1.181	27 IP	10-11	7-8	KM16NRPKG
3397323	KM3225S252030	KM3225	KM2520	25	.98	30	1.181	5mm	19-22	14-16	KM2520NRPKG

NOTE: For torque wrench, see pages L52–L53.



■ **BN • Blank**

order number	catalog number	CSMS system size	D2		L1		hardness range
			mm	in	mm	in	
3518531	KM20BN4040	KM20	40	1.575	40	1.575	38 - 42 RW C
3503896	KM2520BN5050	KM2520	50	1.969	50	1.969	38 - 42 RW C
2427296	KM25BN5050	KM25	50	1.969	50	1.969	38 - 42 RW C
2656551	KM3225BN5050	KM3225	50	1.969	50	1.969	38 - 42 RW C

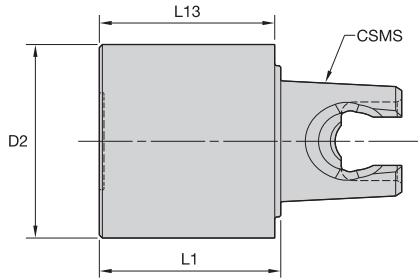


■ **P • Plug**

order number	catalog number	CSMS system size	D2		L1	
			mm	in	mm	in
3662590	KM20P	KM20	20	.787	5	.197
3662591	KM2520P	KM2520	25	.984	5	.197
2427295	KM25P	KM25	25	.984	5	.197
2906995	KM3225P	KM3225	32	1.260	5	.197

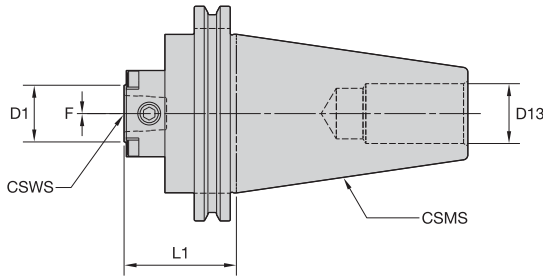


KM Mini Shank Tools



■ GB • Gage Bar

order number	catalog number	CSMS system size	D2		L1		L13	
			mm	in	mm	in	mm	in
3518635	KM20GB2525	KM20	25	.984	25	.984	25	.984
2427297	KM25GB3230	KM25	32	1.260	30	1.181	29	1.142

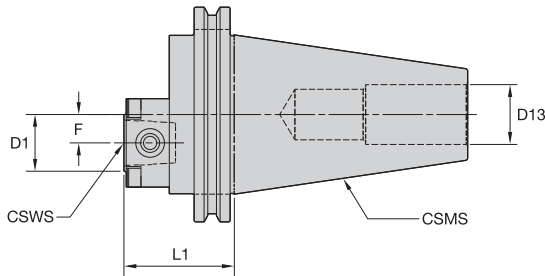


■ **TRA • Centered**



order number	catalog number	CSMS system size	CSWS system size	D1		D13		L1		F		KM spare parts package	wrench size		
				mm	in	mm	in	mm	in	mm	in		actuation screw	Nm	ft. lbs.
3449331	CV50KM3225TRA	CV50	KM3225	32	1.260	26	1.039	50	1.969	0,0	.000	KM3225NRPKG	6mm	34-40	25-30
3503898	DV40KM2520TRA	DV40	KM2520	25	.984	18	.693	50	1.969	0,0	.000	KM2520NRPKG	5mm	19-22	14-16
3449332	DV40KM3225TRA	DV40	KM3225	32	1.260	18	.693	50	1.969	0,0	.000	KM3225NRPKG	6mm	34-40	25-30

NOTE: These are only intended to be used in a presetter fixture.



■ **ECTRA • Offset**

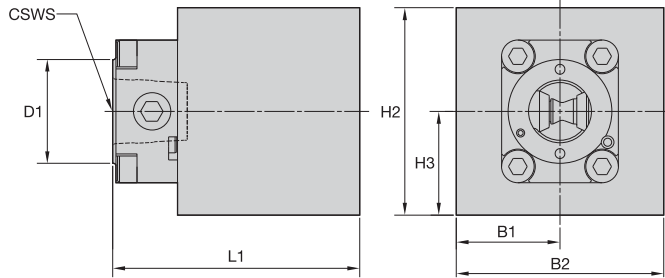


order number	catalog number	CSMS system size	CSWS system size	D1		D13		L1		F		KM spare parts package	wrench size		
				mm	in	mm	in	mm	in	mm	in		actuation screw	Nm	ft. lbs.
3518634	CV50KM20ECTRA	CV50	KM20	20	.787	26	1.014	50	1.969	9,5	.375	KM2520NRPKG	5mm	19-22	14-16
2427294	CV50KM25ECTRA	CV50	KM25	25	.984	26	1.039	50	1.969	12,5	.492	KM25NRPKG	6mm	34-40	25-30
3518633	DV40KM20ECTRA	DV40	KM20	20	.787	19	.728	50	1.969	9,5	.375	KM2520NRPKG	5mm	19-22	14-16

NOTE: These are only intended to be used in a presetter fixture.



KM Mini Shank Tools



■ TB • Tumble Block



order number	catalog number	CSWS system size	D1		L1		H2		H3		B2		B1		spare parts package	wrench size actuation screw		
			mm	in	mm	in	mm	in	mm	in	mm	in	mm	in		mm	Nm	ft. lbs.
3503897	KM2520TB	KM2520	25	.984	76,20	3.000	64	2.520	32	1.260	64	2.520	32,00	1.260	KM2520NRPKG	5mm	19-22	14-16
3449353	KM3225TB	KM3225	32	1.260	76,20	3.000	64	2.520	32	1.260	64	2.520	32,00	1.260	KM3225NRPKG	6mm	34-40	25-30